

Big Ben



It is highly recommended that you visit www.fascinations.com/iconx360/lcx018 to see the completed model before assembling your own



FASCINATIONS, INC.
Seattle, Washington, USA

Go to www.fascinations.com/iconx360/lcx018 to see the zoomable PDF version of this instruction sheet

ICX018

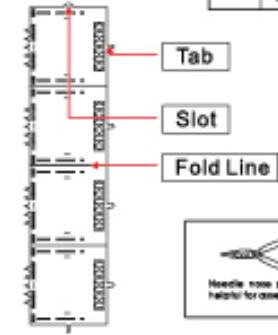
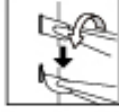


TO CREATE THE BEST CONNECTIONS

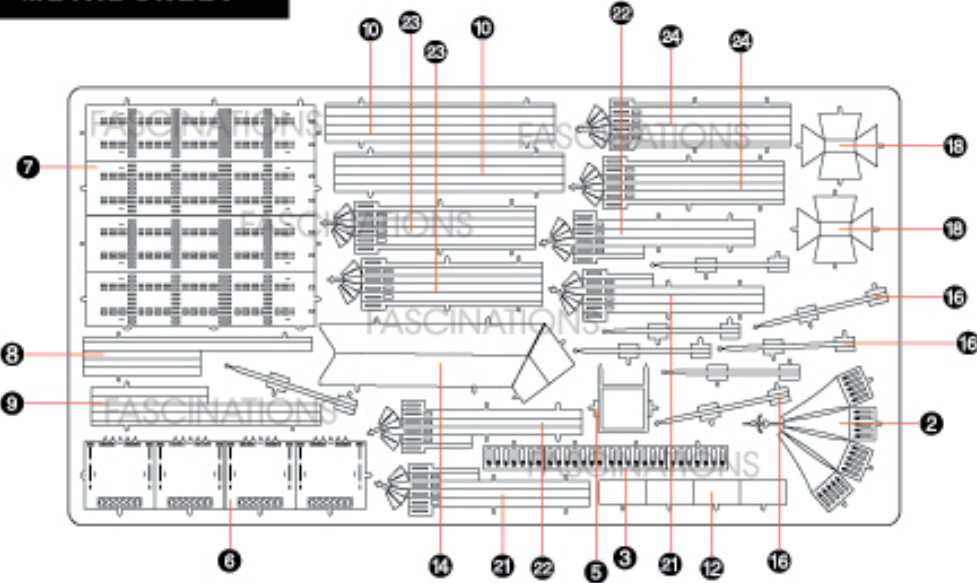
● Insert tab into slot and bend 90 degrees



▲ Insert tab into slot and twist 90 degrees

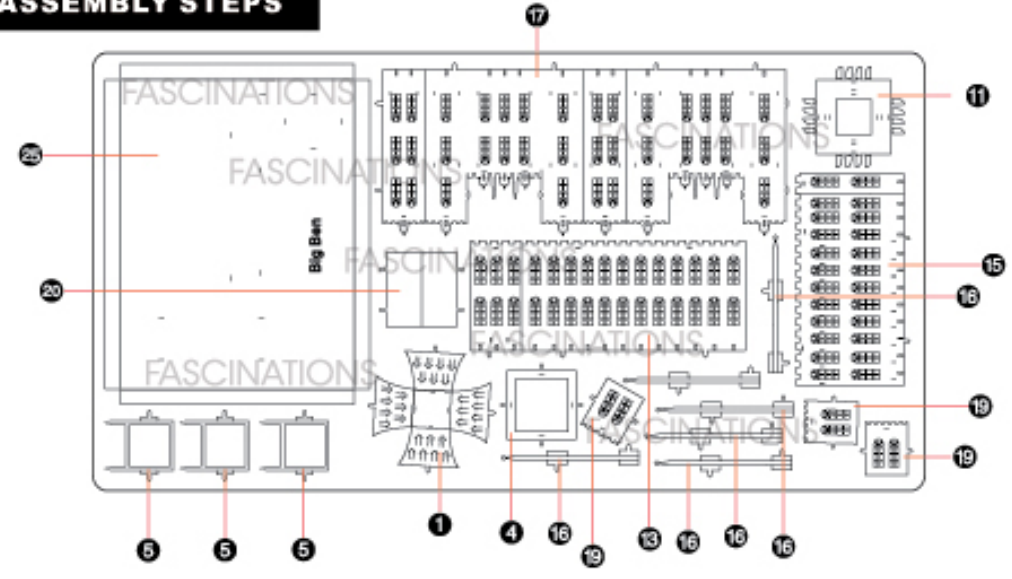


METAL SHEET



! In order to avoid possible injury from sharp edges, please carefully discard the metal sheet after parts have been removed.

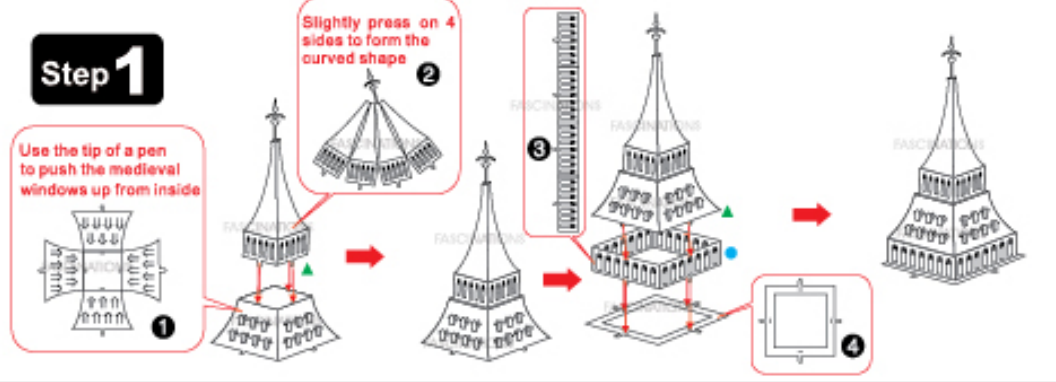
ASSEMBLY STEPS



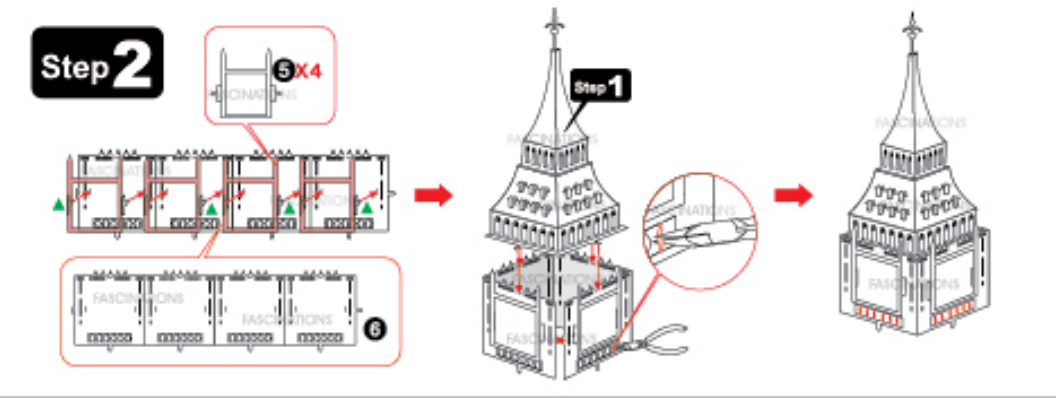
Step 1

Use the tip of a pen to push the medieval windows up from inside

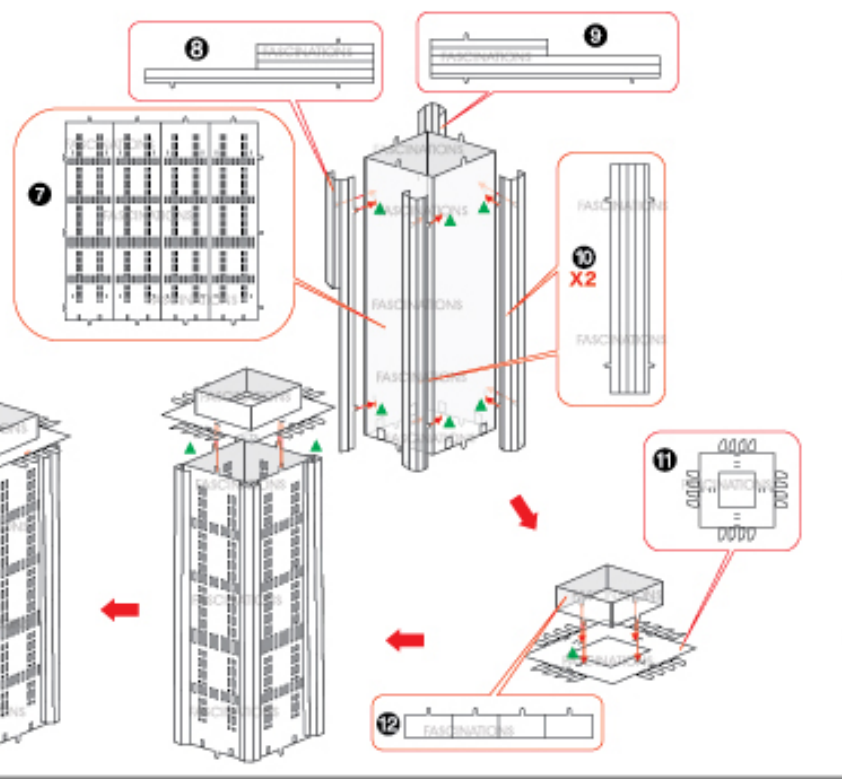
Slightly press on 4 sides to form the curved shape



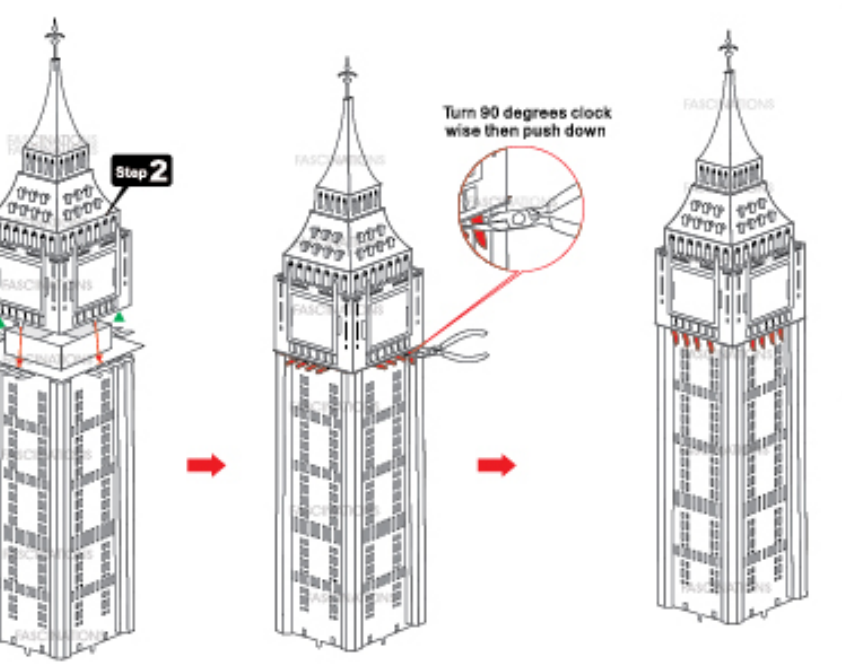
Step 2



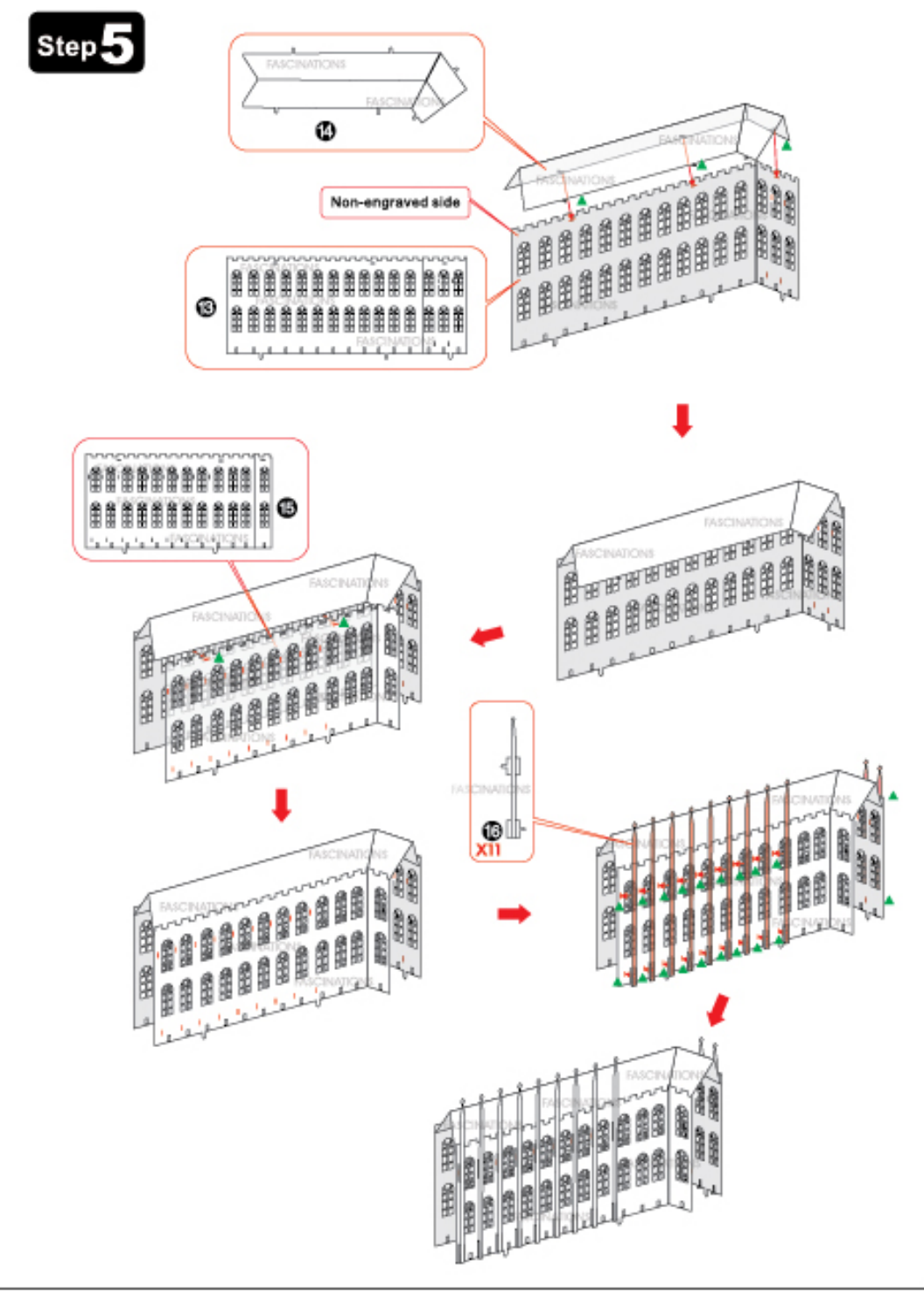
Step 3



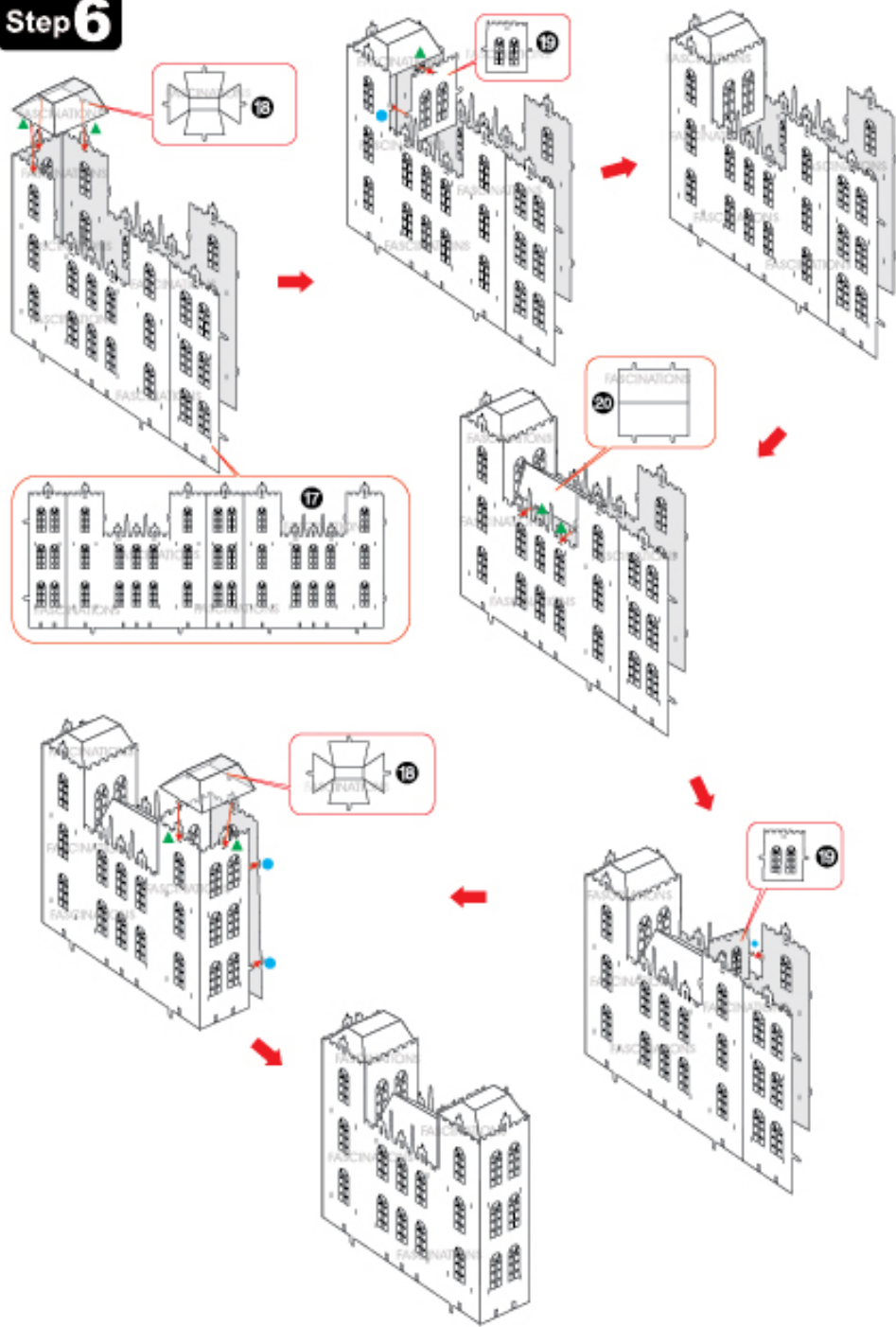
Step 4



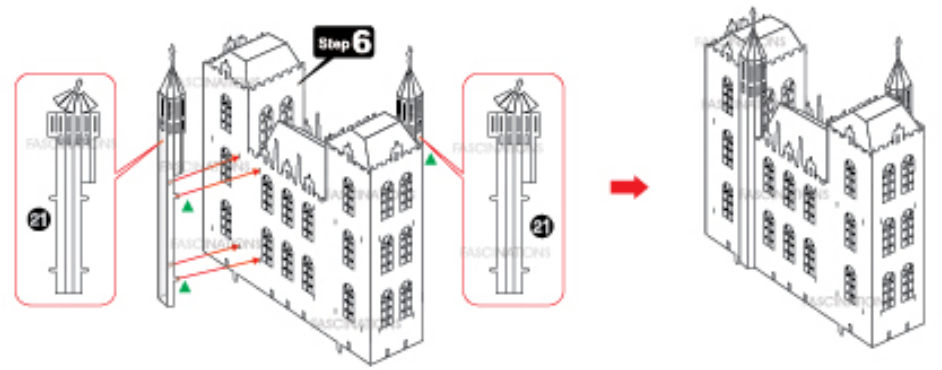
Step 5



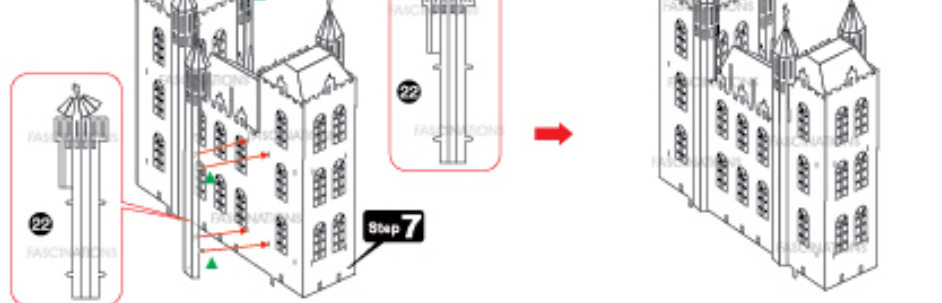
Step 6



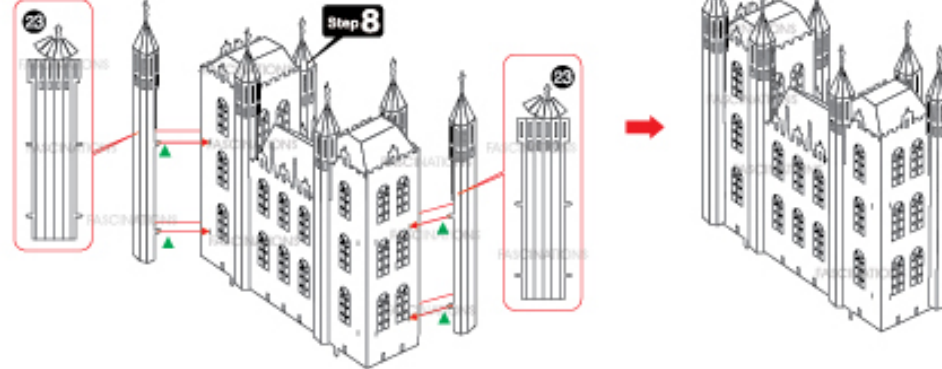
Step 7



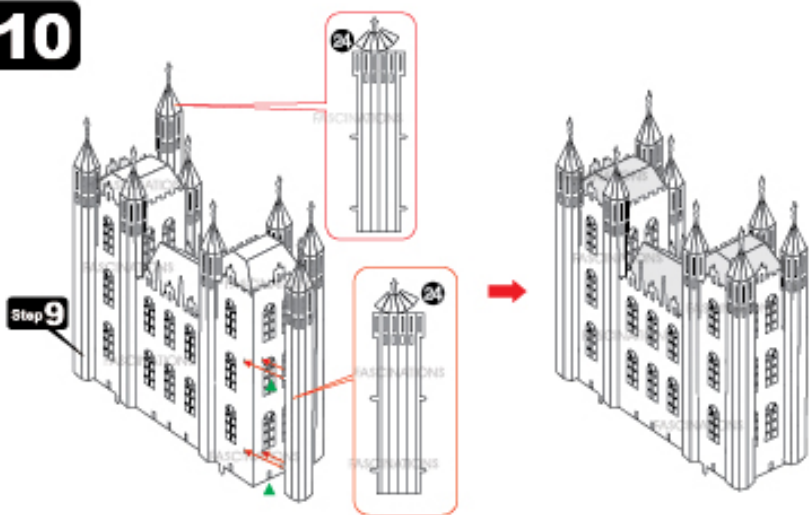
Step 8



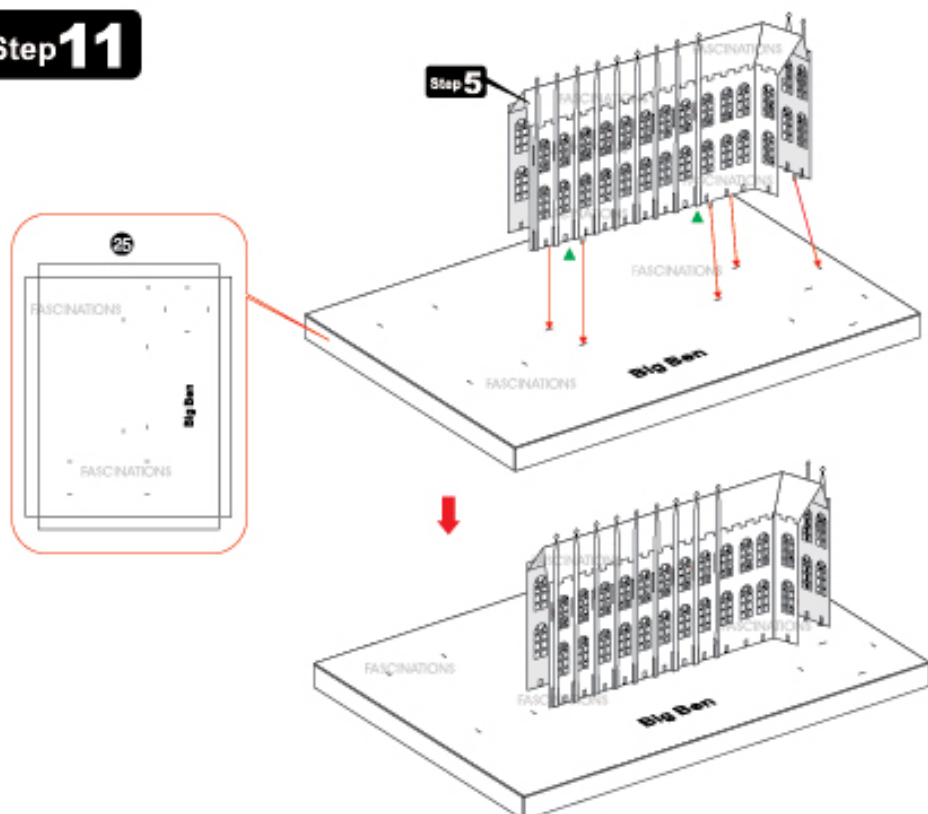
Step 9



Step 10



Step 11



Step 12

