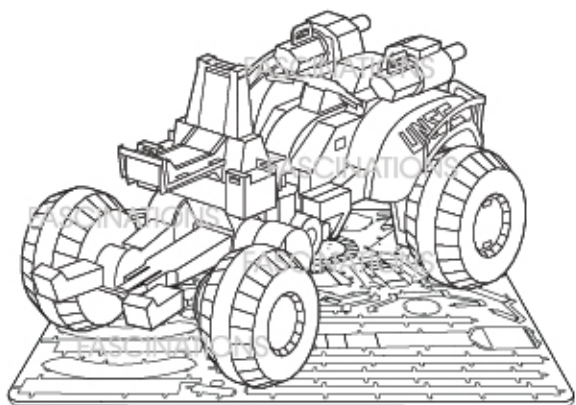


METAL EARTH[®]

3D METAL MODEL KITS



It is highly recommended that you visit www.fascinations.com/metalearth360/mms296 to see the completed model before assembling your own



mms296

To create the best connections

- Insert tab and bend 90 degrees for most visible areas
- Insert tab and twist 90 degrees is best in some areas to ensure a tight connection

Legends:

- Engraved side
- Non-engraved side
- Attention point

Needle nose pliers are helpful for assembly

Insertion tabs are inserted and then folded

Insertion holes

Fold lines can be seen as shown here

Pull and Screw metal tab 90° to tighten

Metal sheets



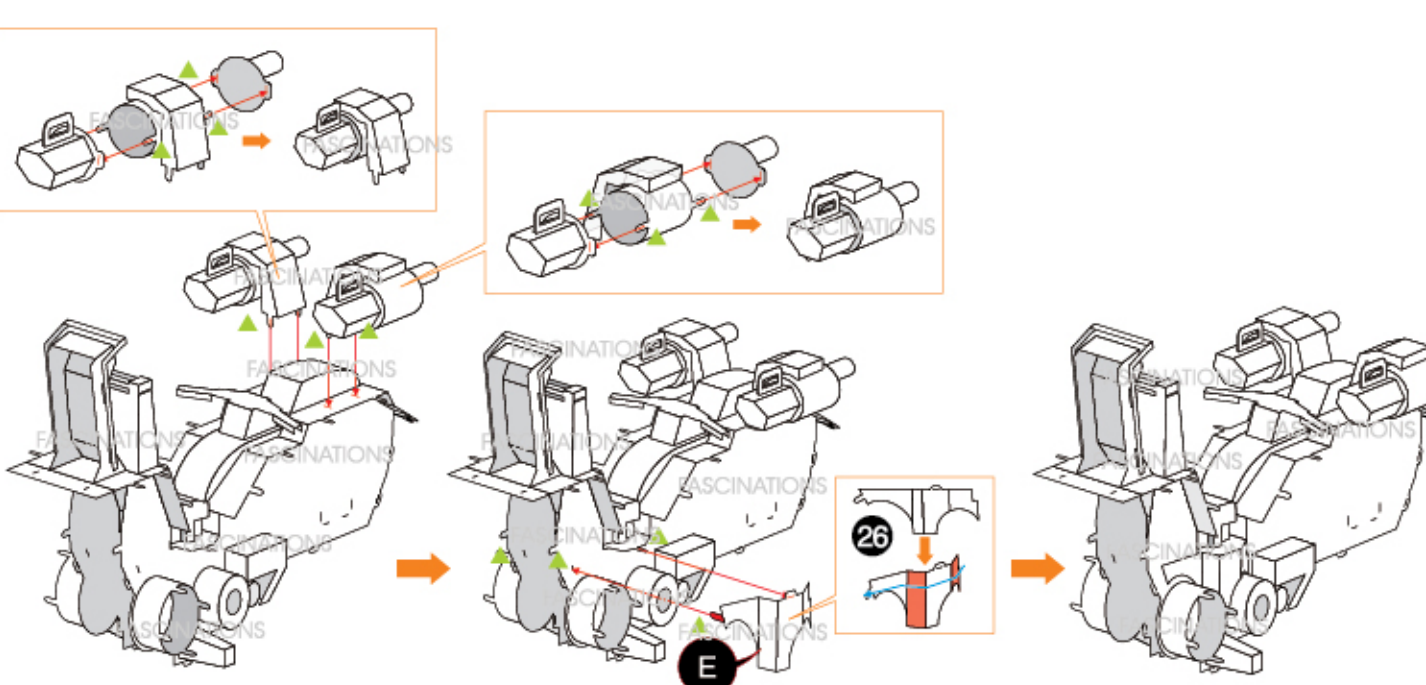
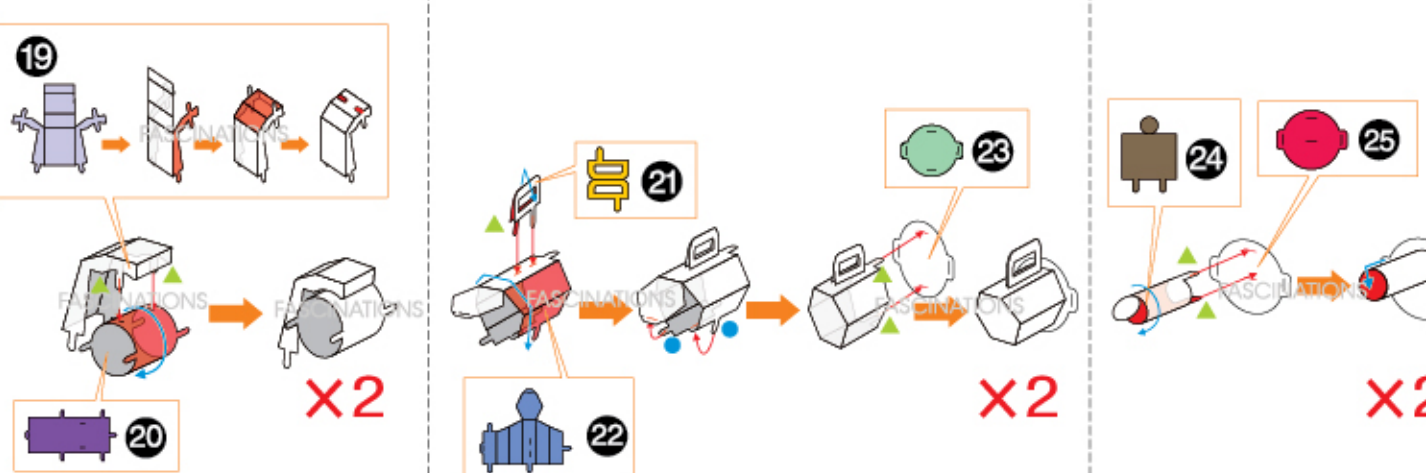
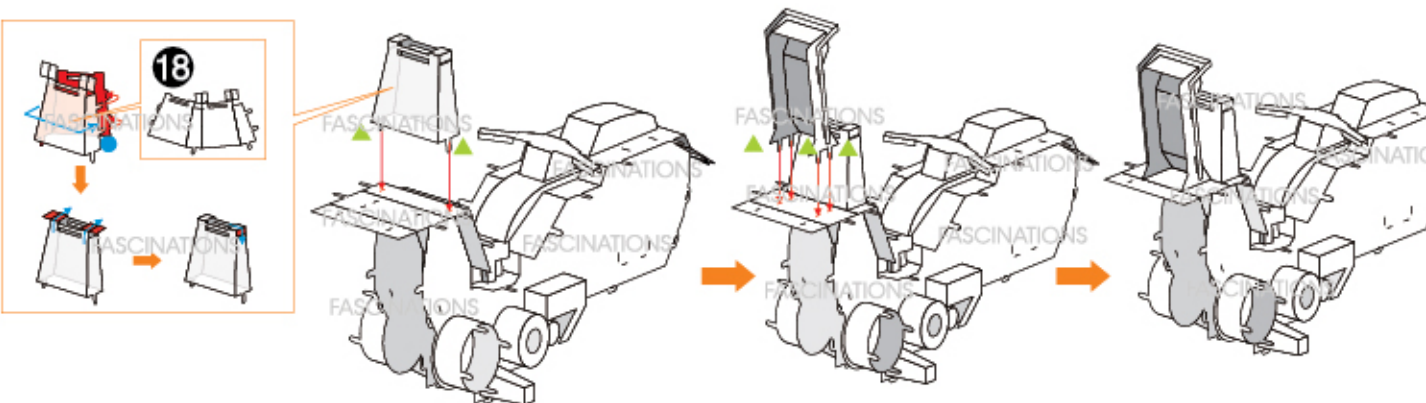
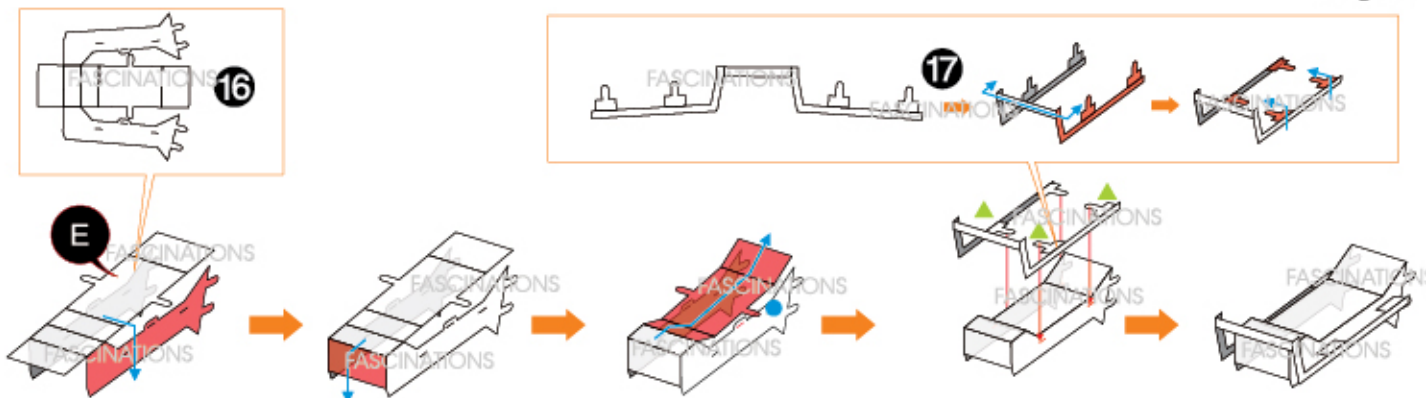
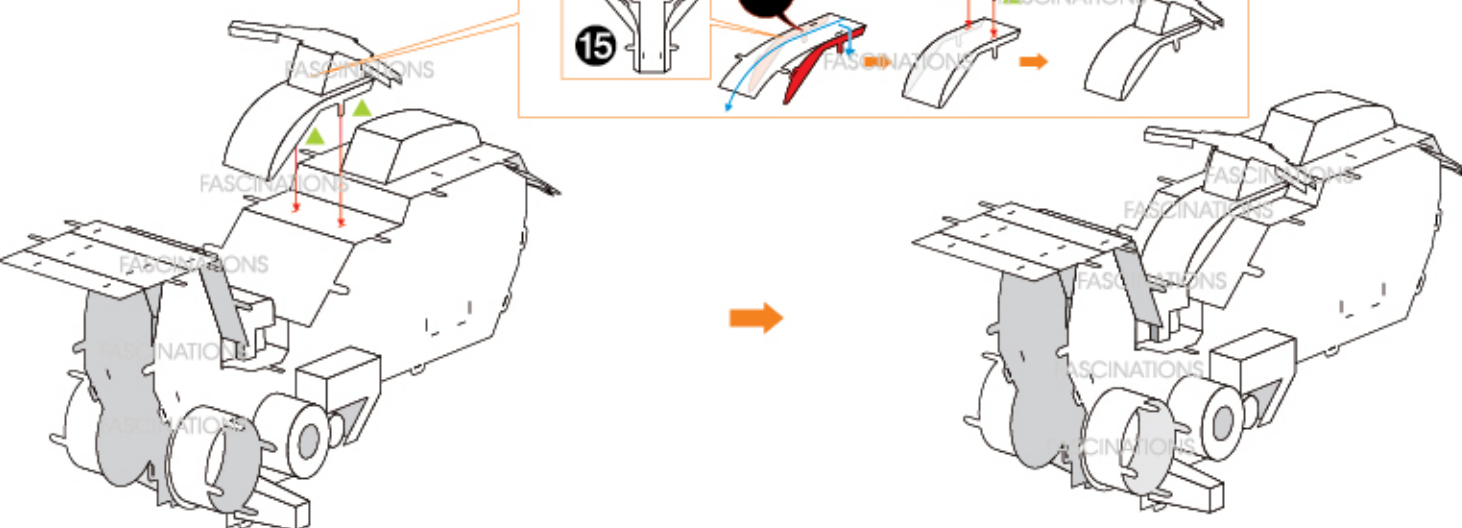
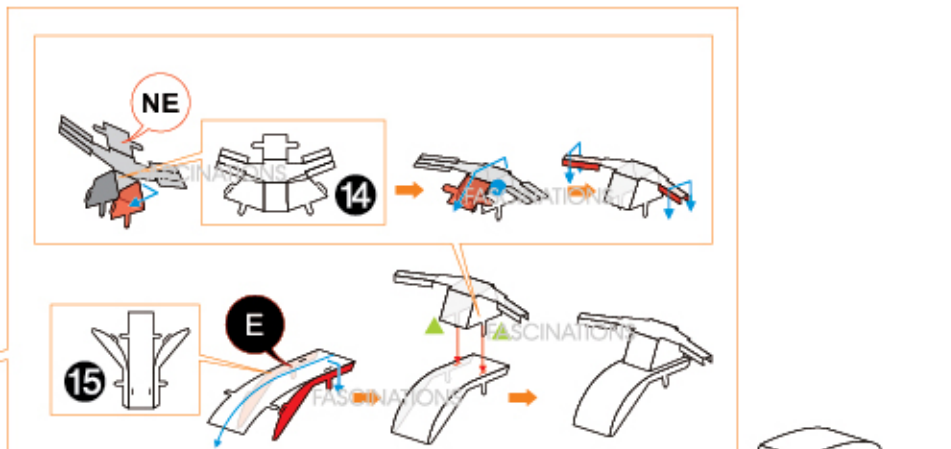
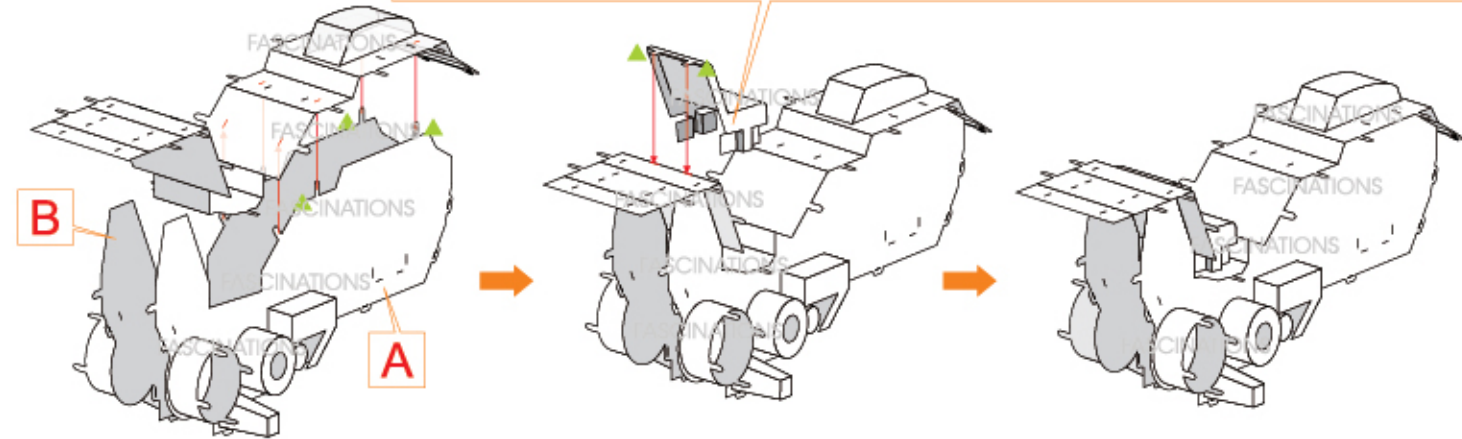
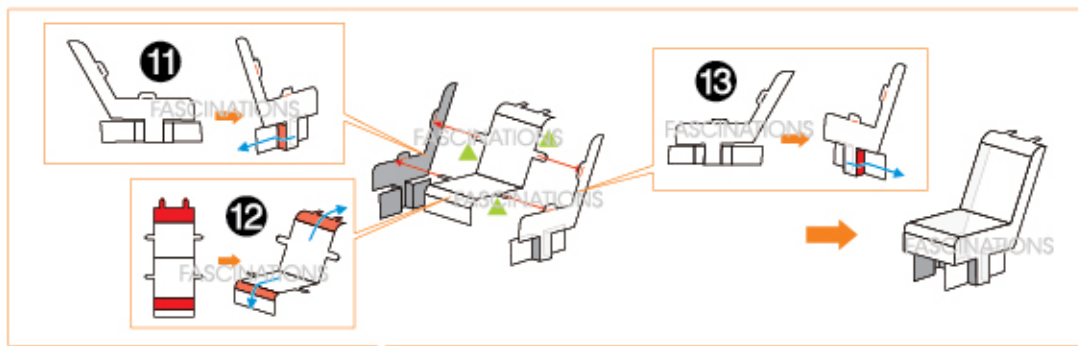
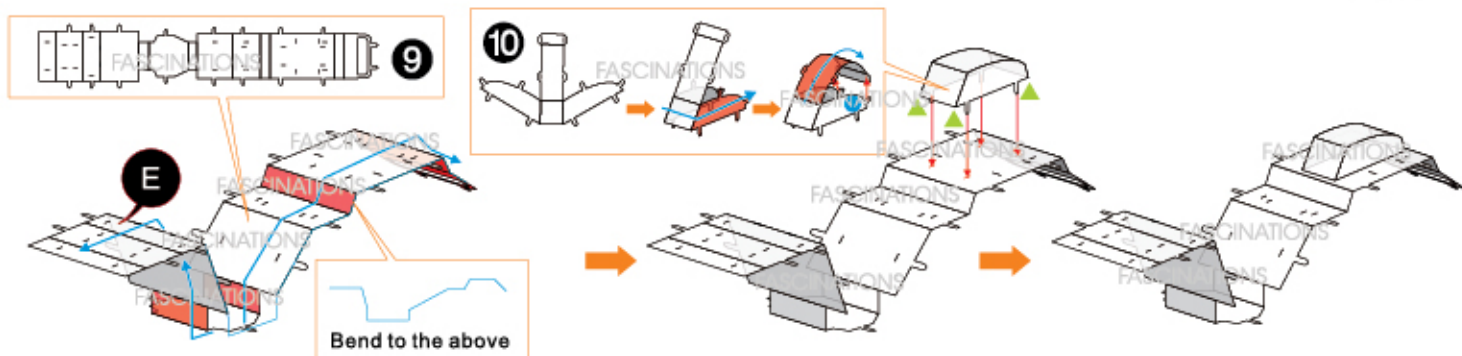
In order to avoid possible injury from sharp edges, please carefully discard the metal sheet after parts have been removed

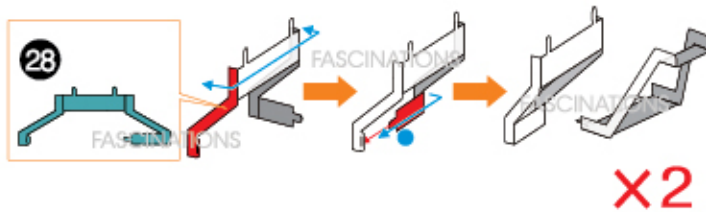
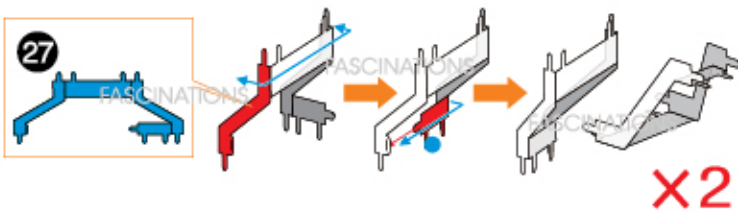
Assembly Flow Chart

The flow chart illustrates the assembly process for two main components, A and B. It consists of eight numbered steps:

- Step 1: Preparing sheet 1 (E).
- Step 2: Attaching part 2 (NE).
- Step 3: Attaching part 3 (NE).
- Step 4: Attaching part 4 (NE).
- Step 5: Attaching part 5 (NE).
- Step 6: Attaching part 6 (NE).
- Step 7: Attaching sheet 7 (E).
- Step 8: Attaching part 8 (NE).

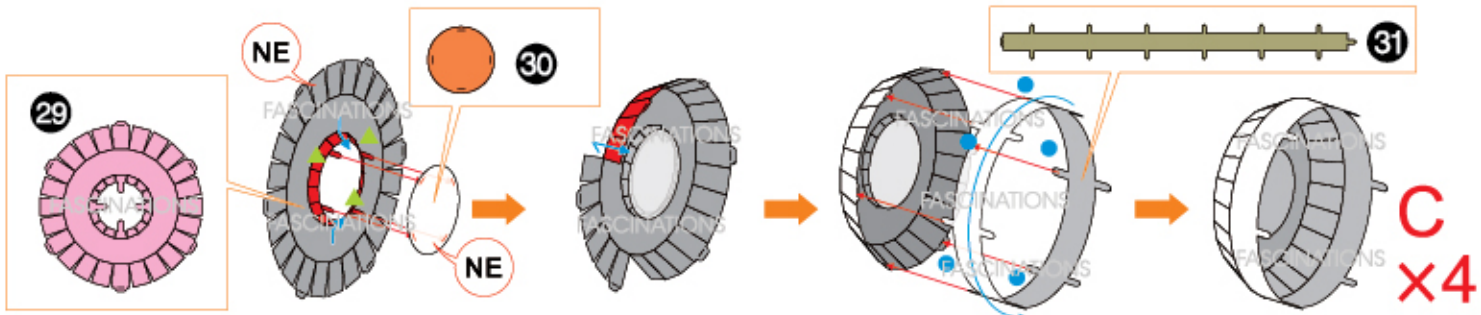
Component A is assembled using steps 1 through 6. Component B is assembled using steps 5 through 8.



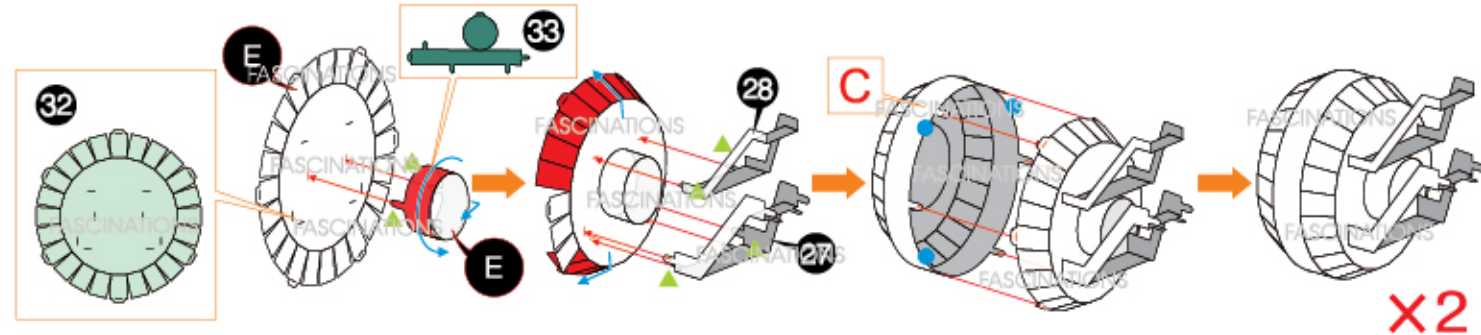


X2

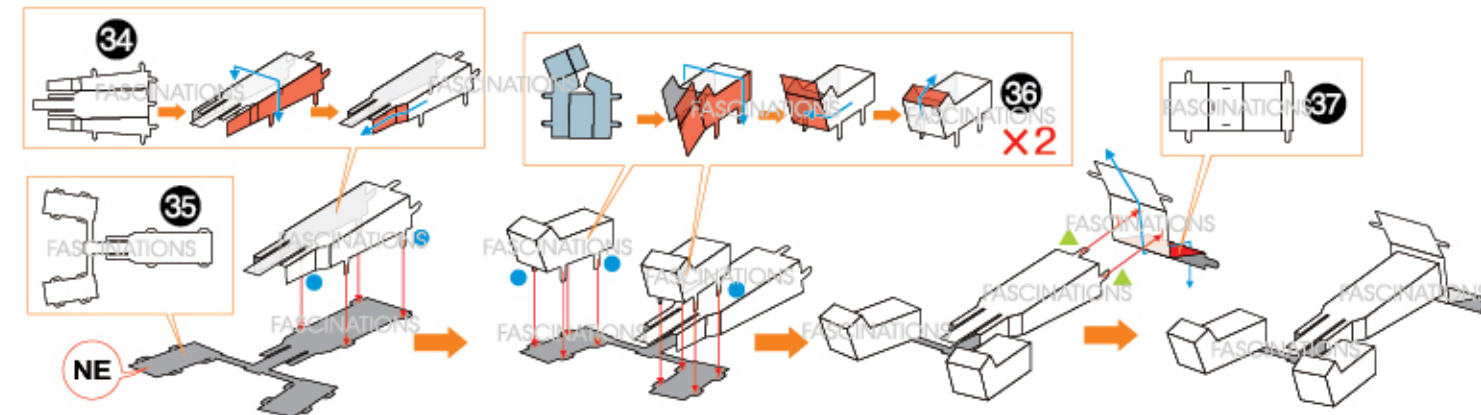
X2



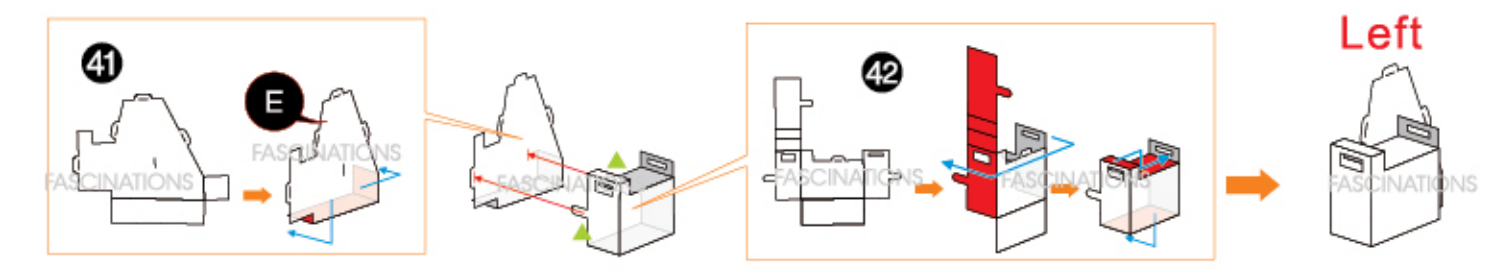
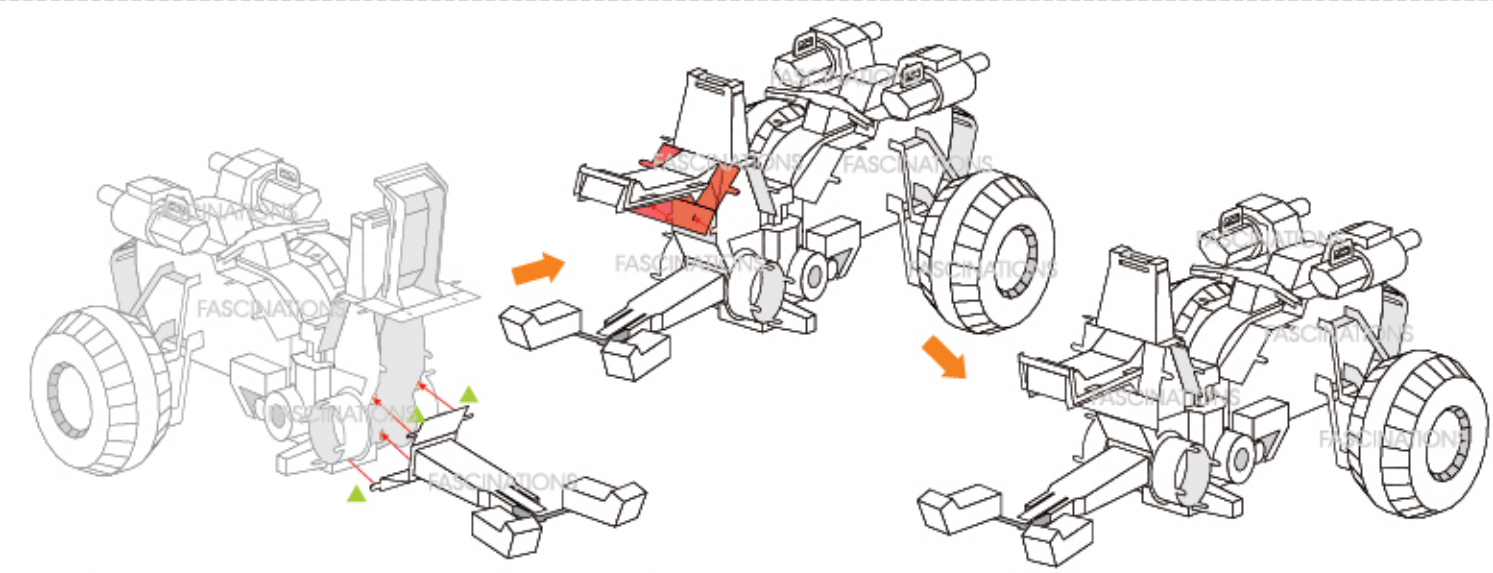
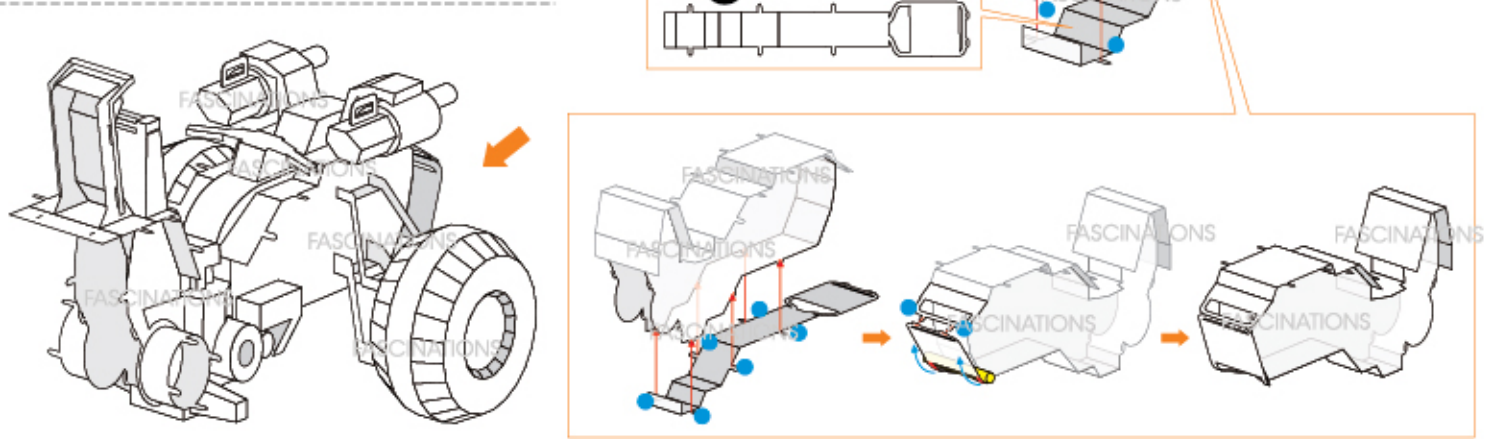
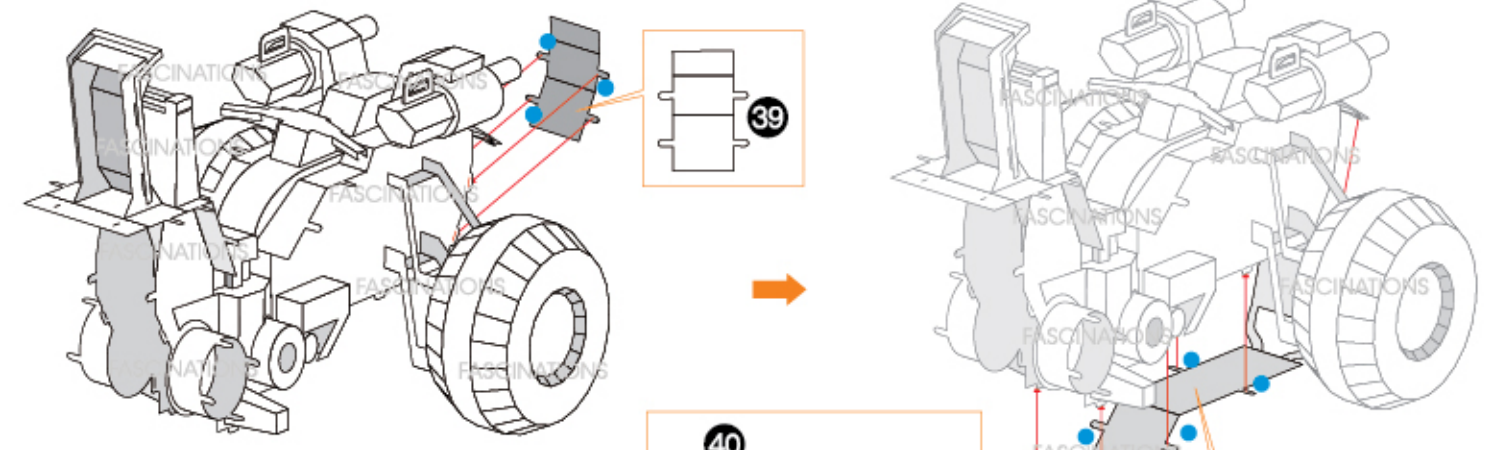
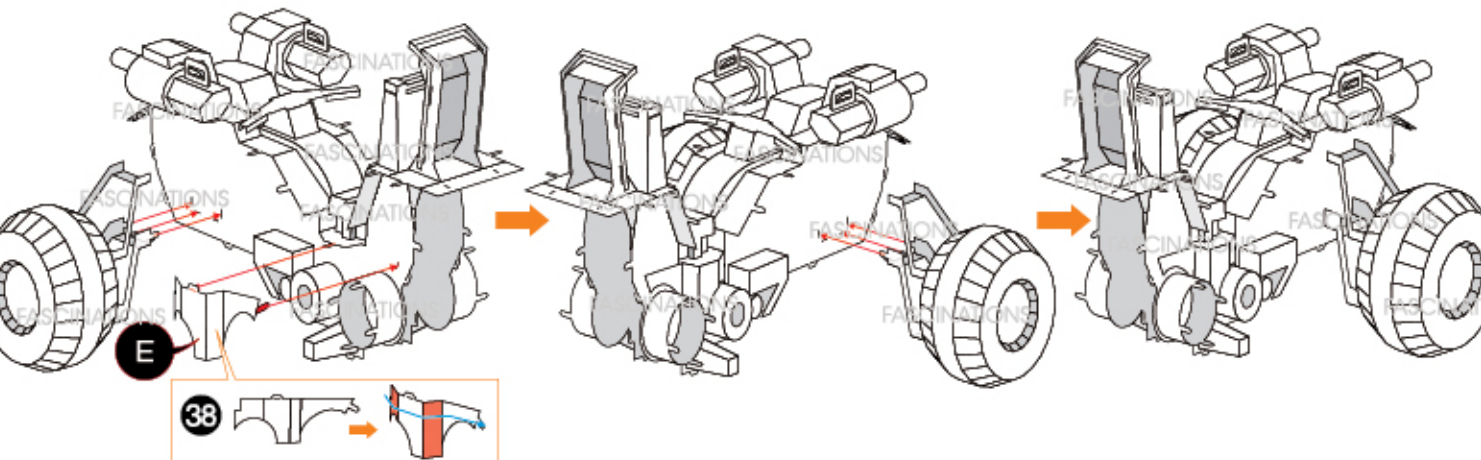
C X4



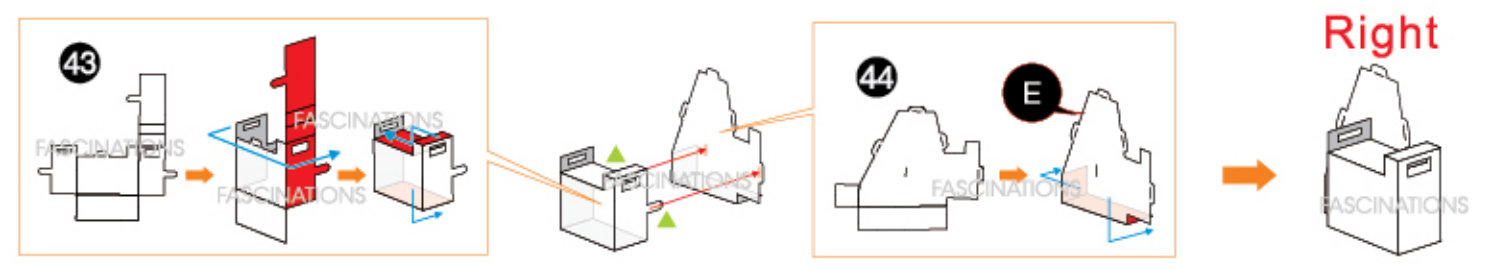
X2



X2



Left



Right

