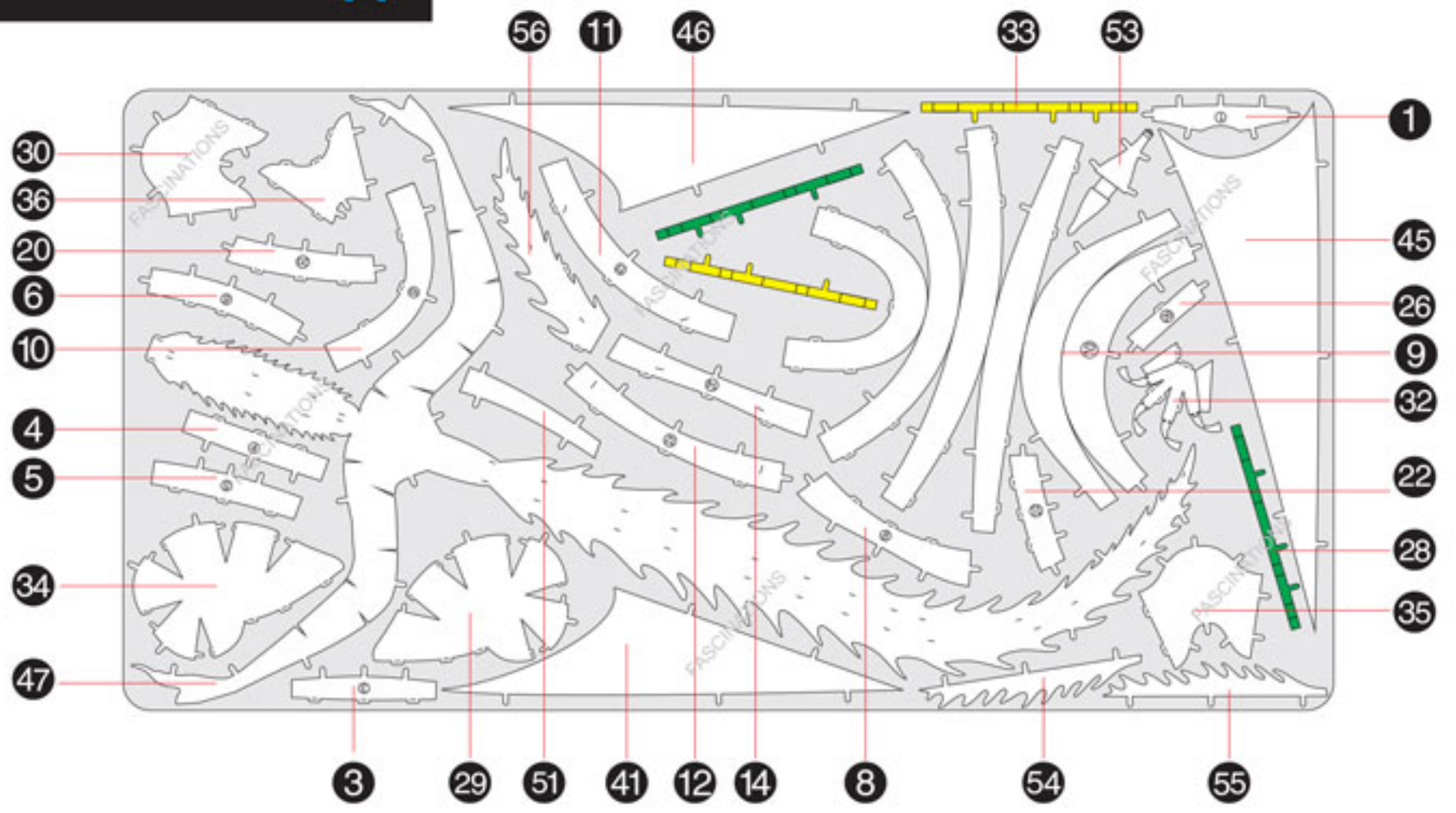


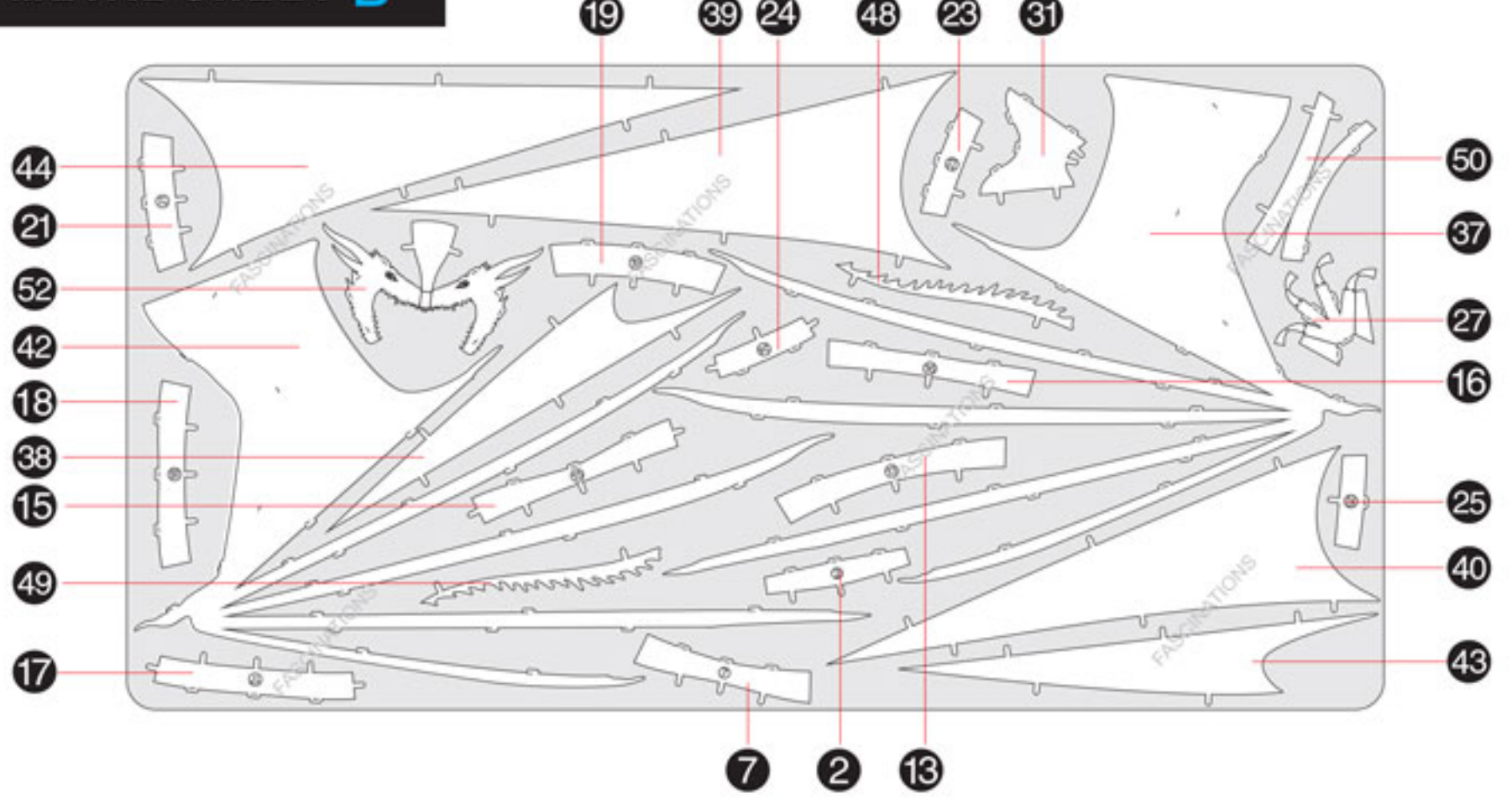


It is highly recommended that you visit [www.metalearth.com/360/icx124](http://www.metalearth.com/360/icx124) to see the completed model before assembling your own

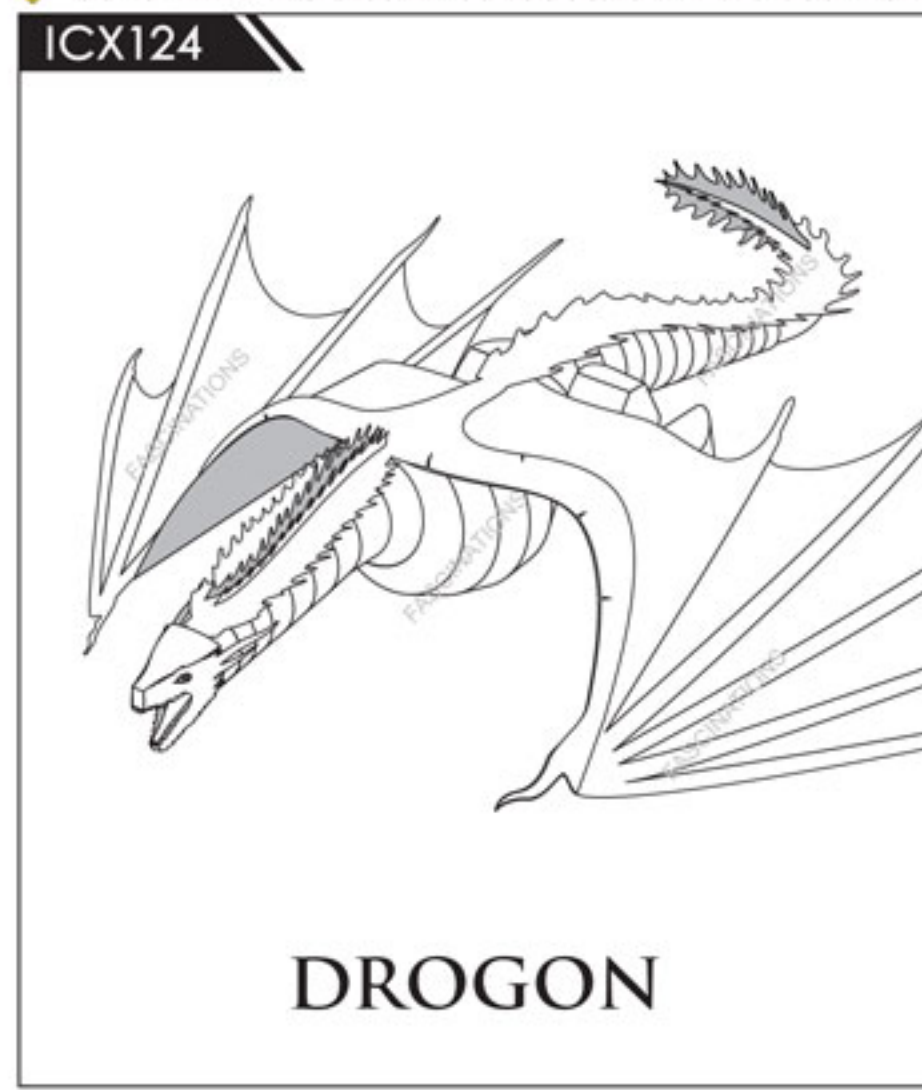
## METAL SHEET A



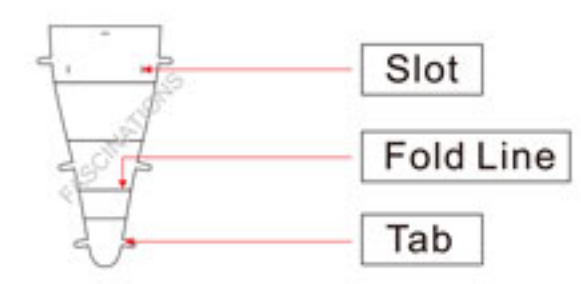
## METAL SHEET B



In order to avoid possible injury from sharp edges, please carefully discard the metal sheets after parts have been removed.



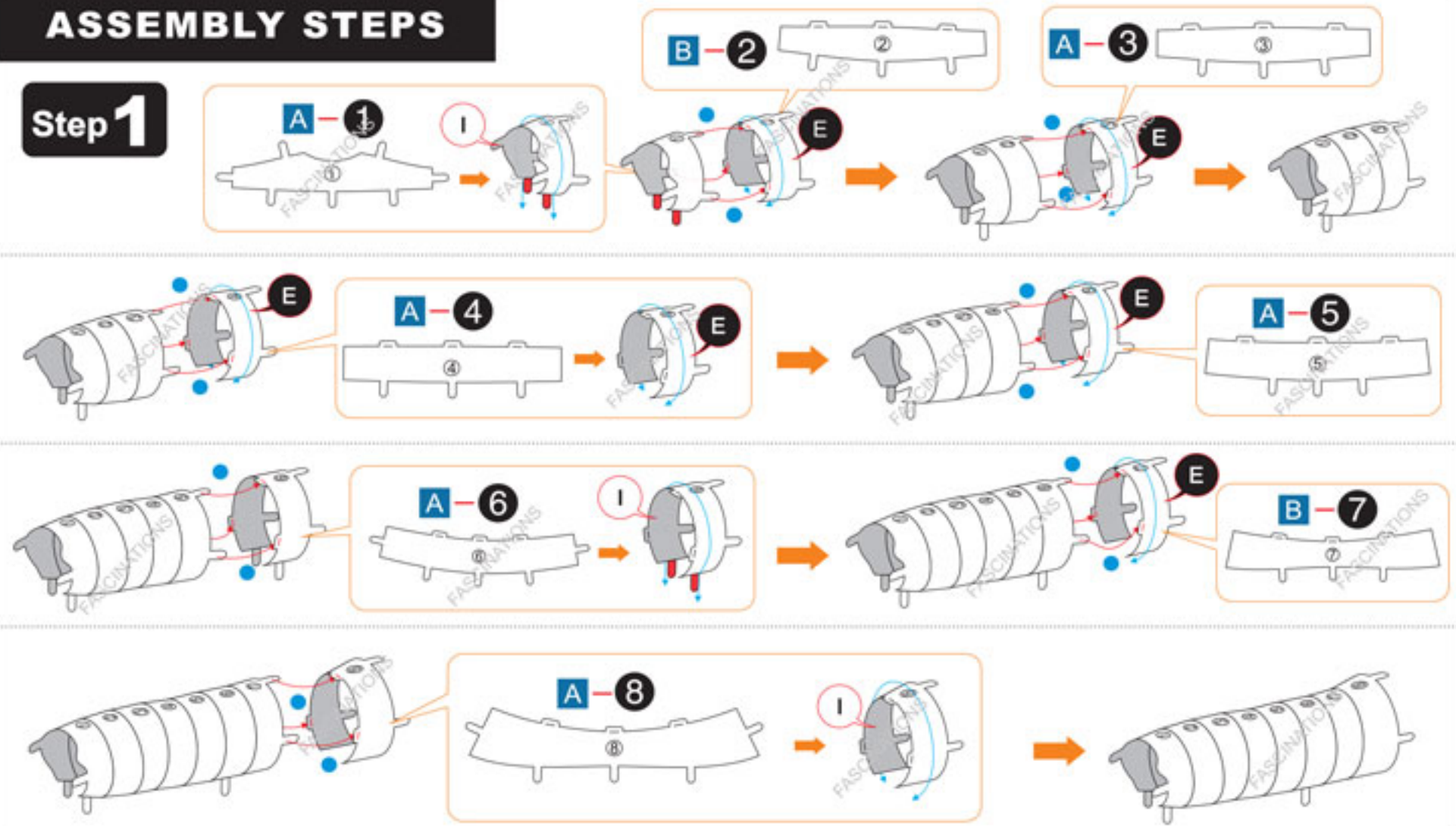
## TO CREATE THE BEST CONNECTIONS



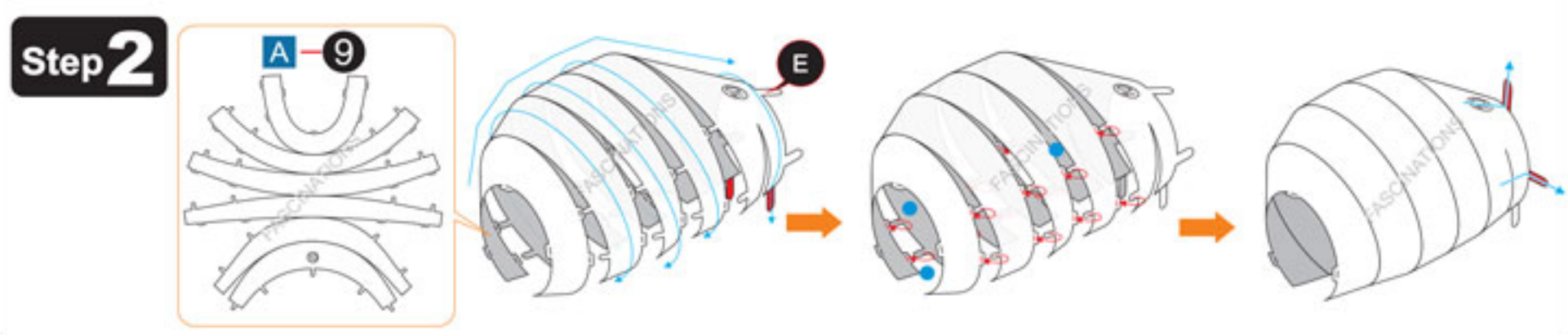
- Legends:**
- Engraved side / Glossy side
  - Inverse side
  - Attention point
  - Insert tab and bend 90 degrees
  - Insert tab and twist 90 degrees
- Recommended tools:**
- Wire cutters: helpful for taking parts from the metal sheets.
  - Tweezers or needle nose pliers: helpful for folding parts, bending and twisting tabs.
- Assembly tip:**  
If needed, slightly twist tabs to hold parts together then untwist and bend them down for a nice finish

## ASSEMBLY STEPS

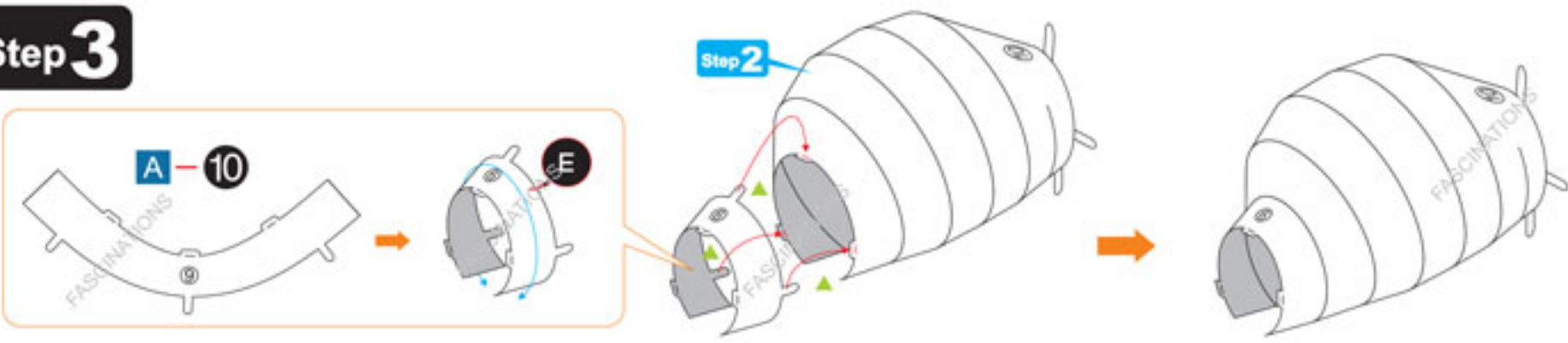
### Step 1



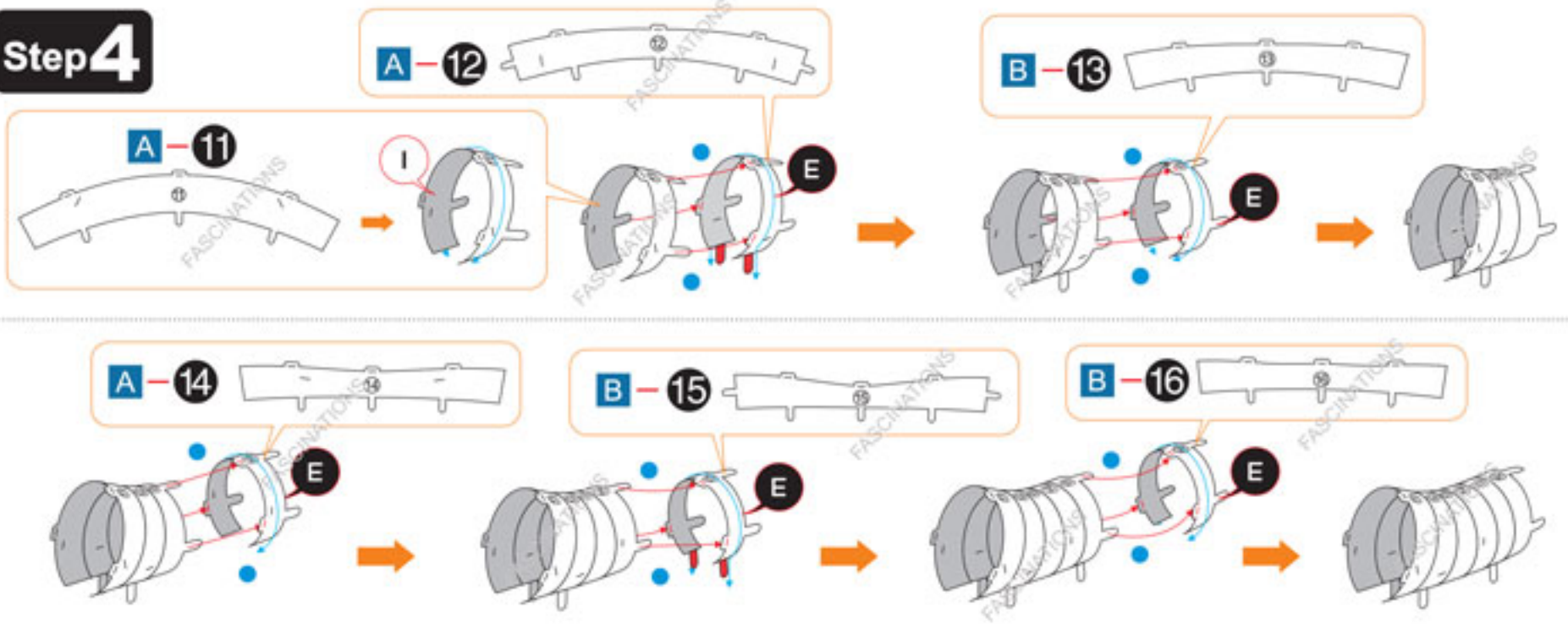
### Step 2



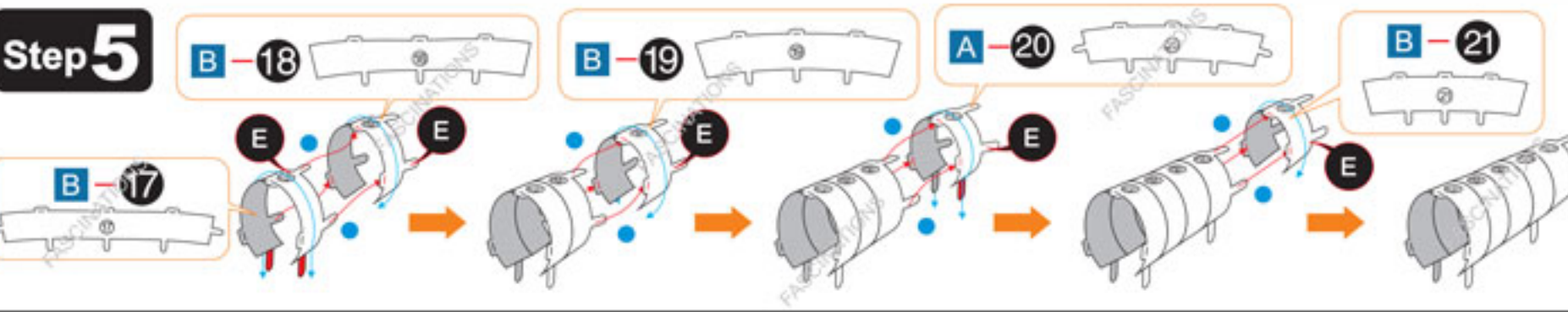
Step 3



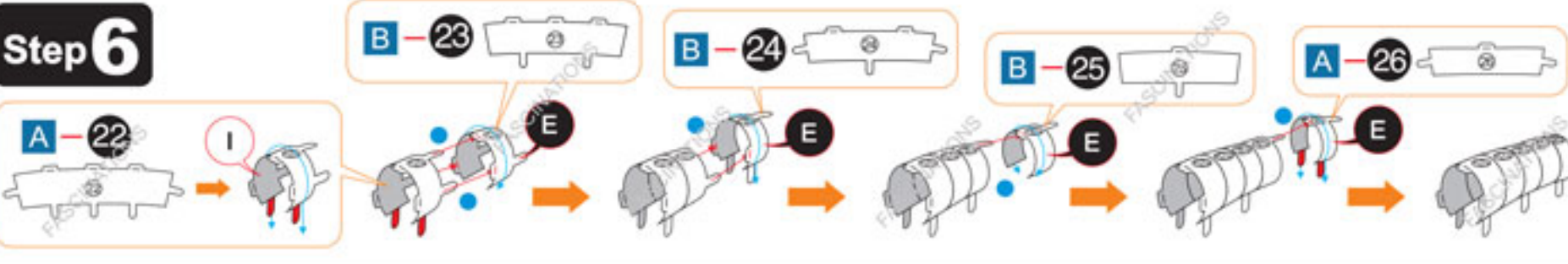
Step 4



Step 5



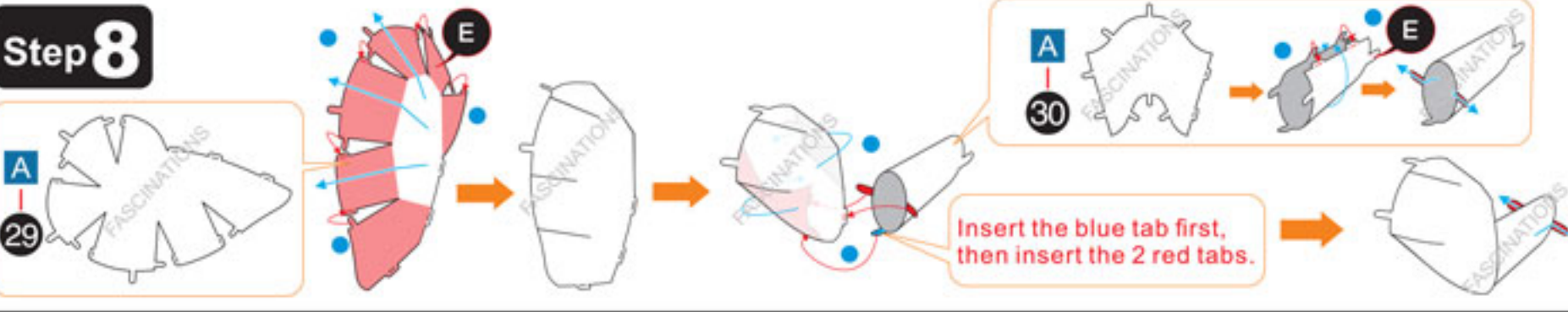
Step 6



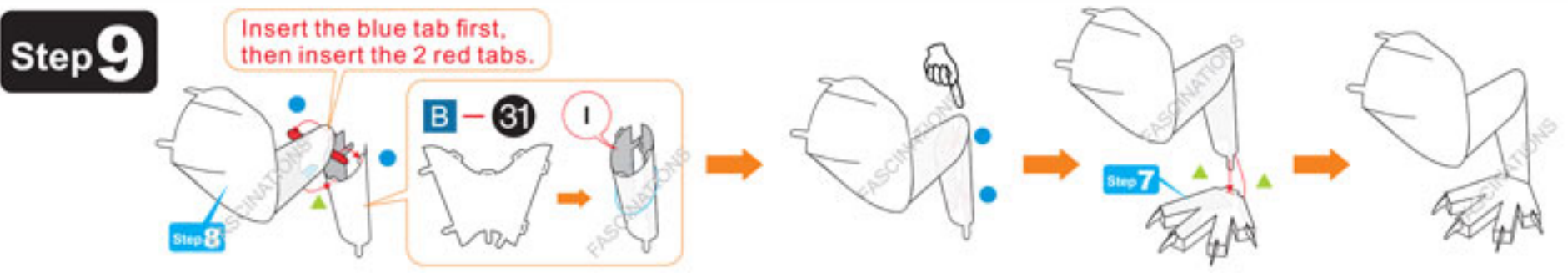
Step 7



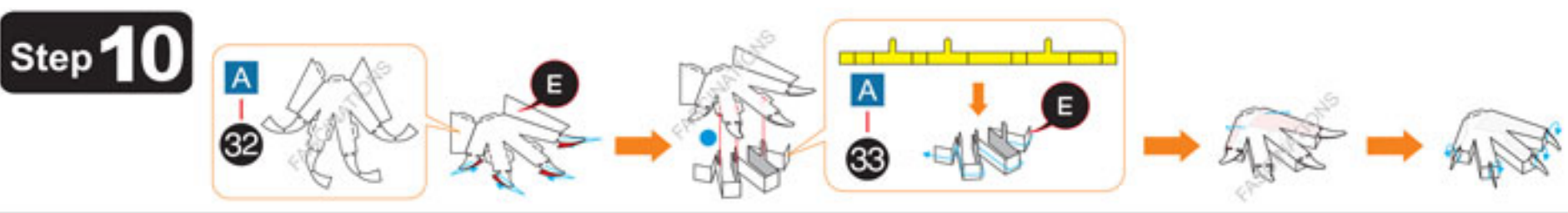
Step 8



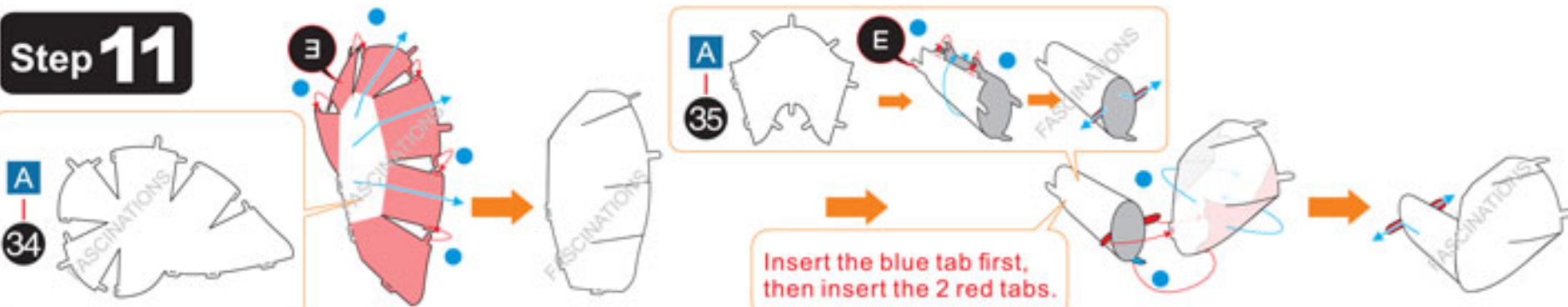
Step 9



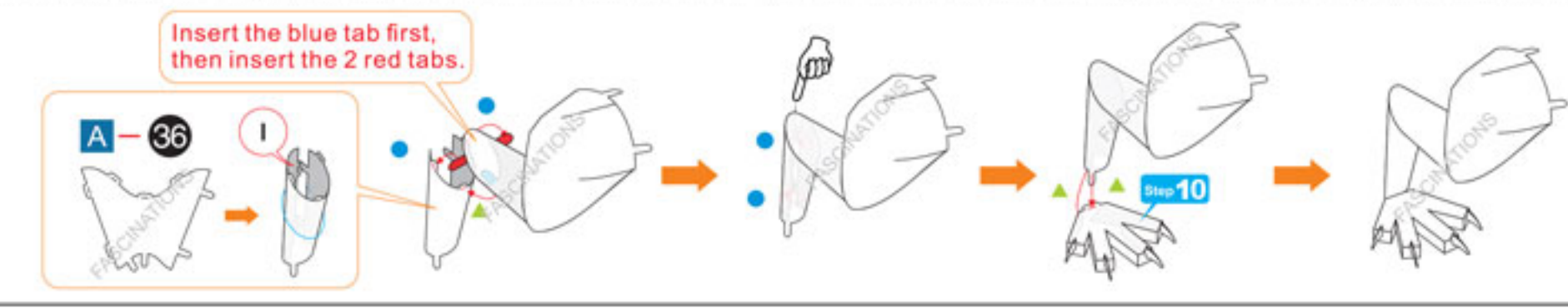
Step 10



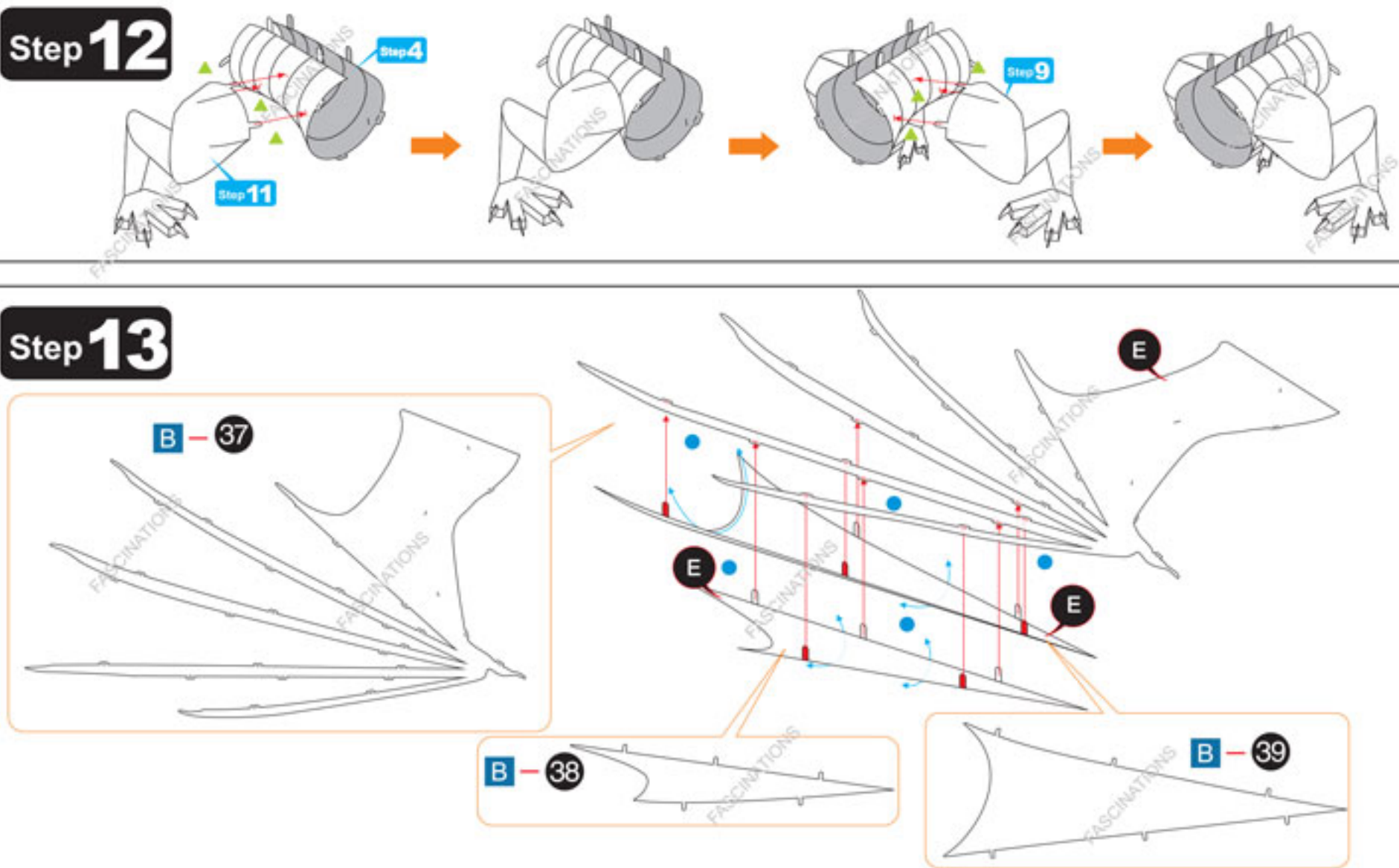
Step 11



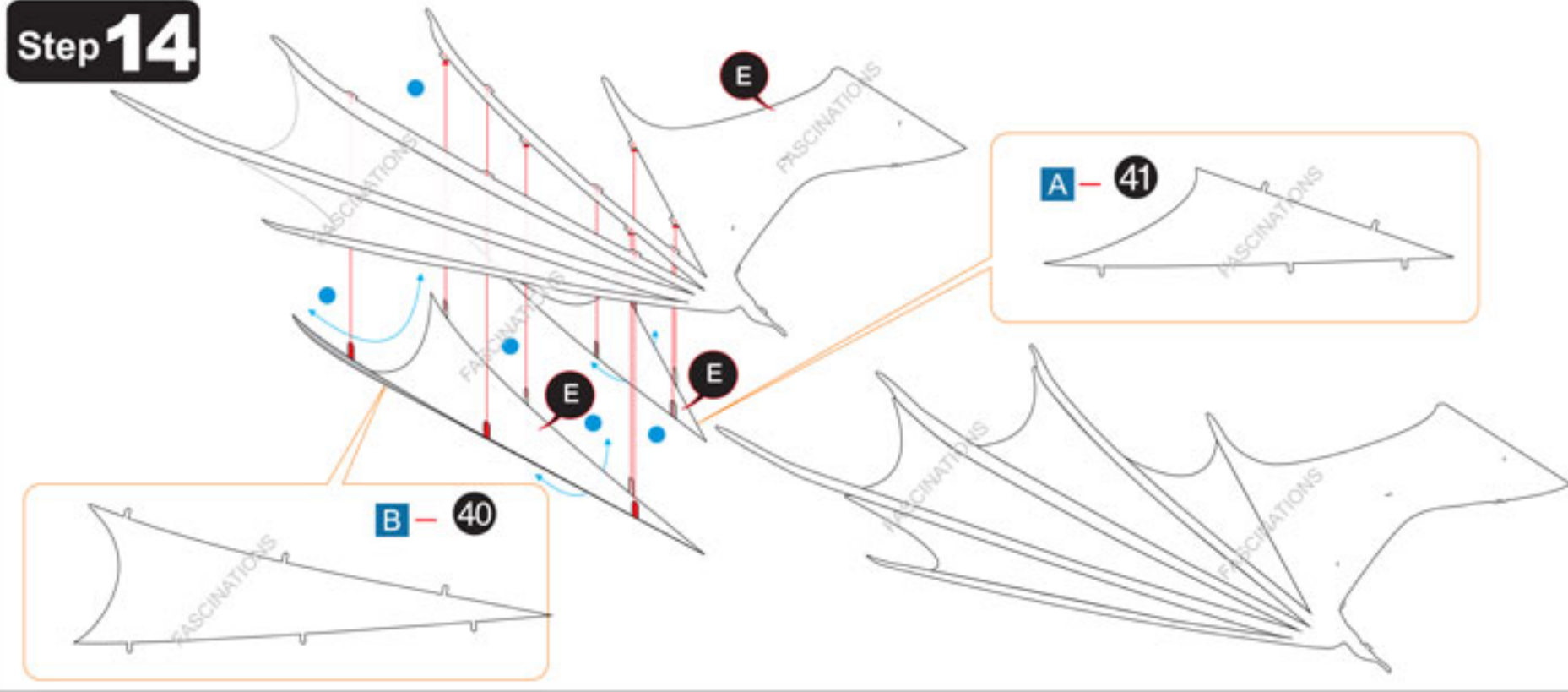
Step 12



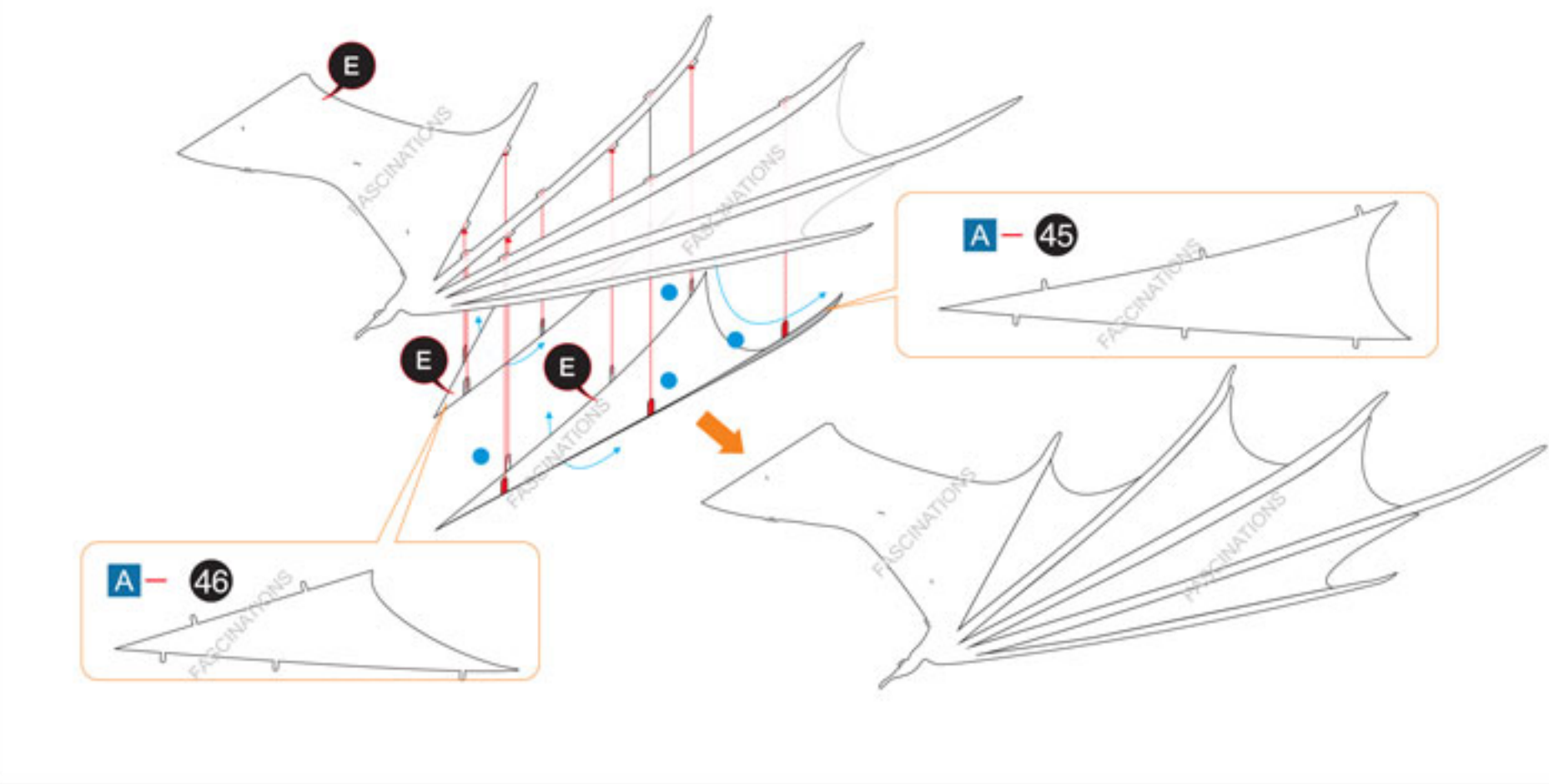
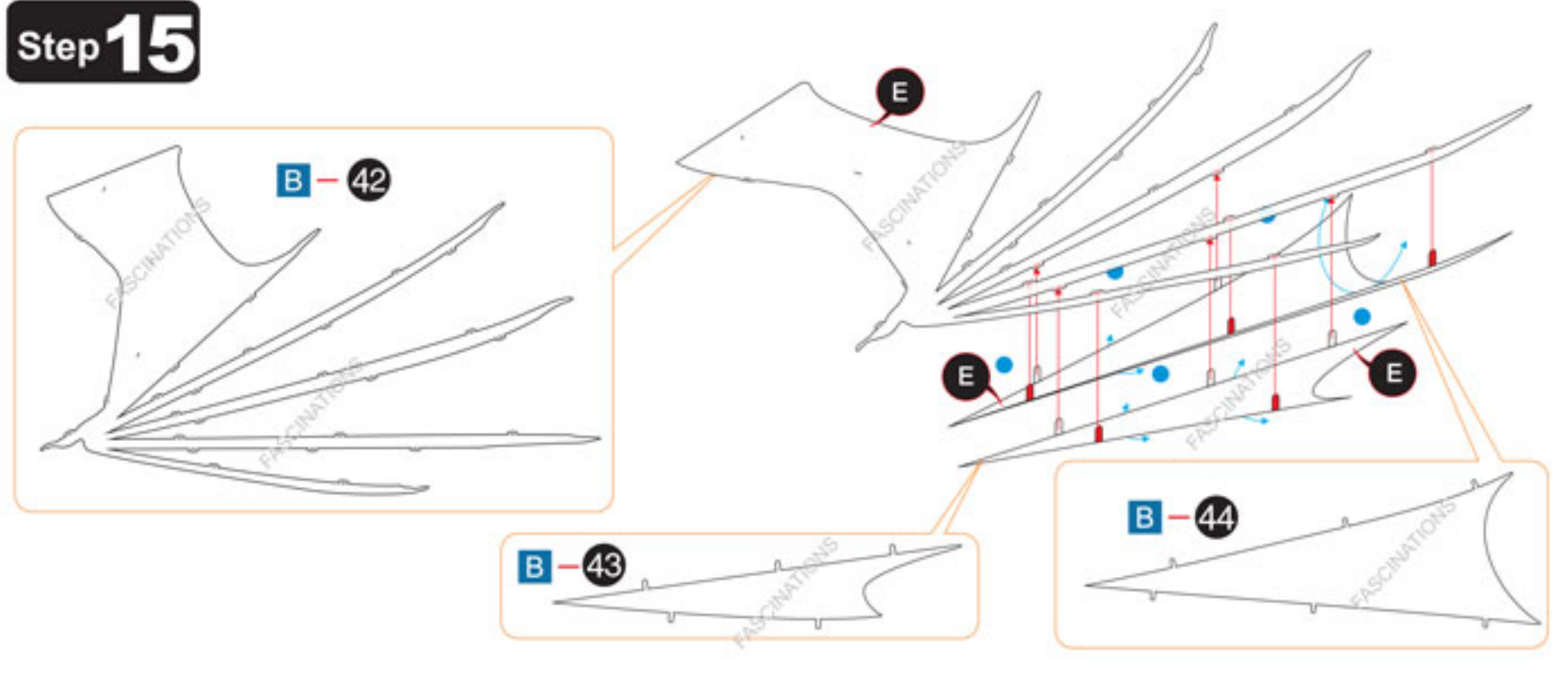
Step 13



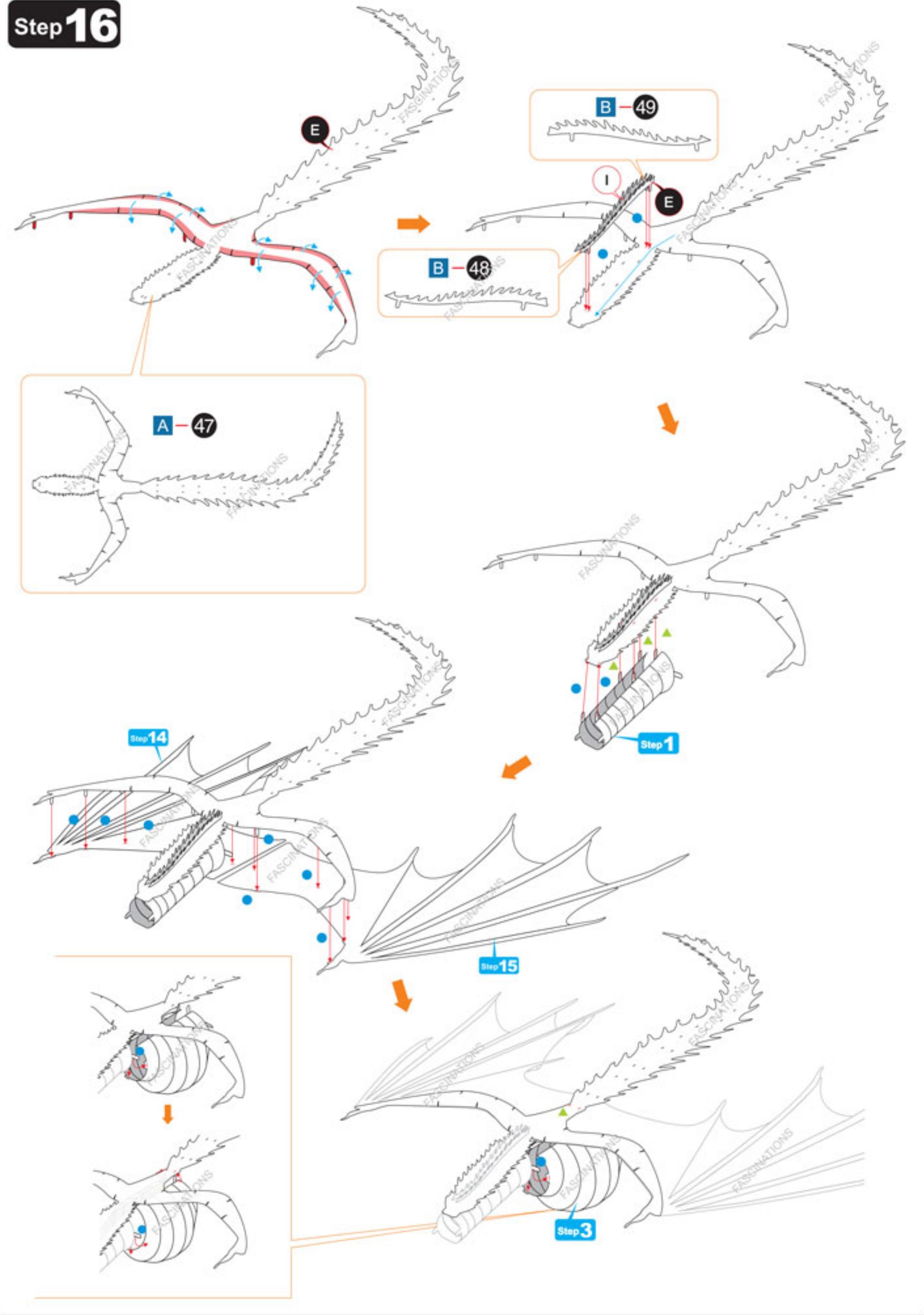
Step 14



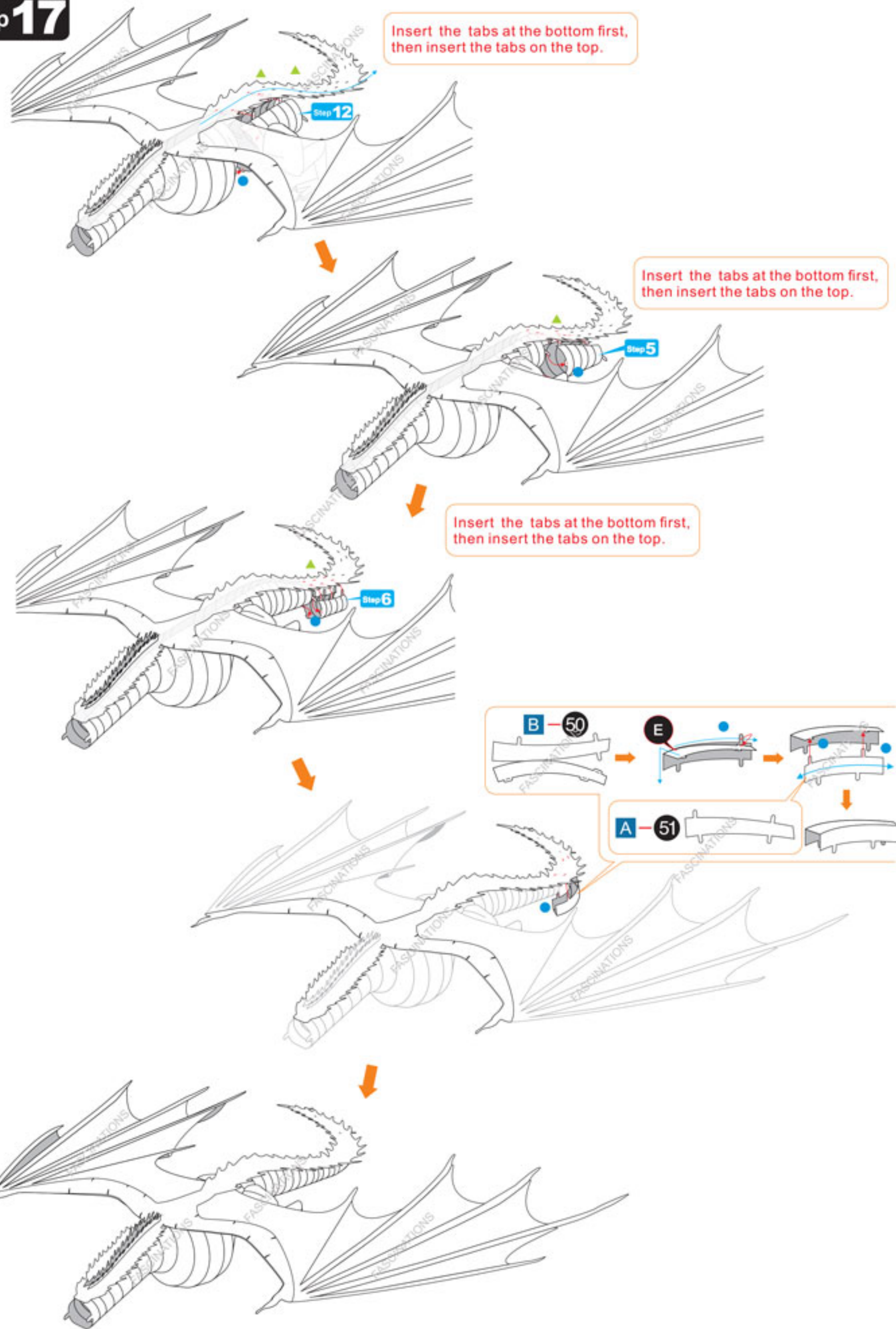
Step 15



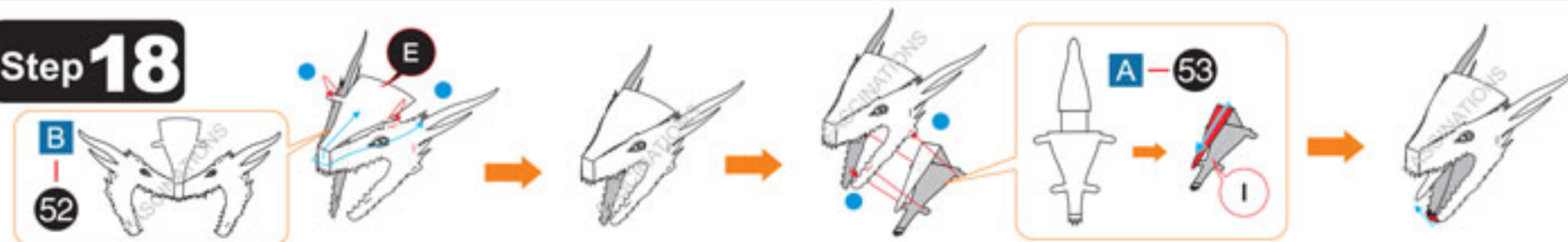
Step 16



# Step 17



# Step 18



# Step 19

