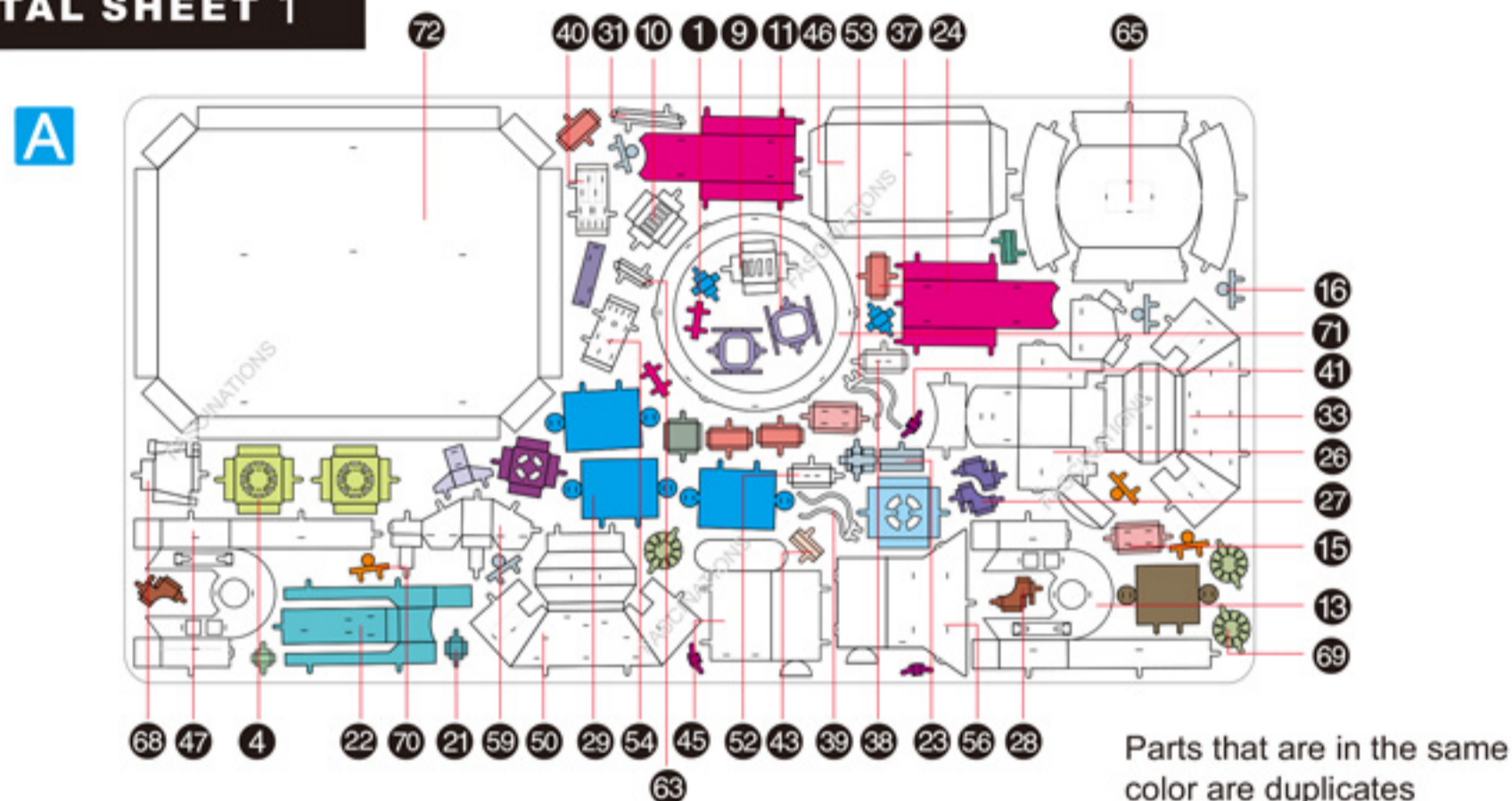
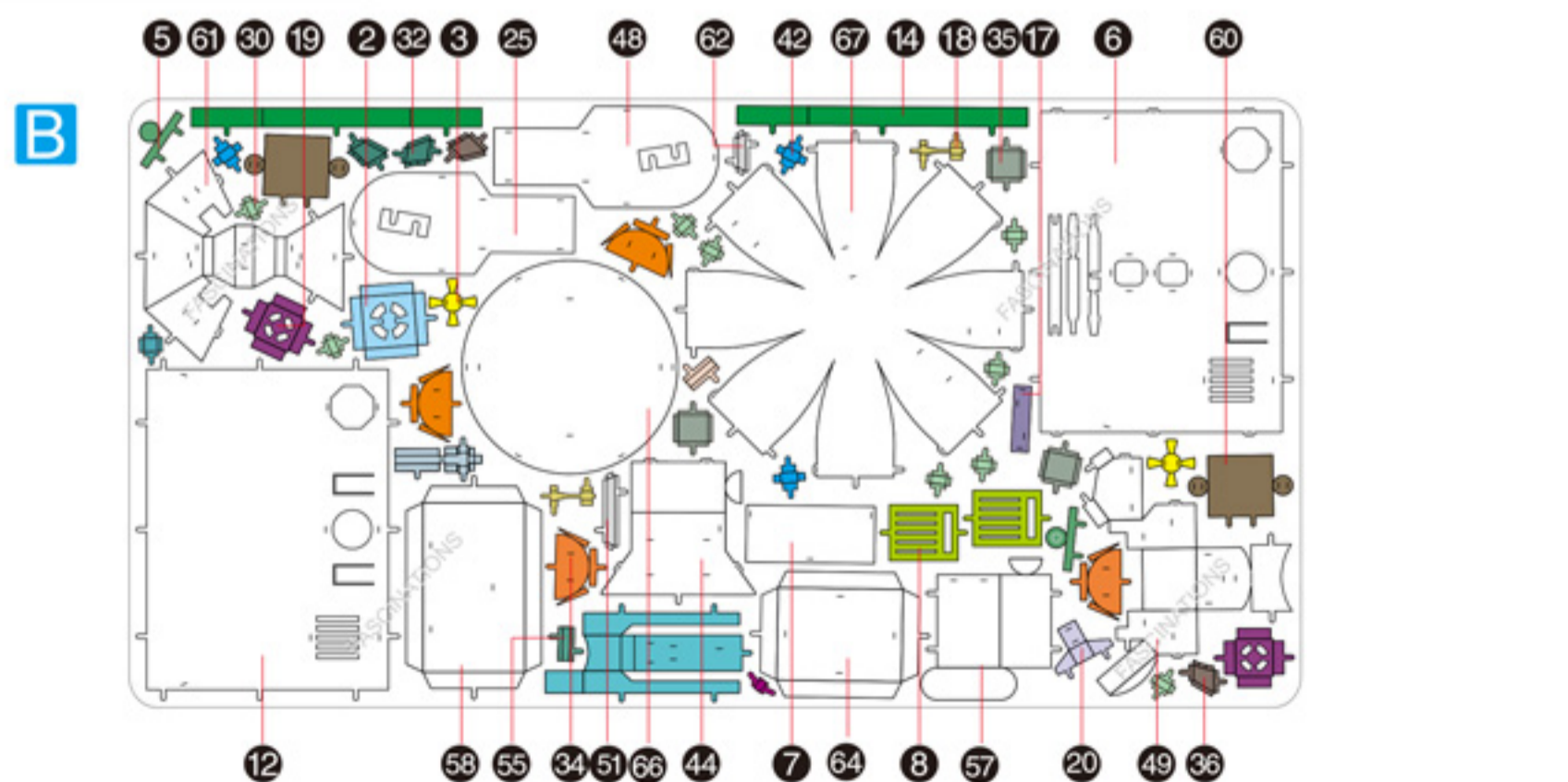


METAL SHEET 1

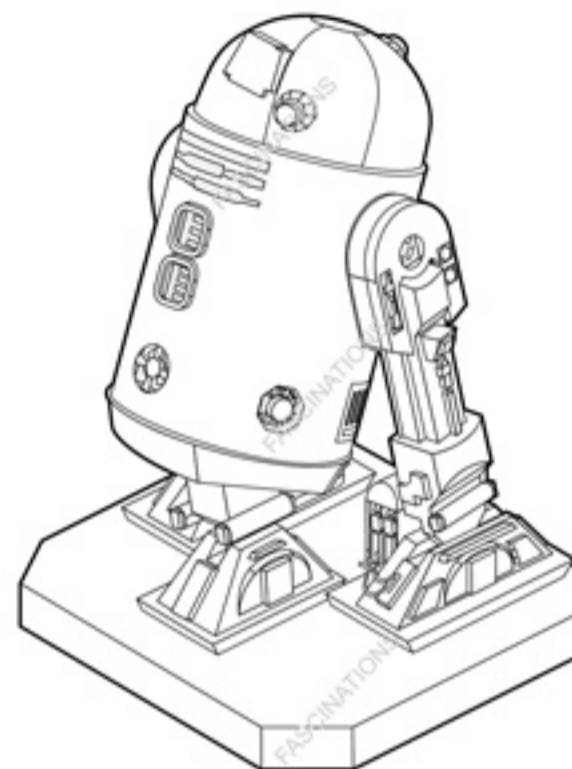


METAL SHEET 2



! In order to avoid possible injury from sharp edges, please carefully discard the metal sheets after parts have been removed.

ICX 131



It is highly recommended that you visit www.metalearth.com/360/icx131 to see the completed model before assembling your own

TO CREATE THE BEST CONNECTIONS



Legends:

- E** Engraved/Color side
- NE** Non-engraved/Silver side
- Attention point
- Insert tab and bend 90 degrees
- Insert tab and twist 90 degrees

Recommended tools:

-Wire cutters: helpful for taking parts from the metal sheets.



-Tweezers or needle nose pliers: helpful for folding parts, bending and twisting tabs.

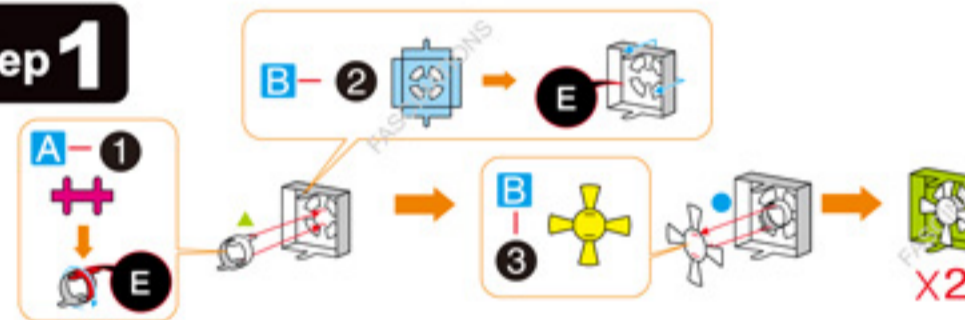


Assembly tip:

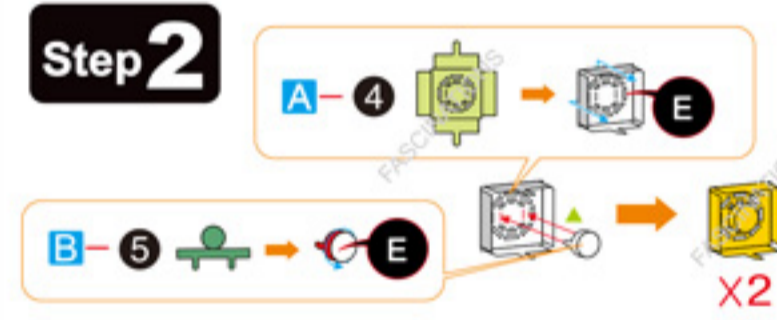
If needed, slightly twist tabs to hold parts together then untwist and bend them down for a nice finish

ASSEMBLY STEPS

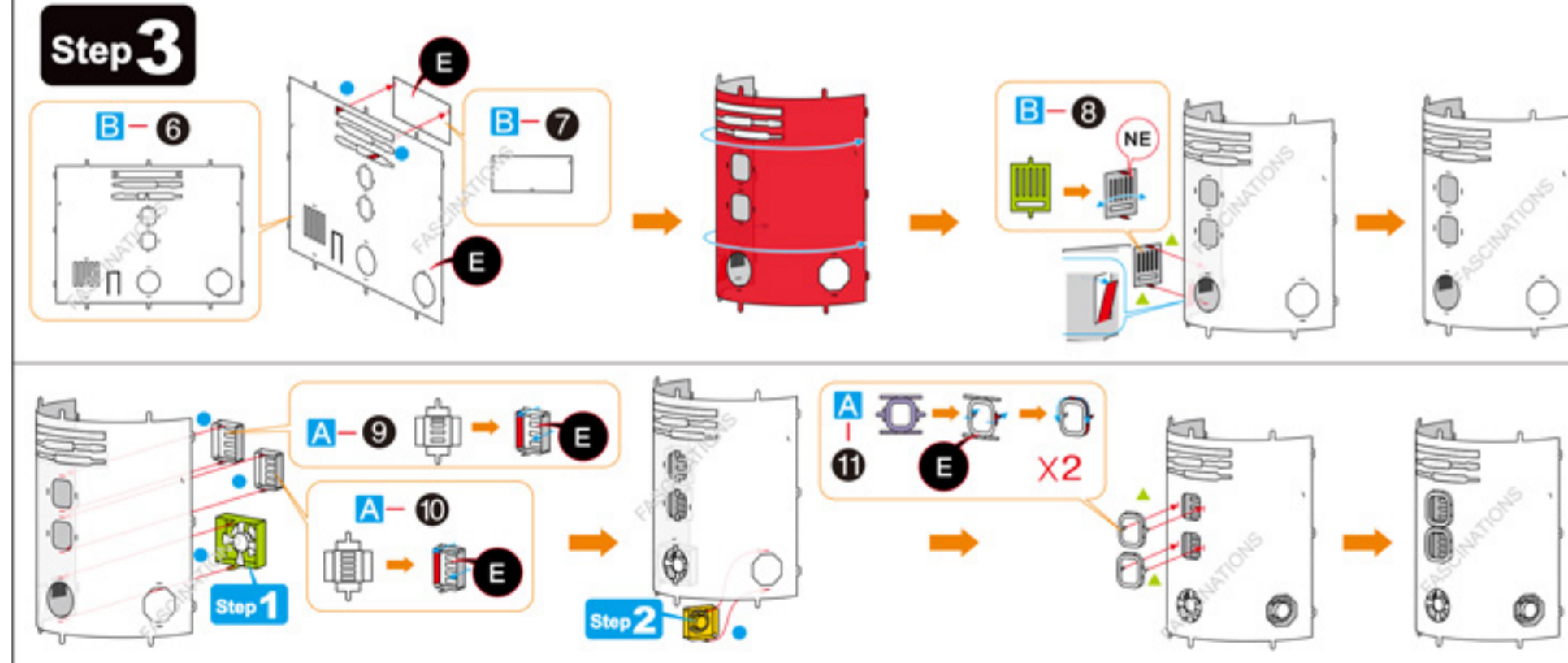
Step 1



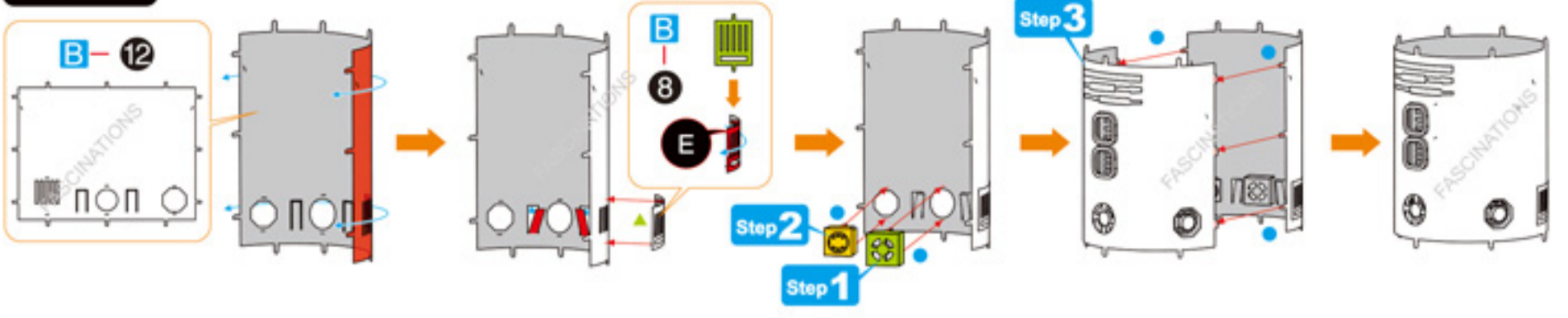
Step 2



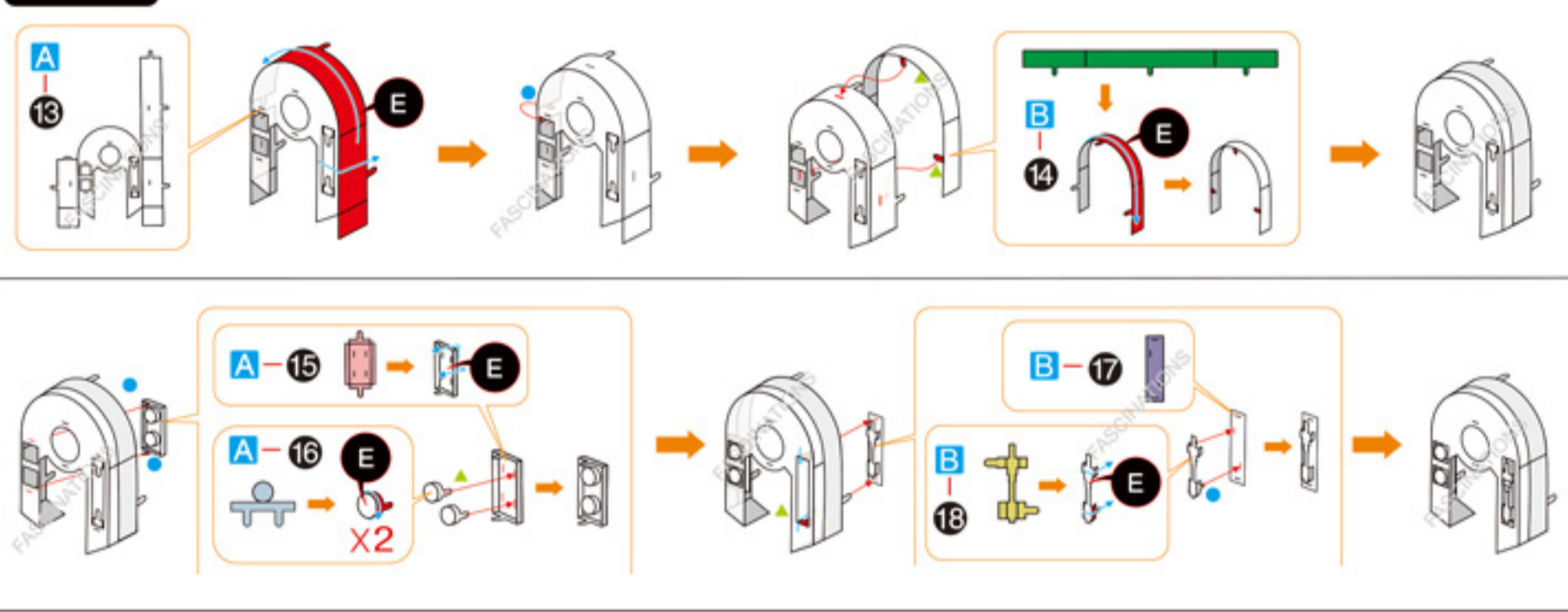
Step 3



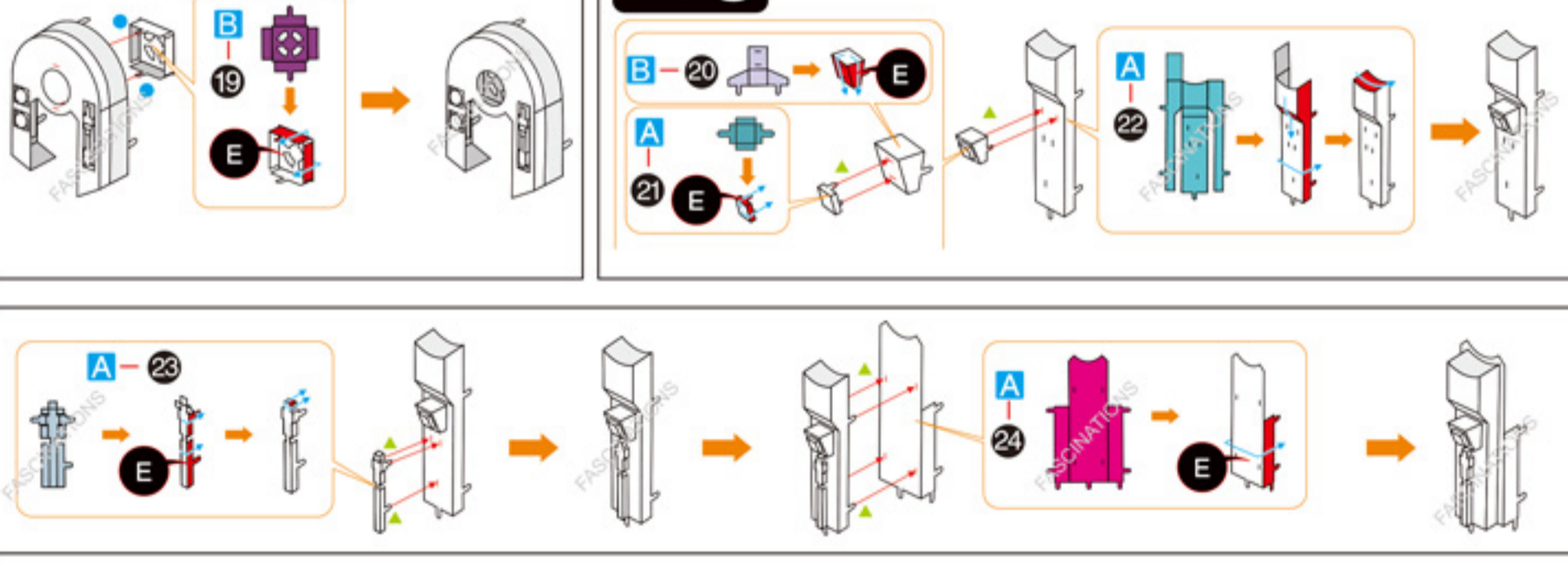
Step 4



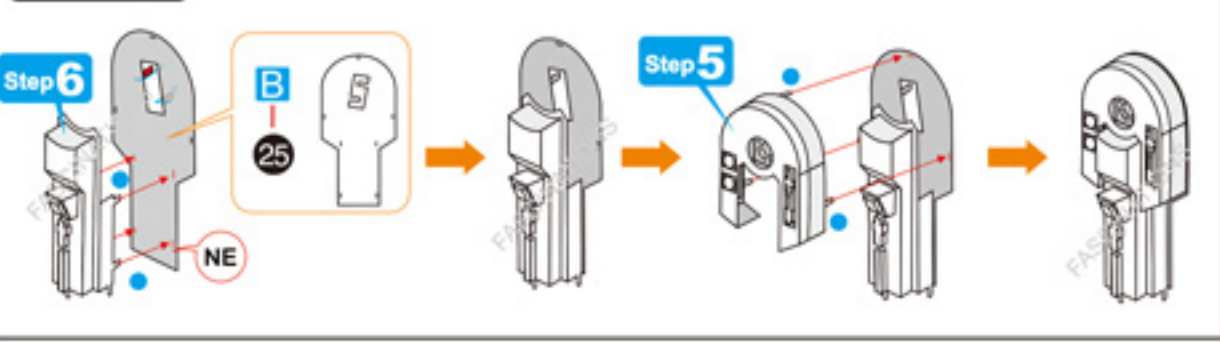
Step 5



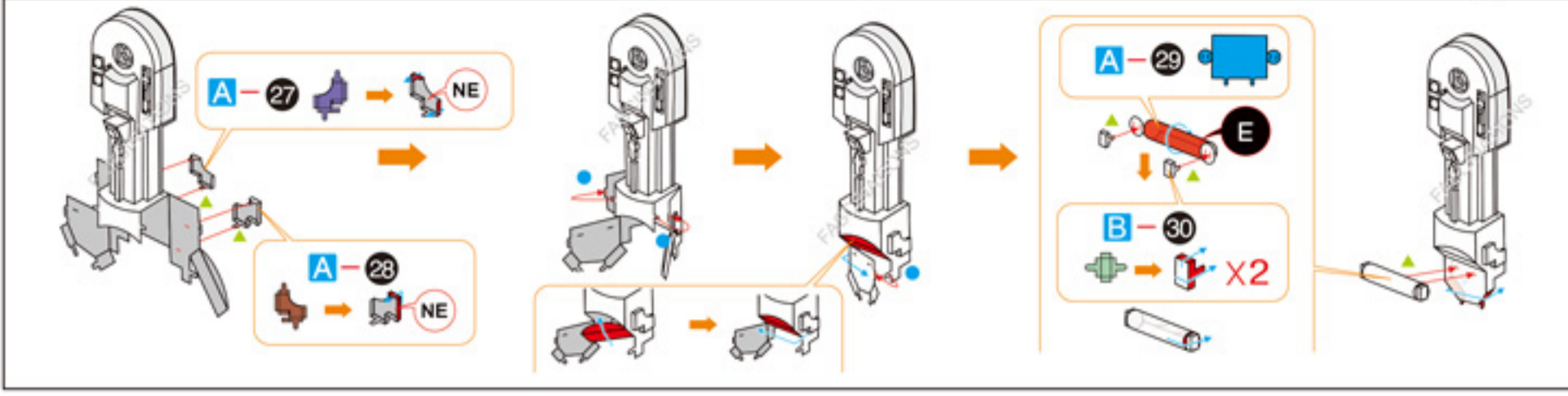
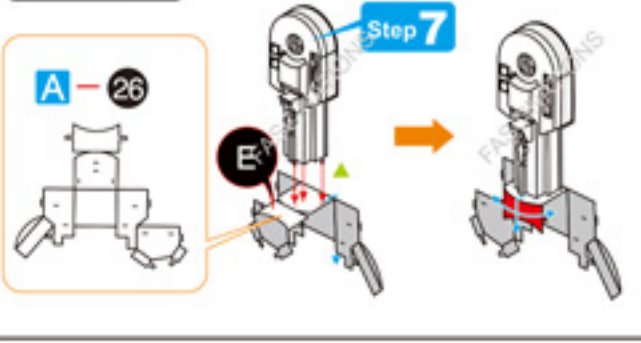
Step 6



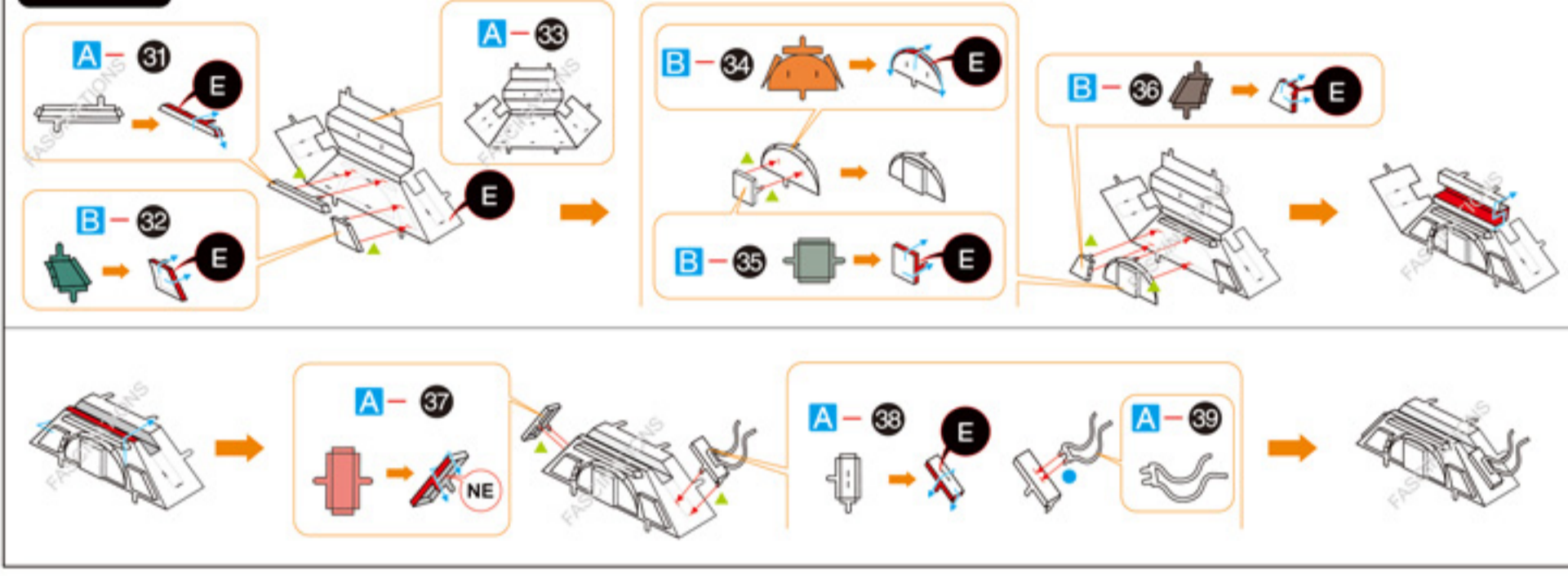
Step 7



Step 8



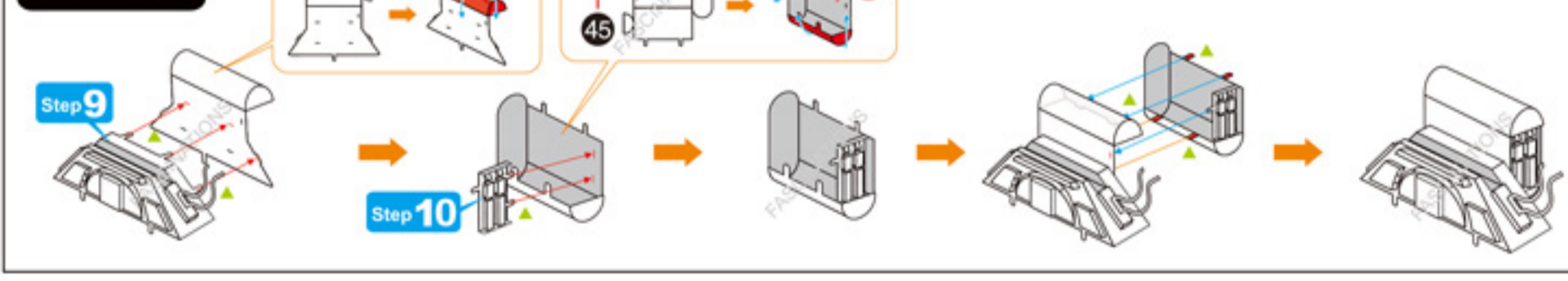
Step 9



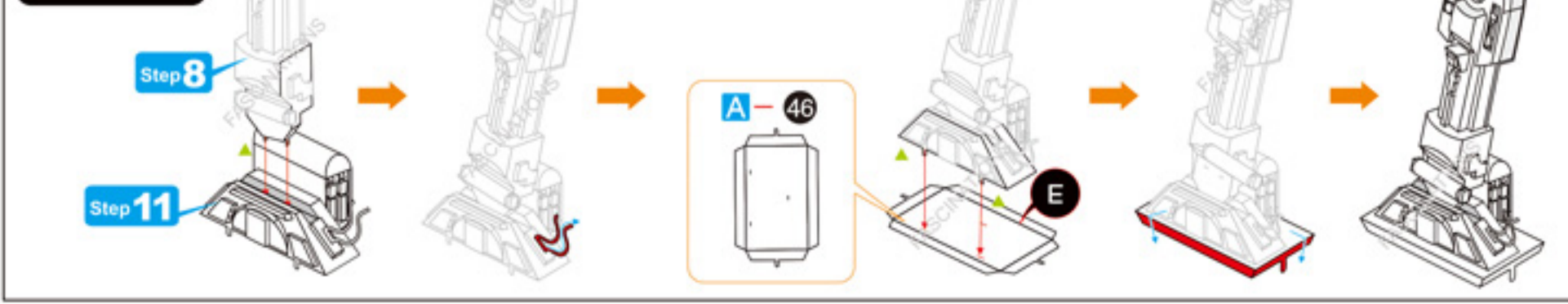
Step 10



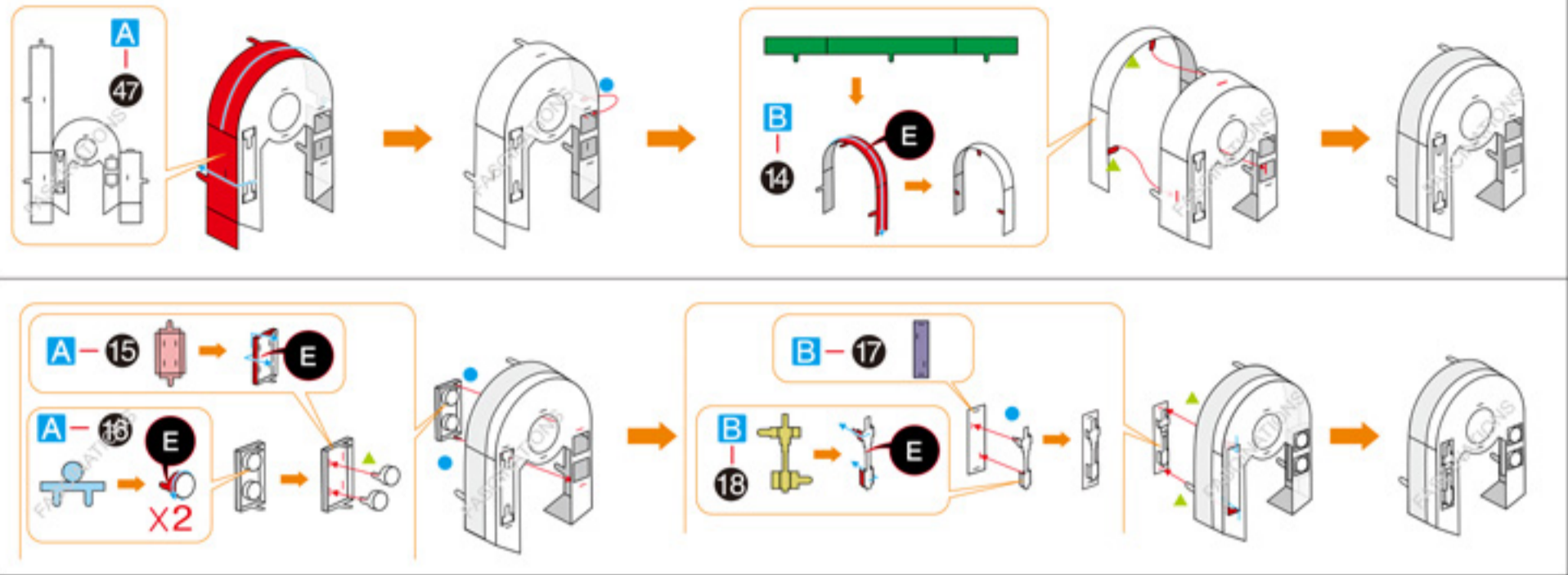
Step 11



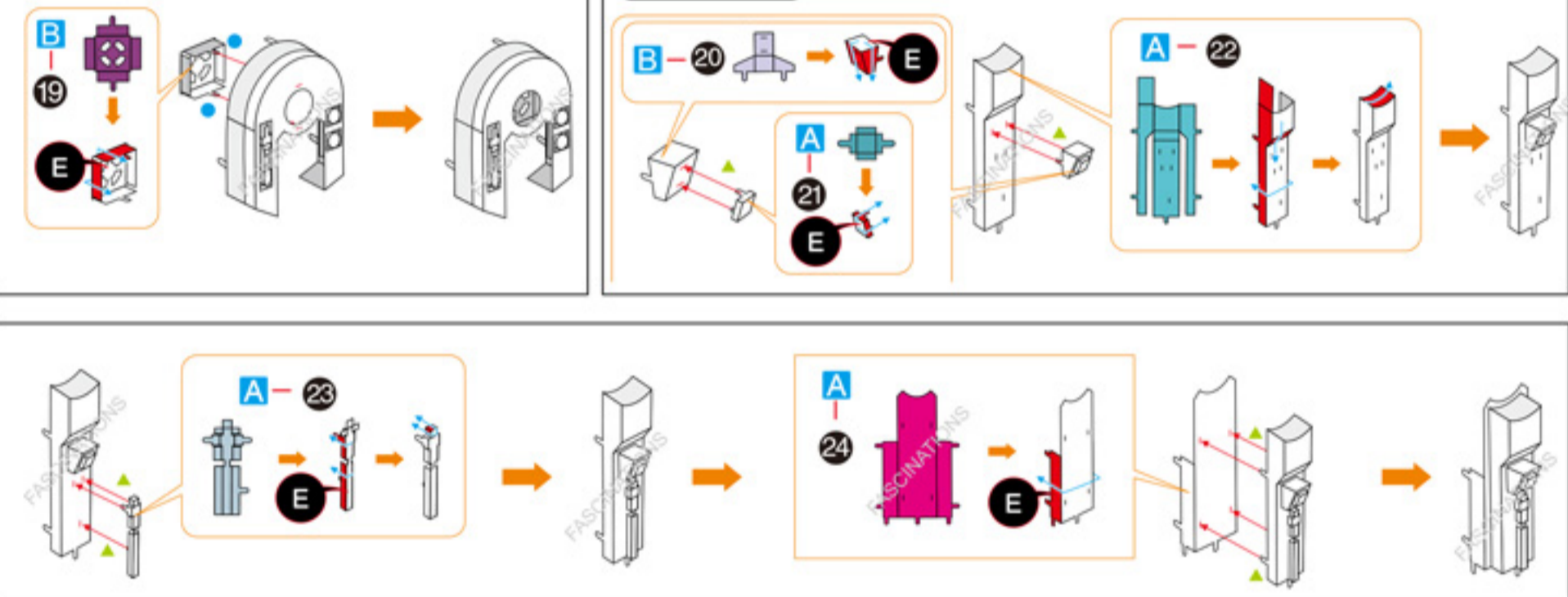
Step 12



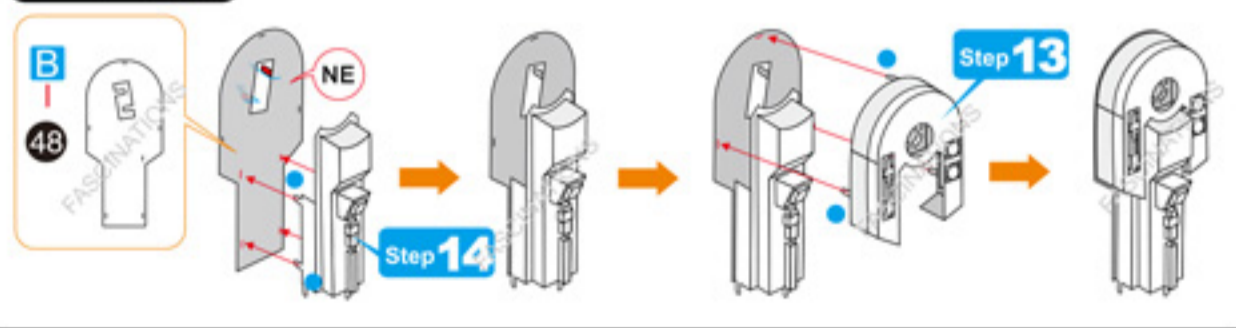
Step 13



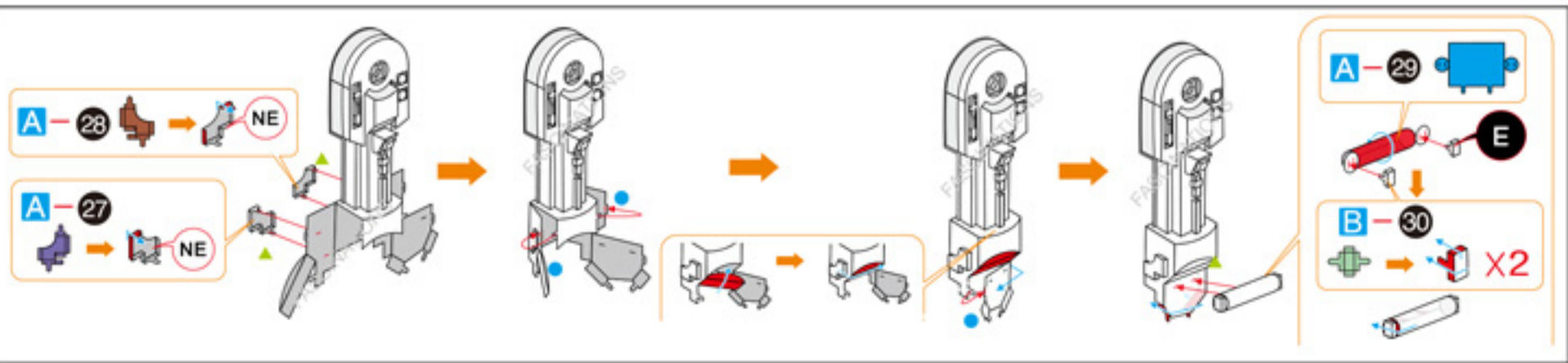
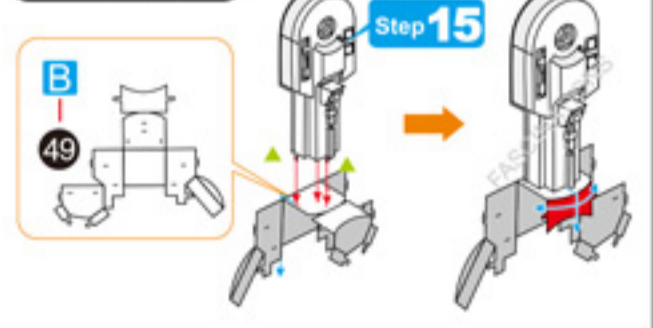
Step 14



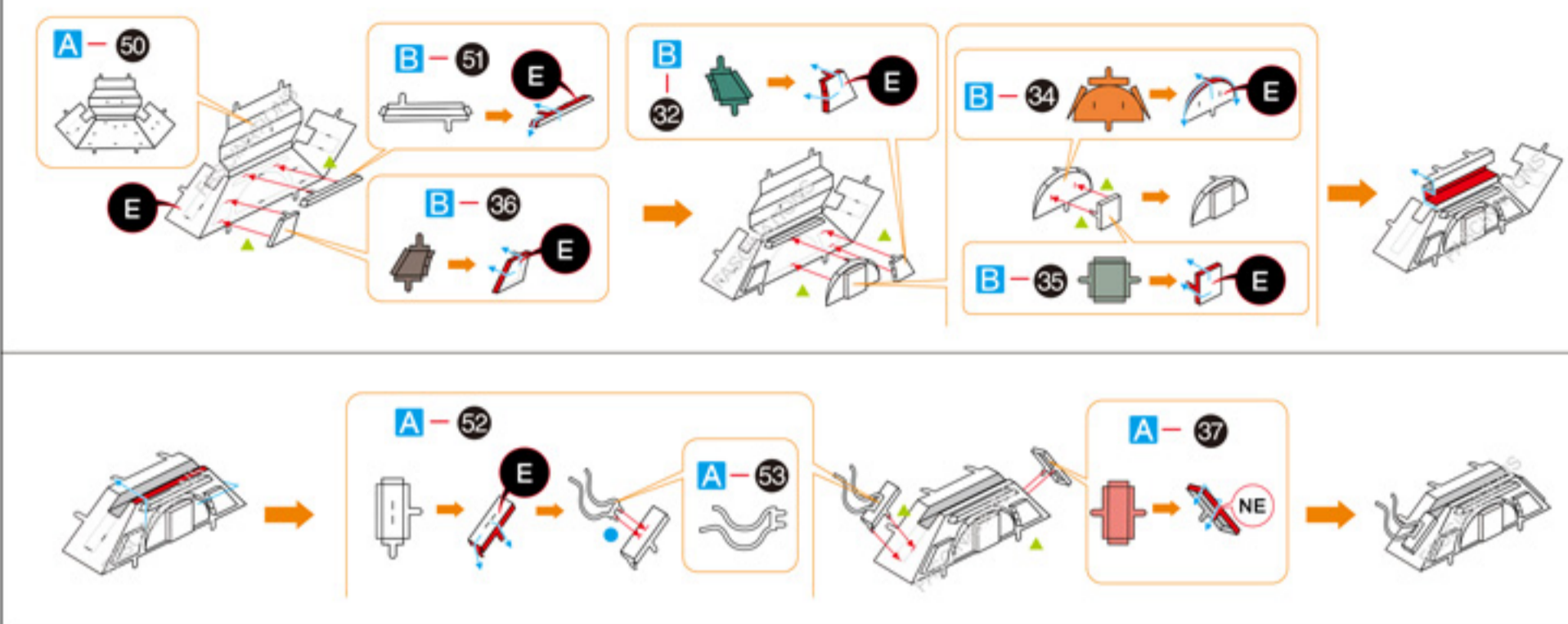
Step 15



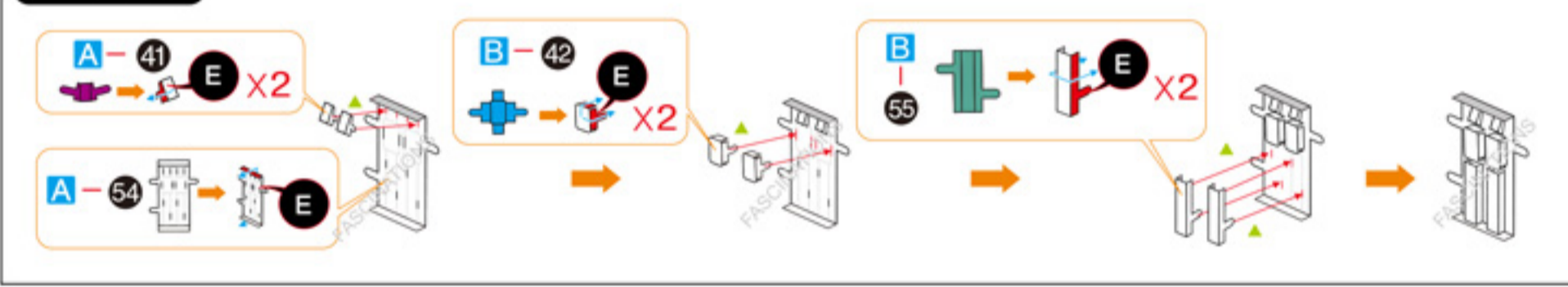
Step 16



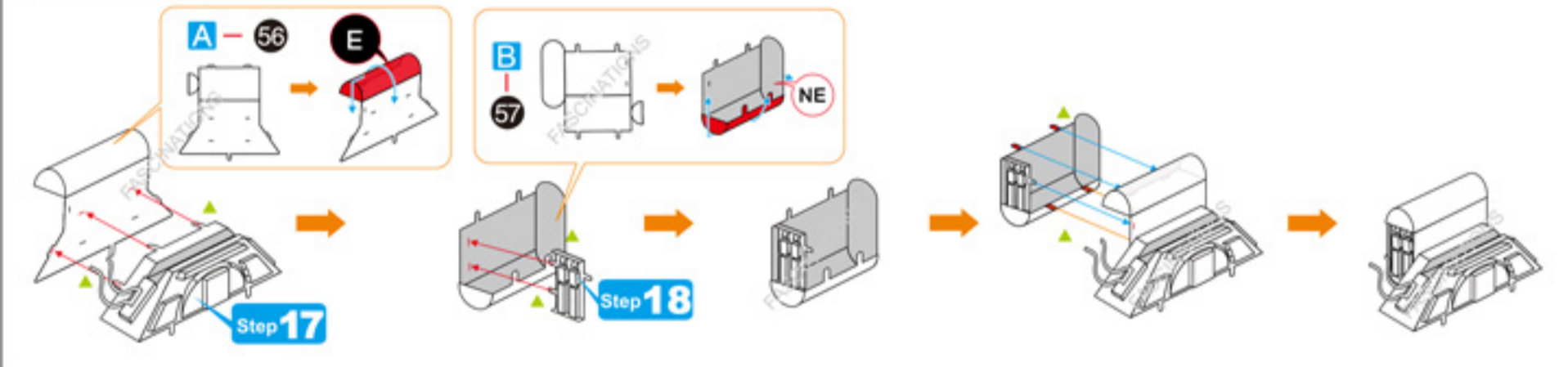
Step 17



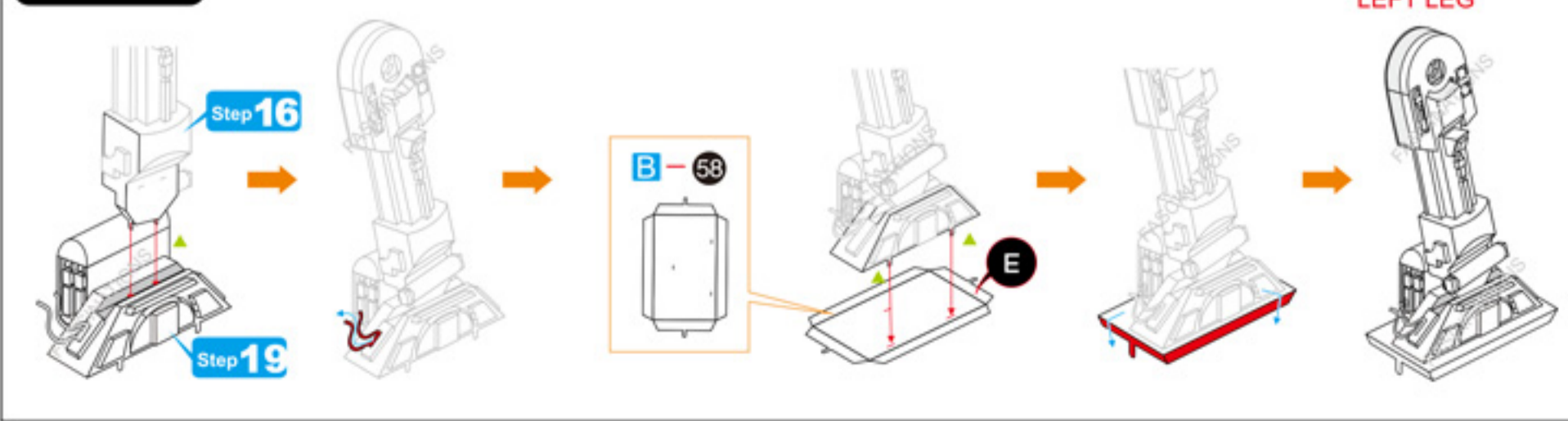
Step 18



Step 19



Step 20



Step 21

A-59

B-30 **NE** X2

B-60 **E** X2

Step 22

B-61

A-37 **E** X2

B-62 **E**

A-63 **NE**

B-34 **E**

B-35 **E**

Step 23

Step 21

Step 22

B-64 **E**

Step 24

A-65 **E**

Step 25

Step 23

Step 24

B-66 **E**

Step 26

Step 4

Step 12 **Right Leg**

Step 25

Step 20 **Left Leg**

Step 27

Fold tabs down 90 degrees and holes down 45 degrees before connecting them.

B-67 **E**

A-68 **E**

A-69 **E**

A-70 **E** X3

A-71 **E**

Step 28

Step 26

Step 27

A-72 **E**

Fascinations
©2019 Fascinations Seattle, WA
www.metalearth.com