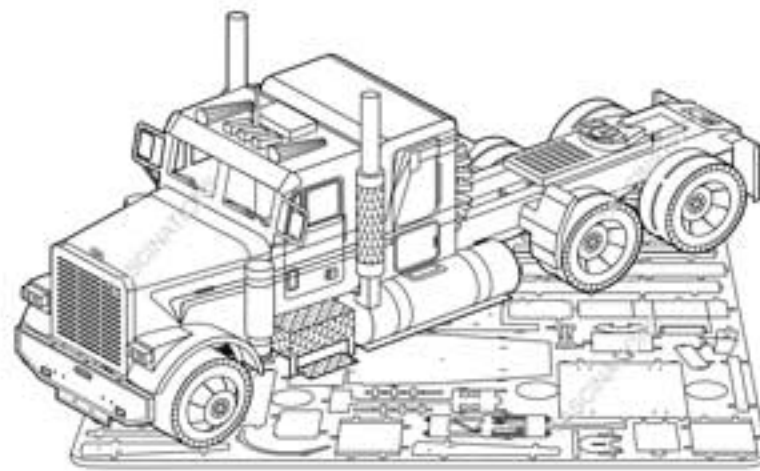


Metal Earth

3D METAL MODEL KITS

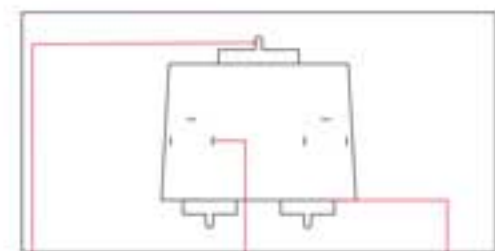


Freightliner FLC
Item No. MMS144

360°
view



It is highly recommended that you visit
www.metal-earth.com/360/mms144
to see the completed model before assembling your own



Insertion
tabs are
inserted
and then
folded

Insertion holes

Fold lines can
be seen
as shown
here

Legends:

E Engraved side

NE Non-engraved side

Attention point

Insert tab and bend 90 degrees

Insert tab and twist 90 degrees

Assembly tip:

If needed, slightly twist tabs to hold parts together then untwist and bend them down for a nice finish

Recommended tools:

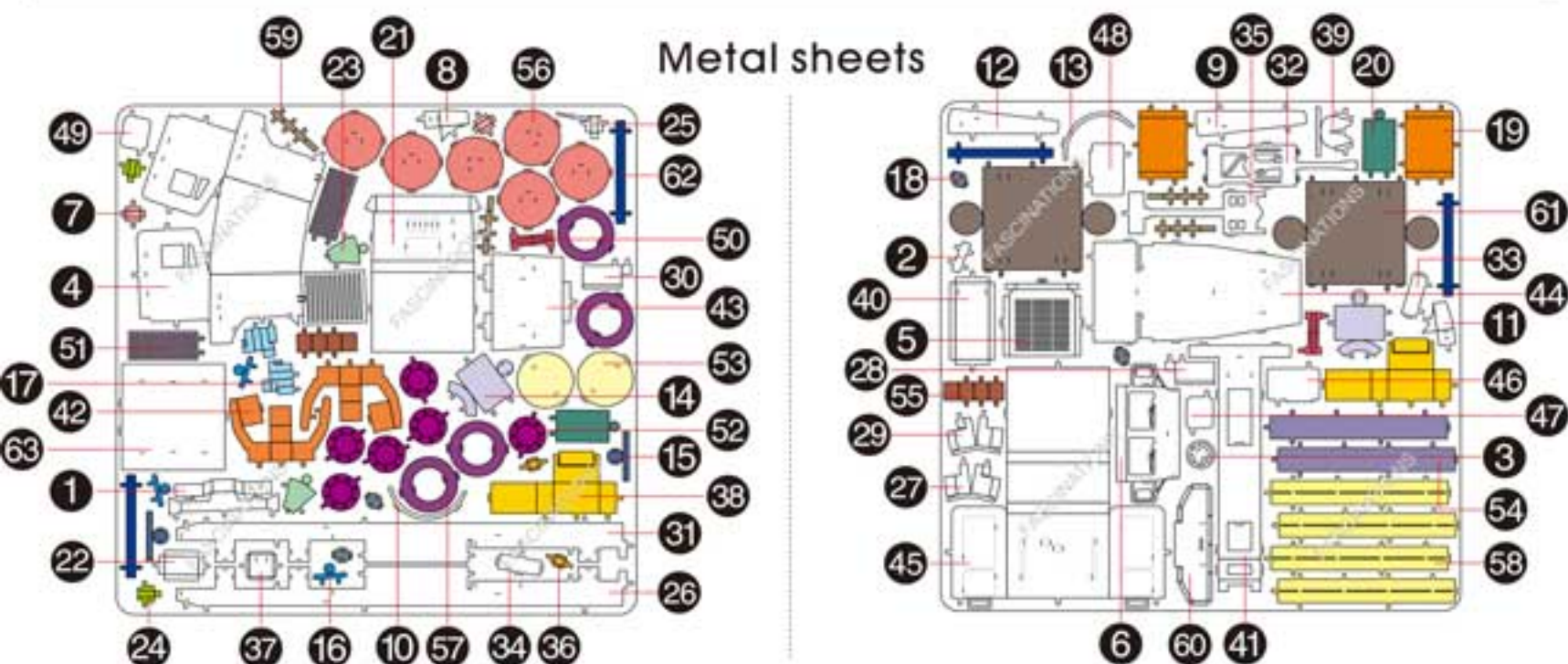
-Wire cutters: helpful for taking parts from the metal sheets.



-Tweezers or needle nose pliers: helpful for folding parts, bending and twisting tabs.



Metal sheets



In order to avoid possible injury from sharp edges, please carefully discard the metal sheet after parts have been removed

Assembly Flow Chart

