

QUIDDITCH™ PITCH

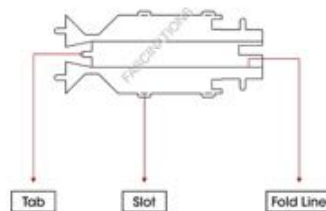
MMS466



It is highly recommended that you visit www.metalearth.com/360/mms466 to see the completed model before assembling your own

TO CREATE THE BEST CONNECTIONS

C - 1



Legends:

- Engraved/ Color side
- Non - engraved/ Silver side
- Attention point
- Insert tab and bend 90 degrees
- Insert tab and twist 90 degrees

Recommended tools:

- Wire cutters: helpful for taking parts from the metal sheets.
- Tweezers or needle nose pliers: helpful for folding parts, bending and twisting tabs.



Assembly tip:

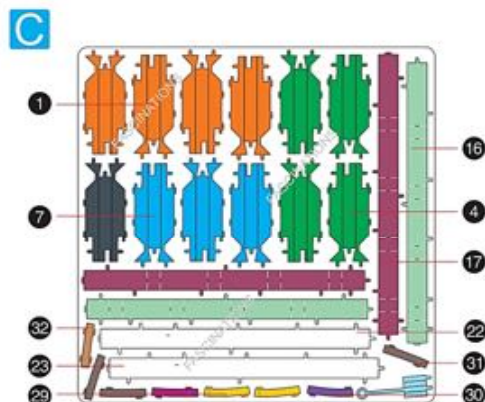
If needed, slightly twist tabs to hold parts together then untwist and bend them down for a nice finish.



In order to avoid possible injury from sharp edges, please carefully discard the metal sheets after parts have been removed.

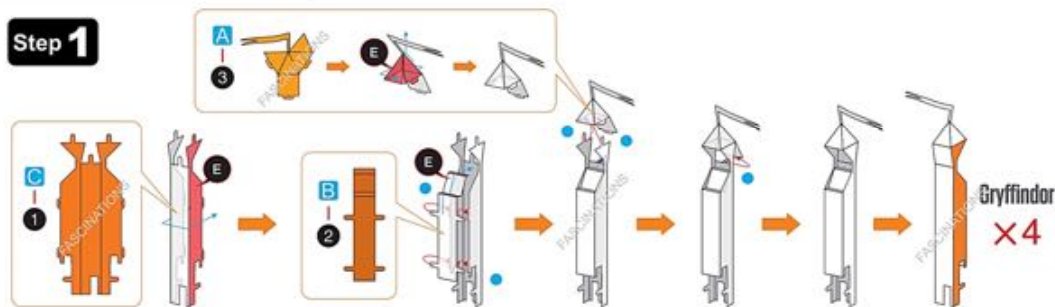
METAL SHEETS

Parts with same color are duplicates

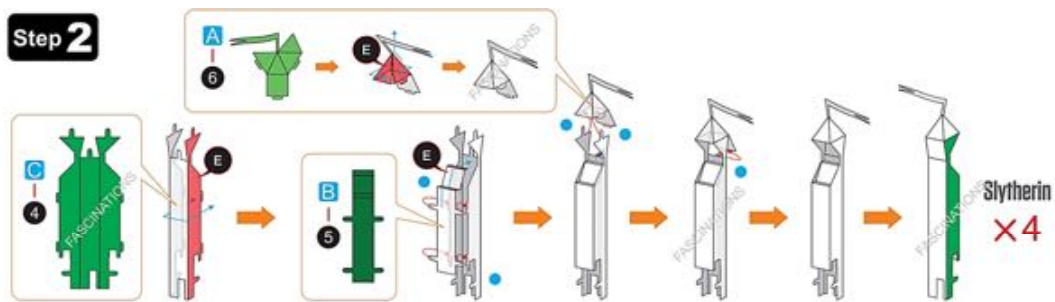


ASSEMBLY STEPS

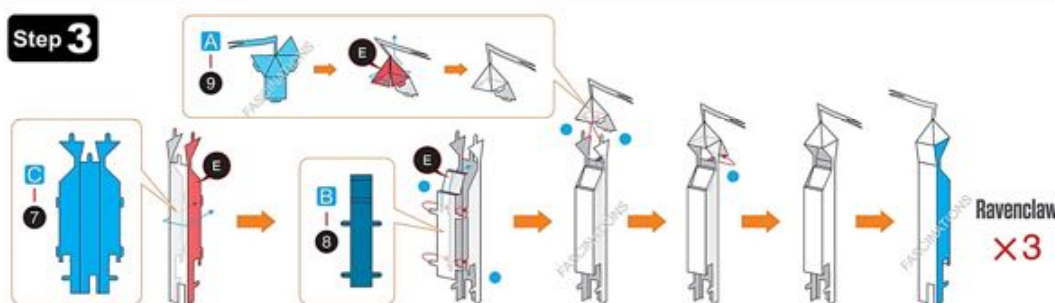
Step 1



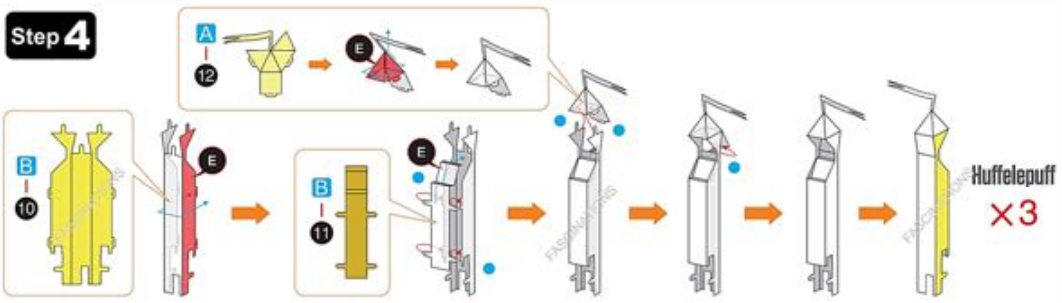
Step 2



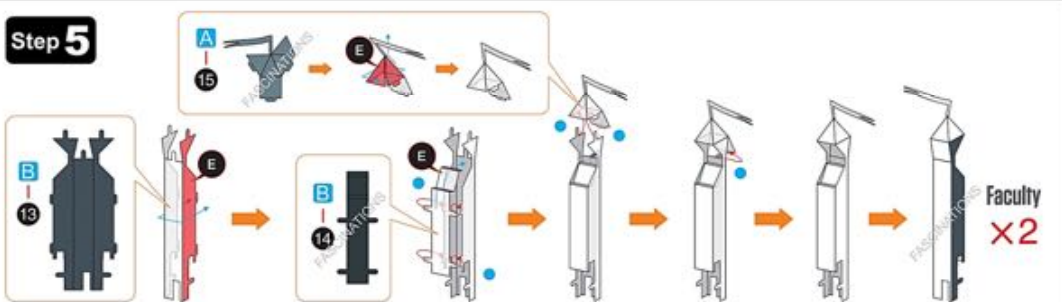
Step 3



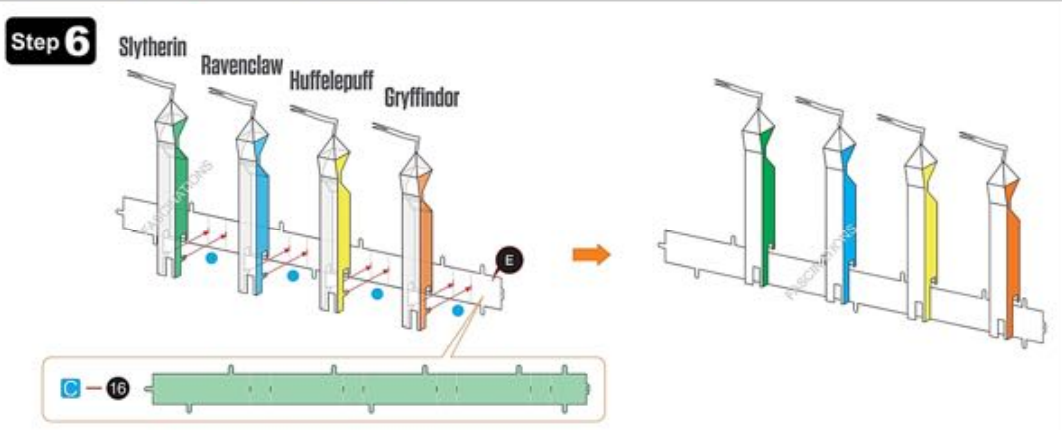
Step 4



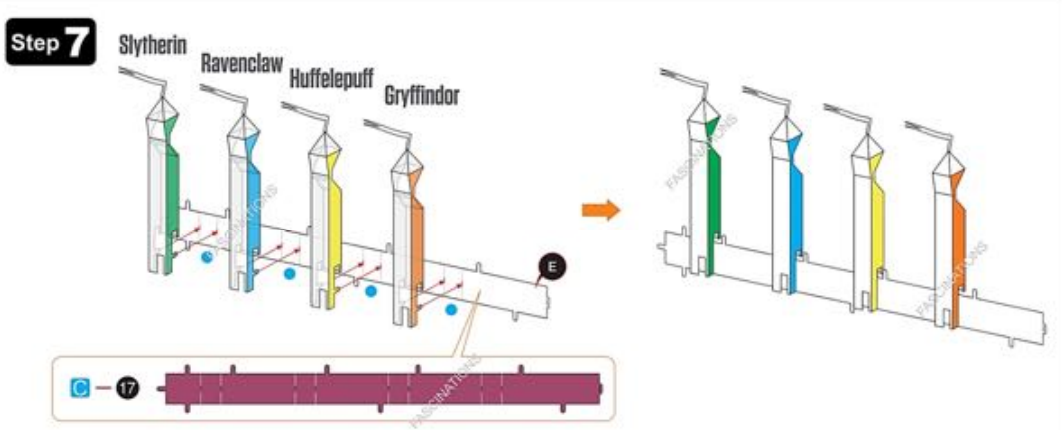
Step 5



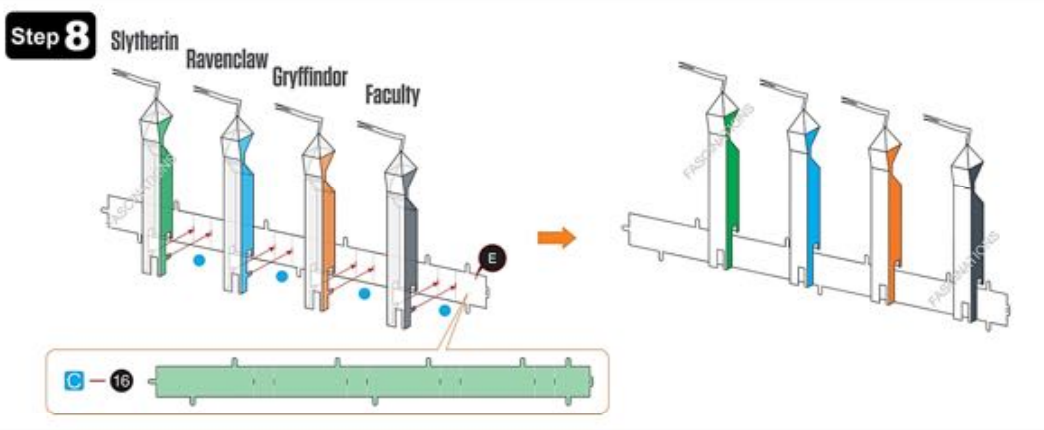
Step 6



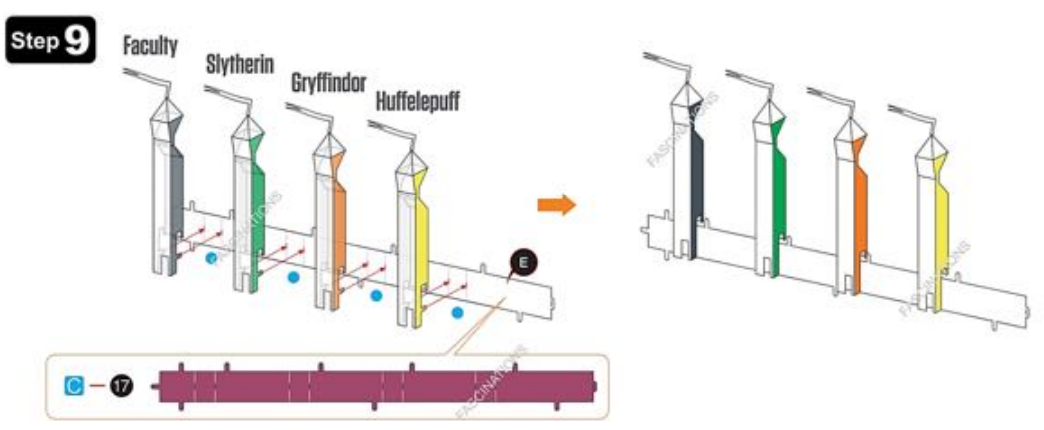
Step 7



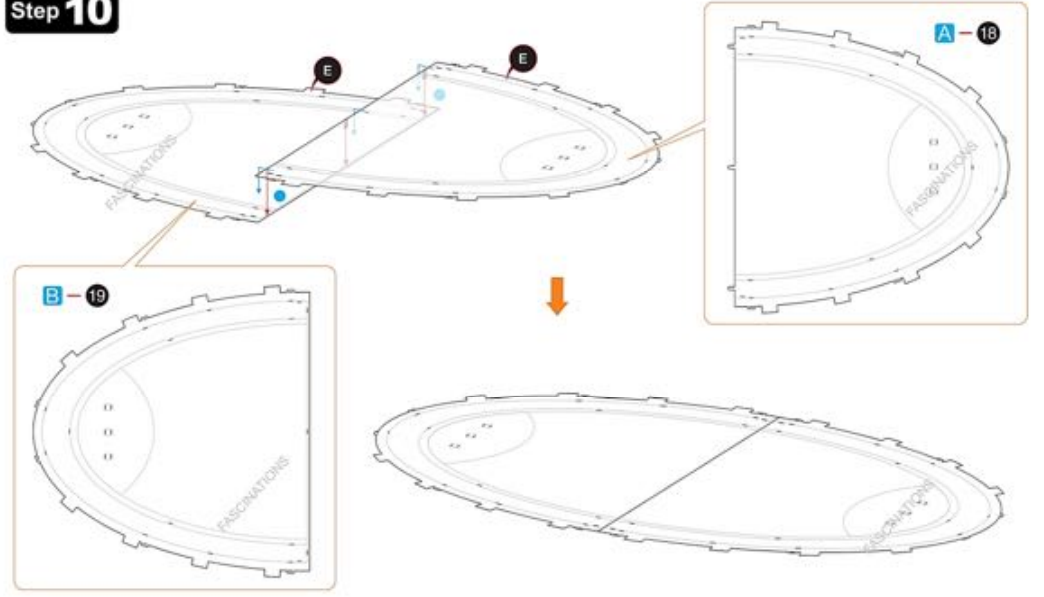
Step 8



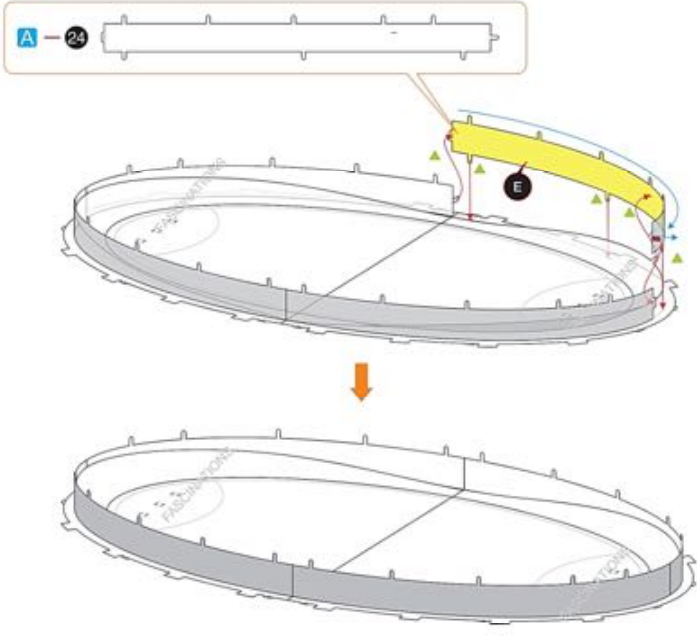
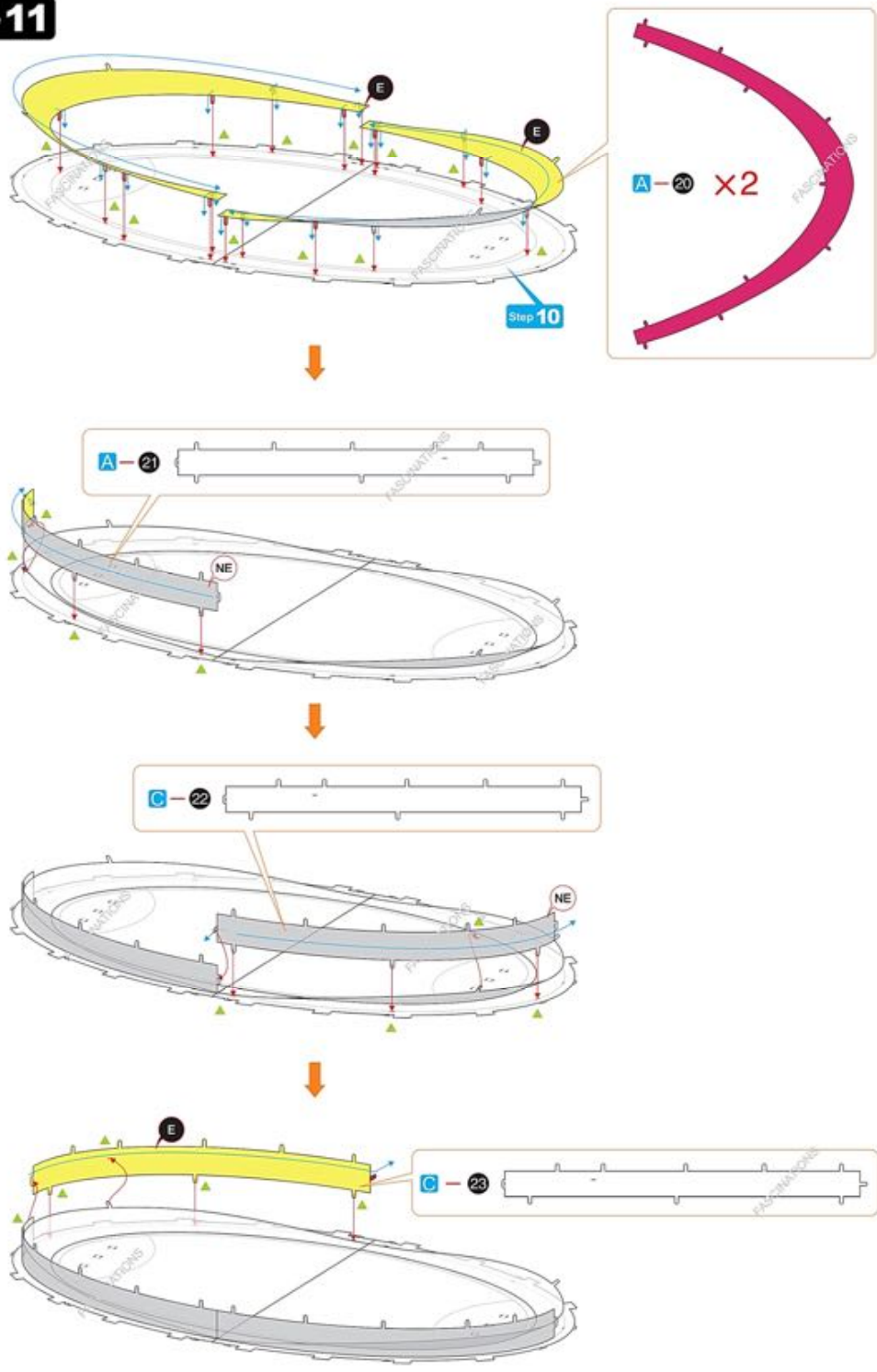
Step 9



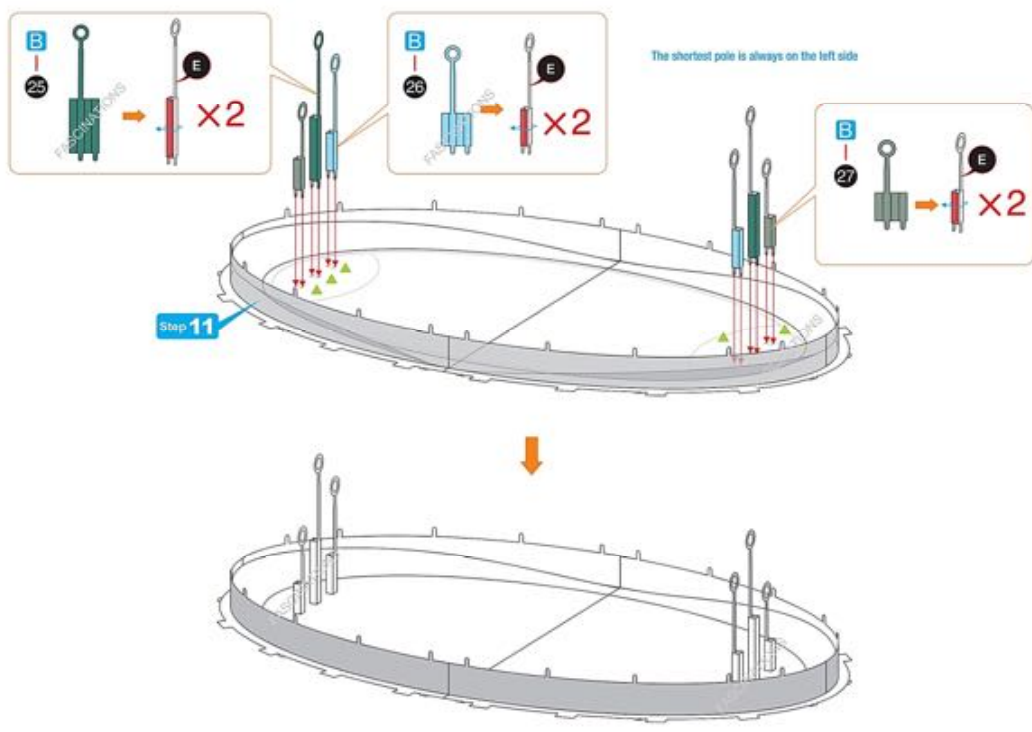
Step 10



Step 11



Step 12



Step 13

