



SPIDER-MAN
MMS474



© MARVEL

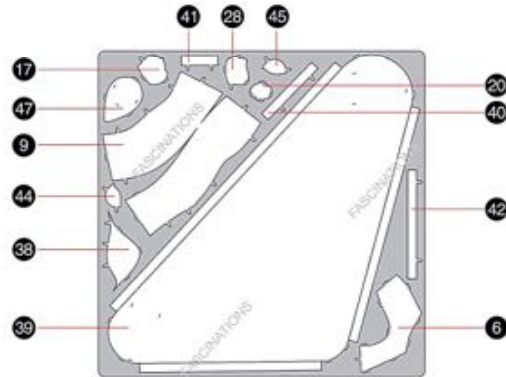


It is highly recommended that you visit www.metalearth.com/360/mms474 to see the completed model before assembling your own



METAL SHEETS

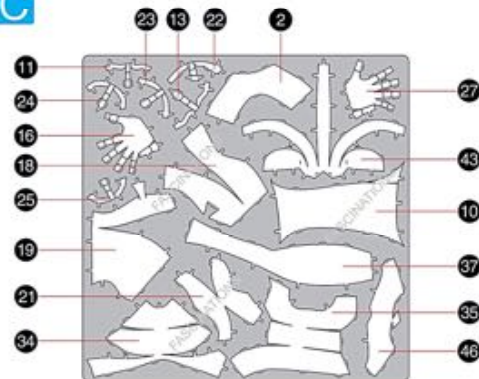
A



B

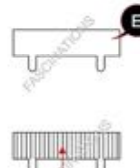


C



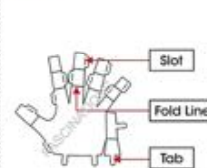
TO CREATE THE BEST CONNECTIONS

A-41



Consider these engraved stripes as supporting features for the bend

C-27



Legends:

E Engraved/ Color side

NE Non - engraved/ Silver side

Attention point

Insert tab and bend 90 degrees

Insert tab and twist 90 degrees

Assembly tip:

If needed, slightly twist tabs to hold parts together then untwist and bend them down for a nice finish.



In order to avoid possible injury from sharp edges, please carefully discard the metal sheets after parts have been removed.

Recommended tools:

- Wire cutters: helpful for taking parts from the metal sheets.

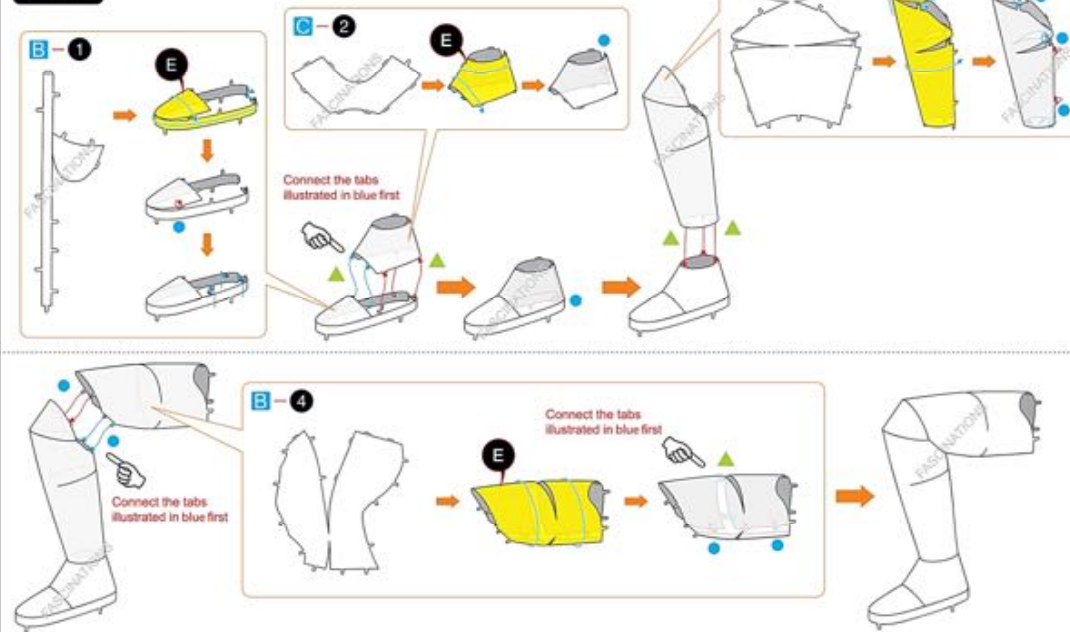


- Tweezers or needle nose pliers: helpful for folding parts, bending and twisting tabs.

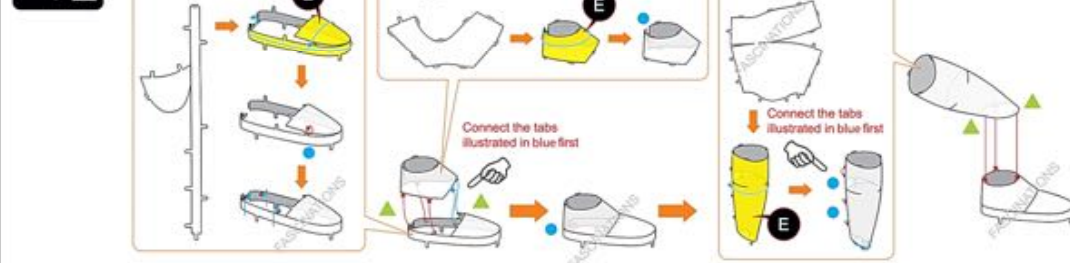


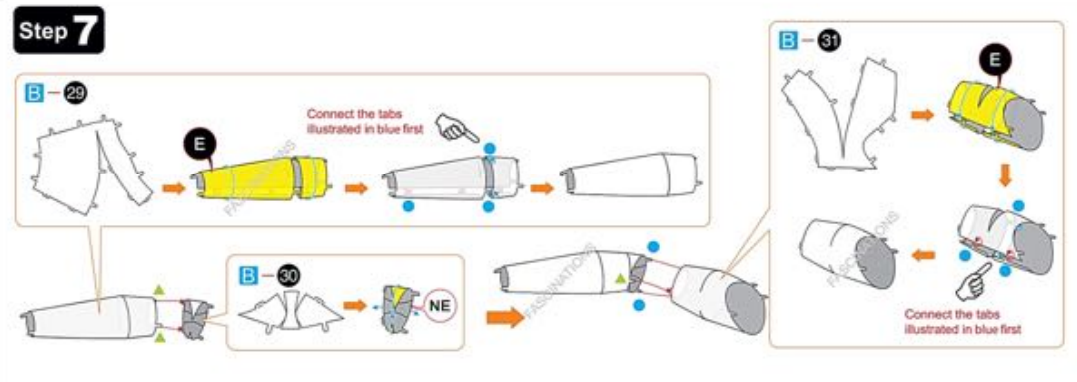
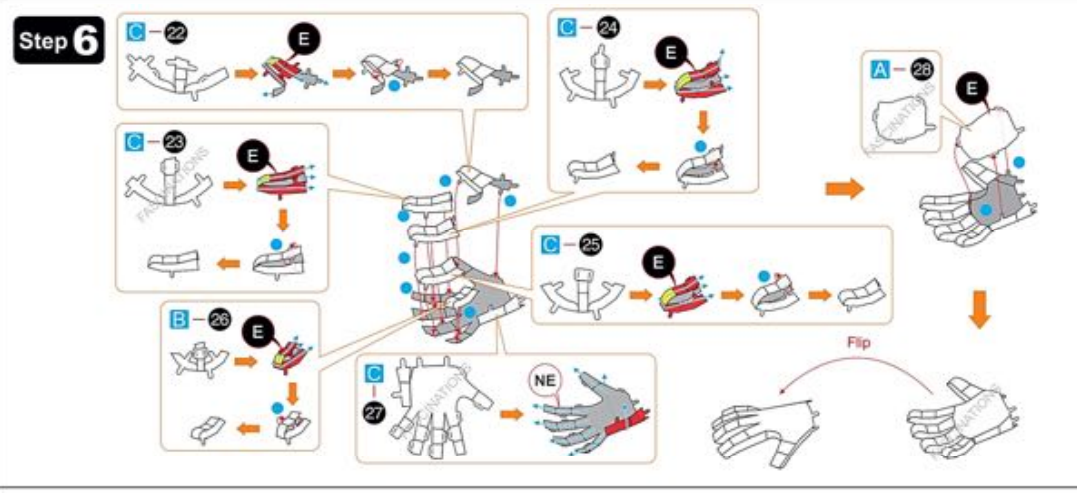
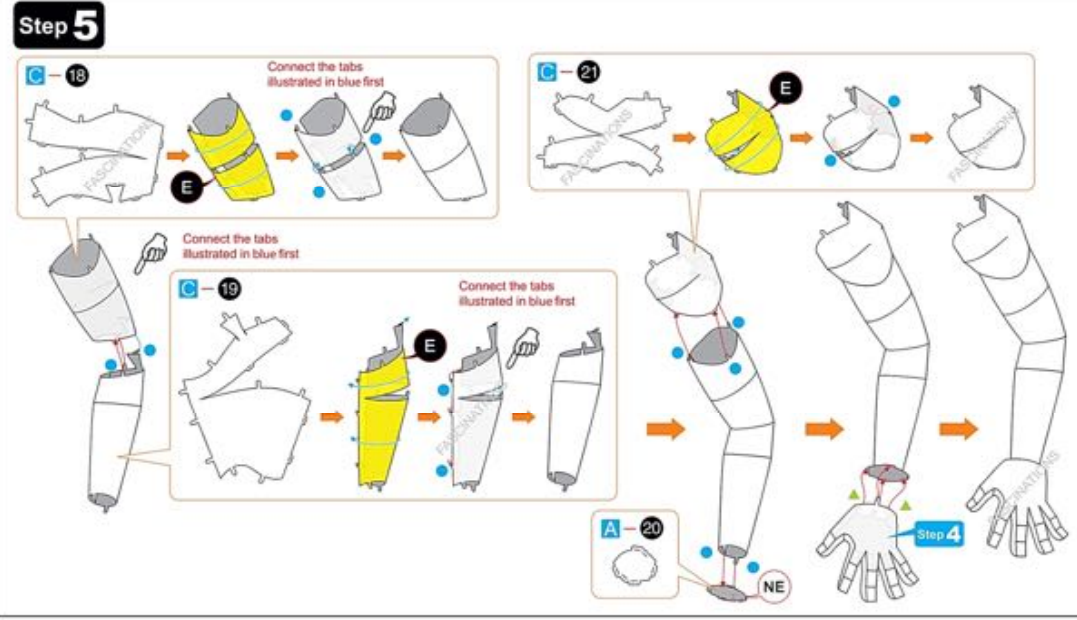
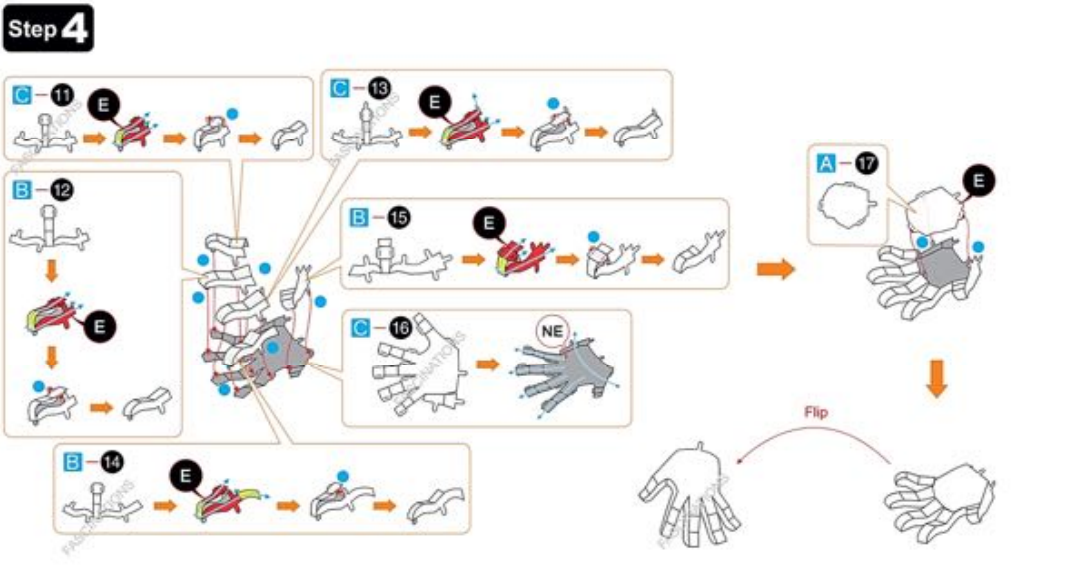
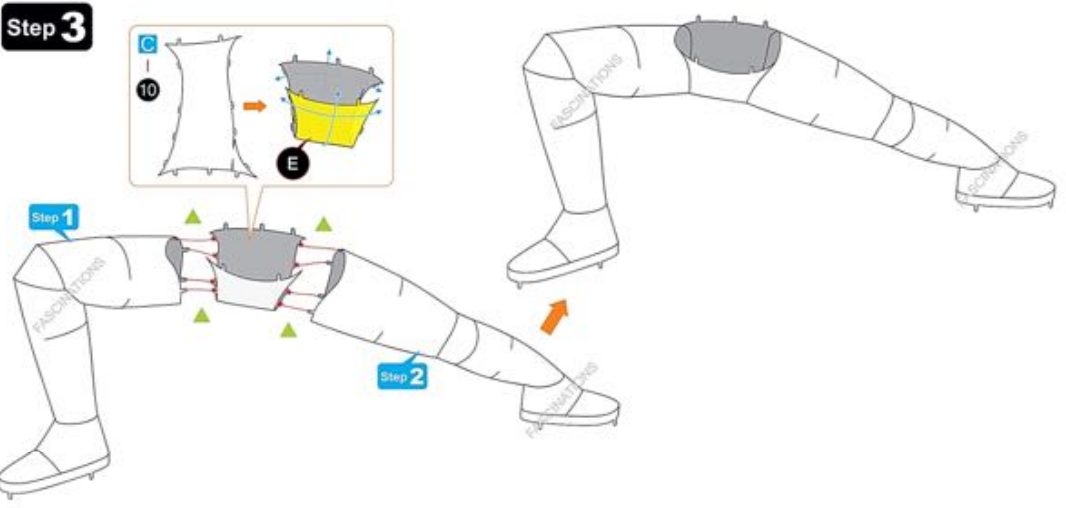
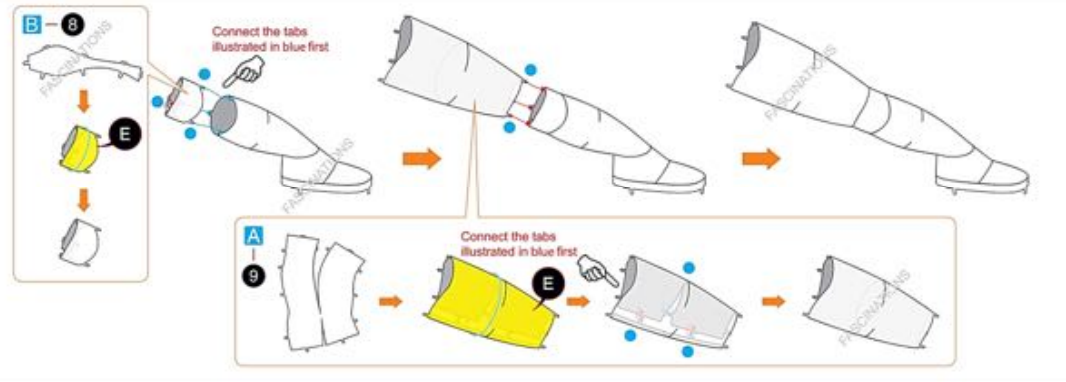
ASSEMBLY STEPS

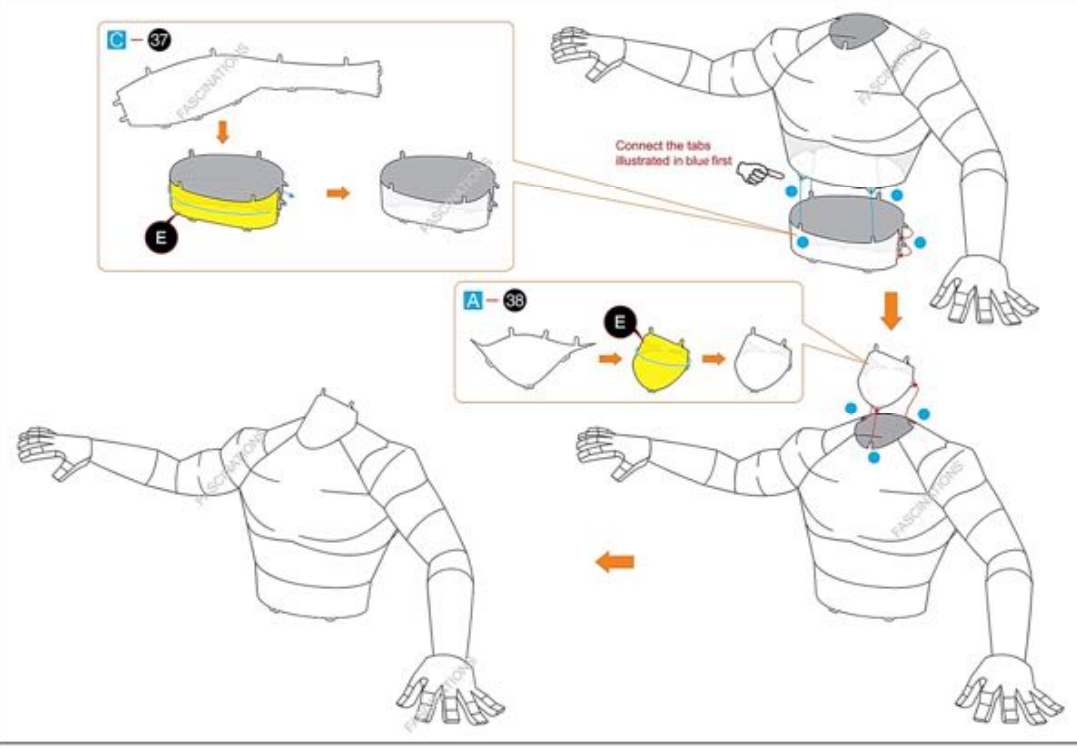
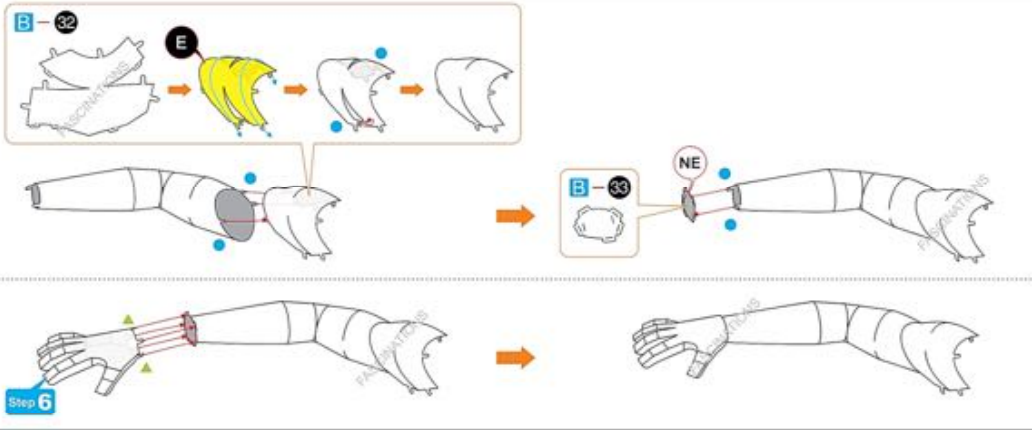
Step 1



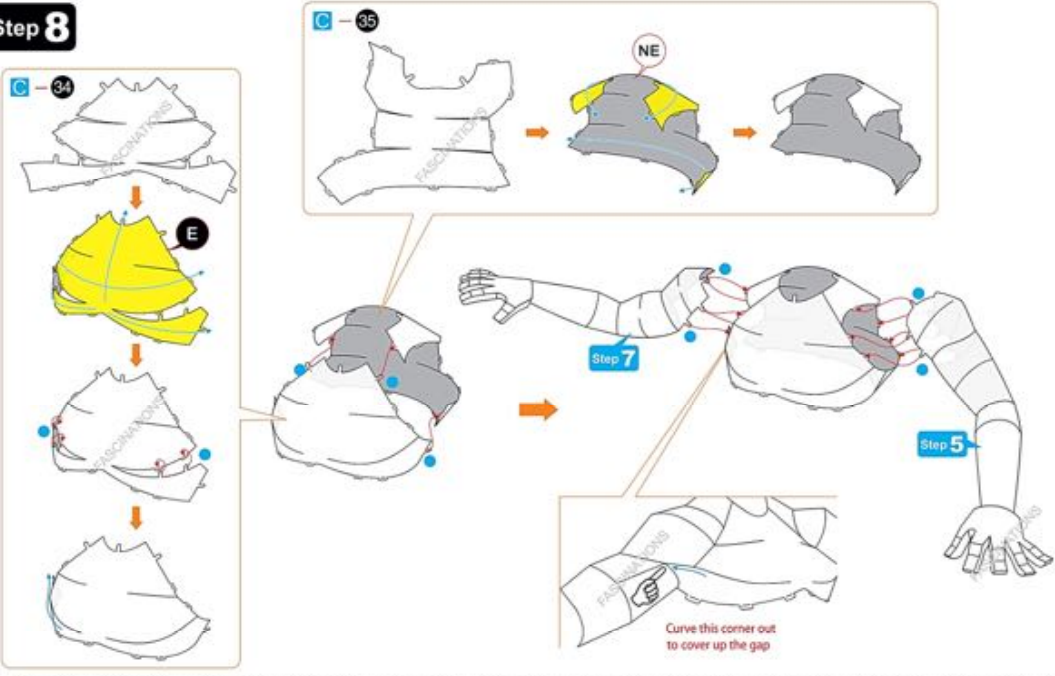
Step 2



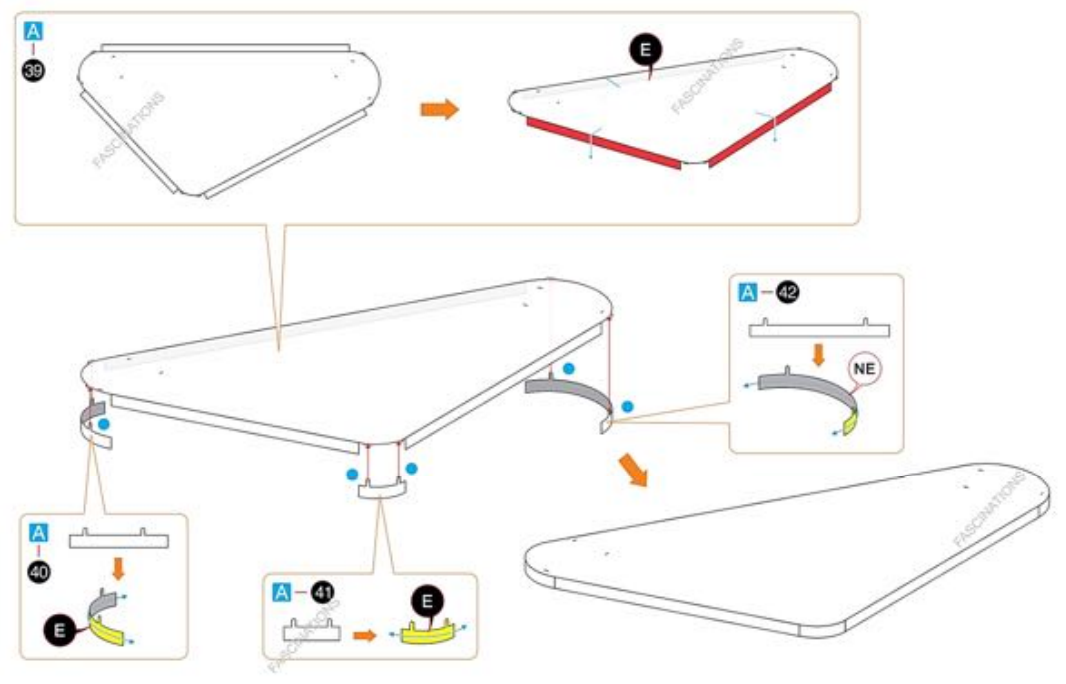




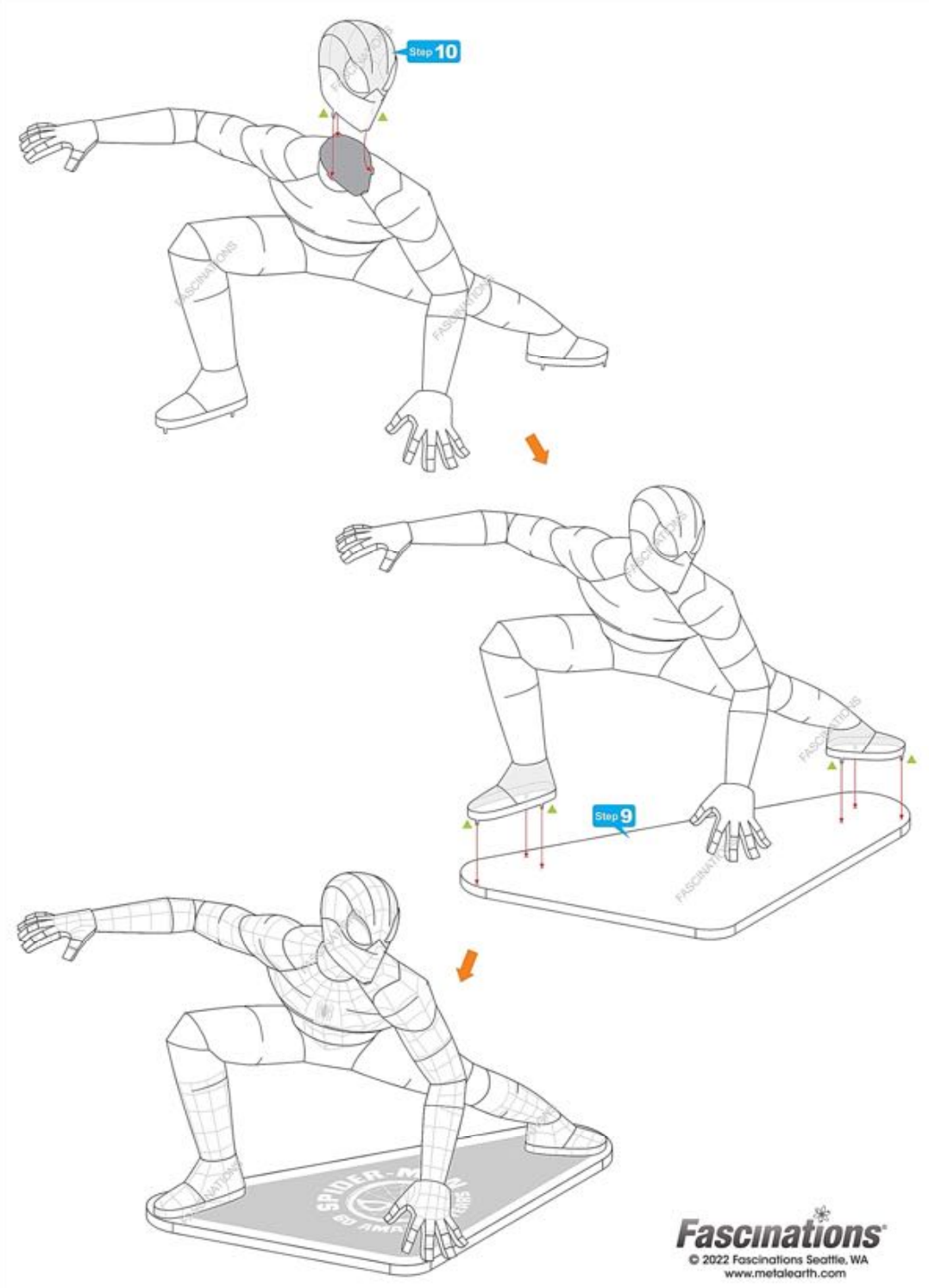
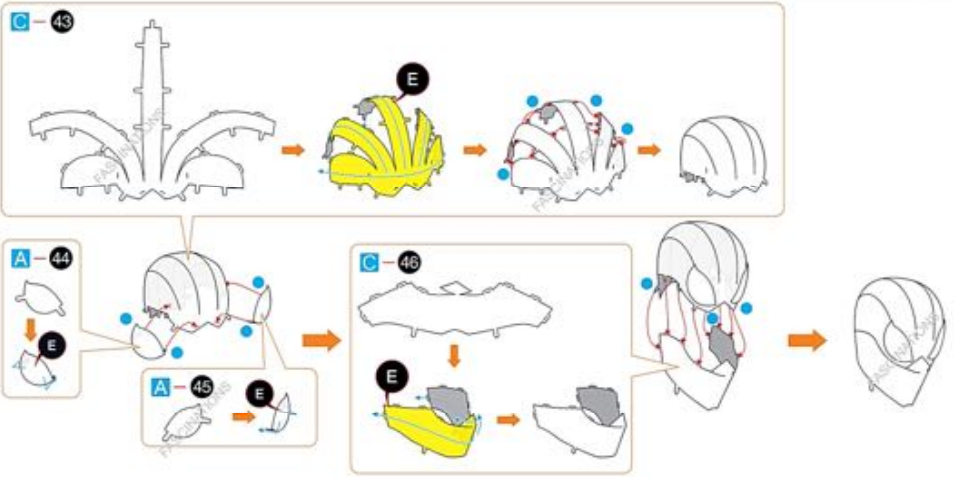
Step 8



Step 9



Step 10



Step 11

