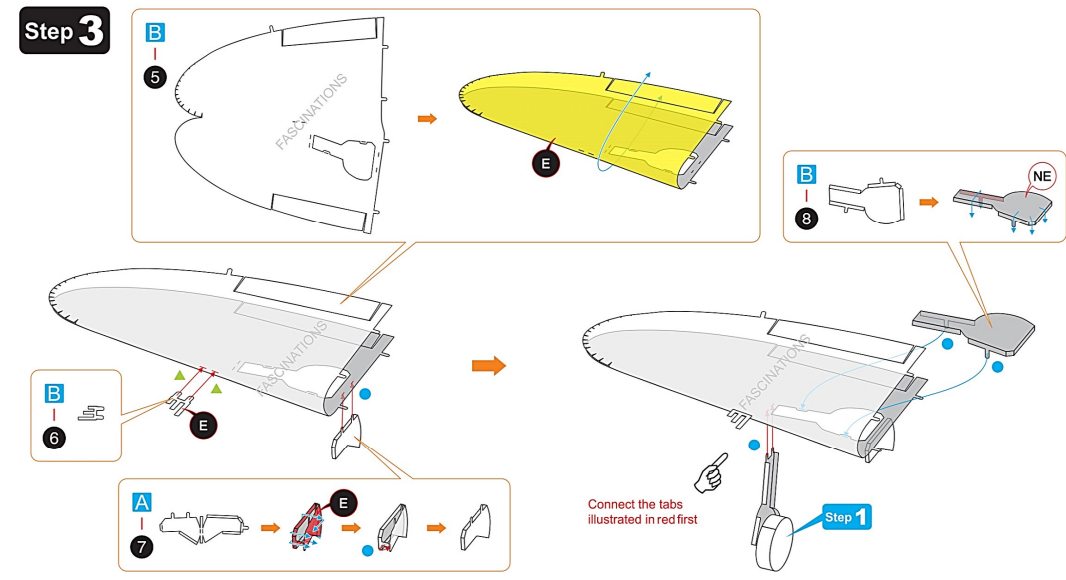
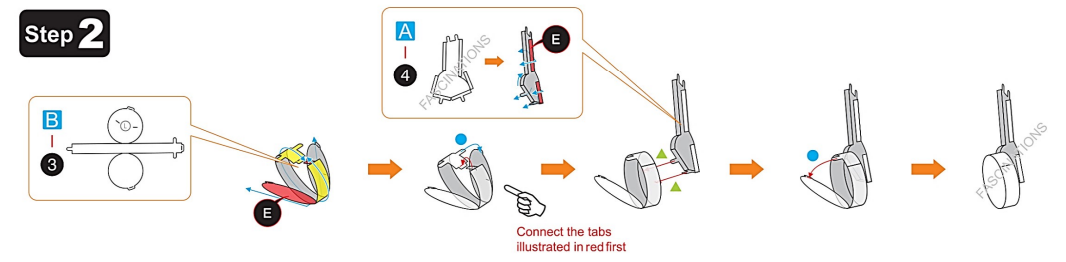
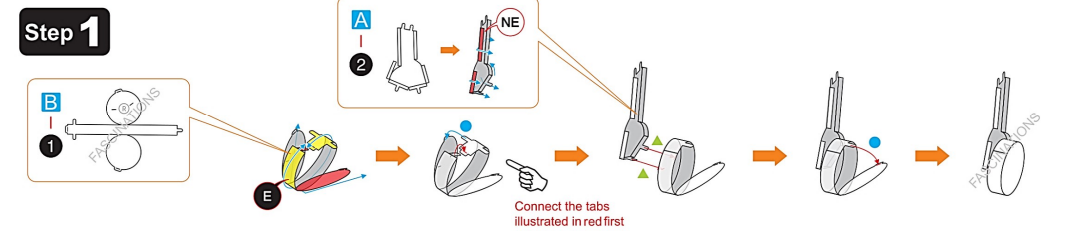


P-47 THUNDERBOLT ME1002

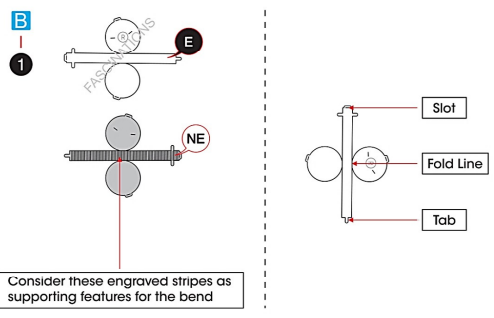
It is highly recommended that you visit www.metalearth.com/360/ME1002 to see the completed model before assembling your own



ASSEMBLY FLOW CHART

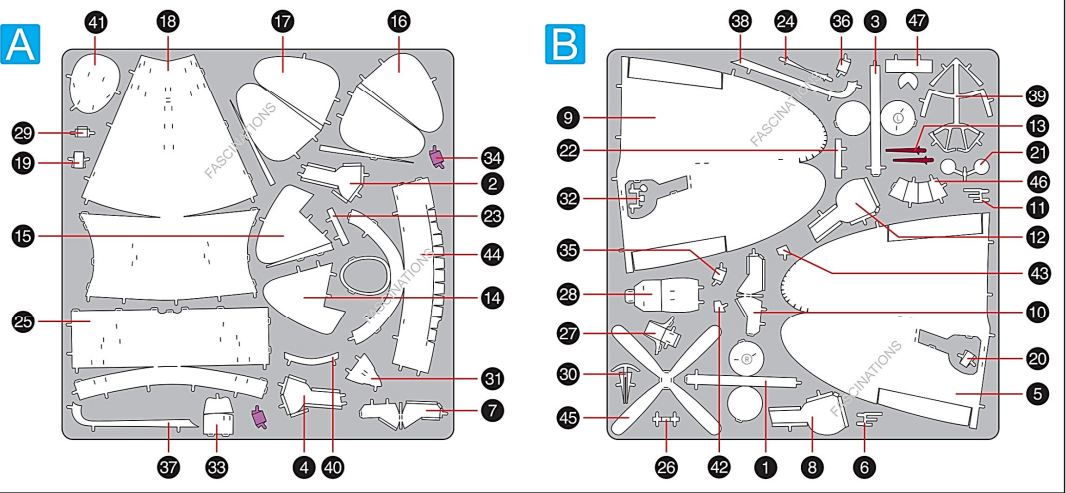


TO CREATE THE BEST CONNECTIONS



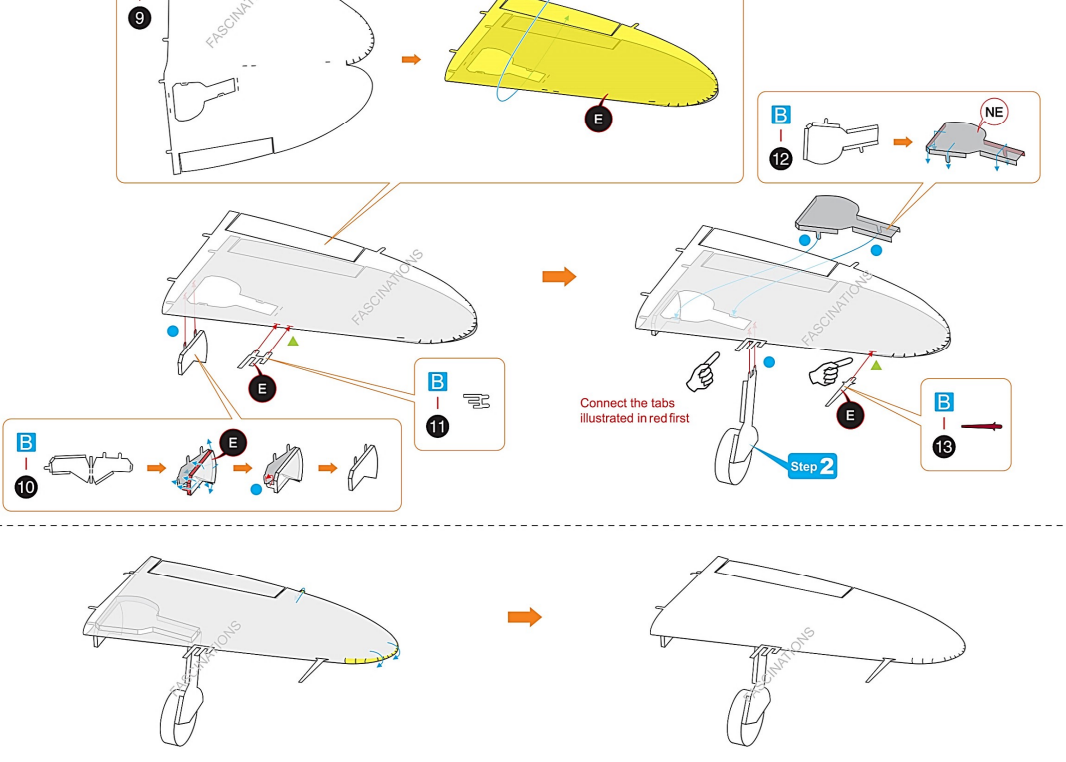
- Legends:**
- E** Engraved/ Color side
 - NE** Non - engraved/ Silver side
 - Attention point
 - Insert tab and bend 90 degrees
 - Insert tab and twist 90 degrees
- Recommended tools:**
- Wire cutters: helpful for taking parts from the metal sheets.
 - Tweezers or needle nose pliers: helpful for folding parts, bending and twisting tabs.
- Assembly tip:**
- If needed, slightly twist tabs to hold parts together then untwist and bend them down for a nice finish.
- Yellow areas should be curled
 - Red areas should be folded

METAL SHEETS

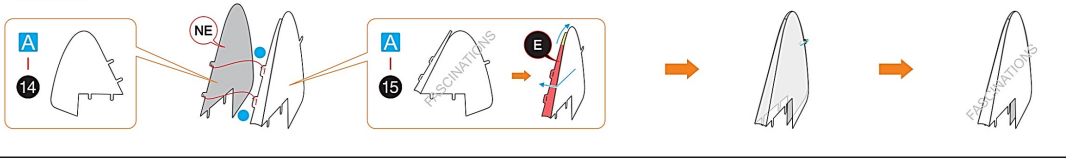


! In order to avoid possible injury from sharp edges, please carefully discard the metal sheets after parts have been removed.

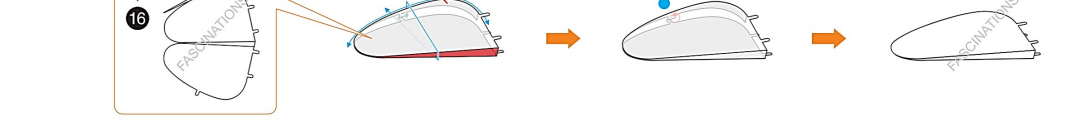
Step 4



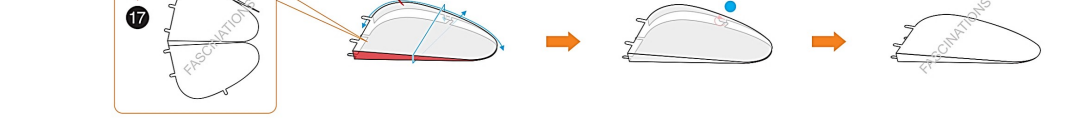
Step 5



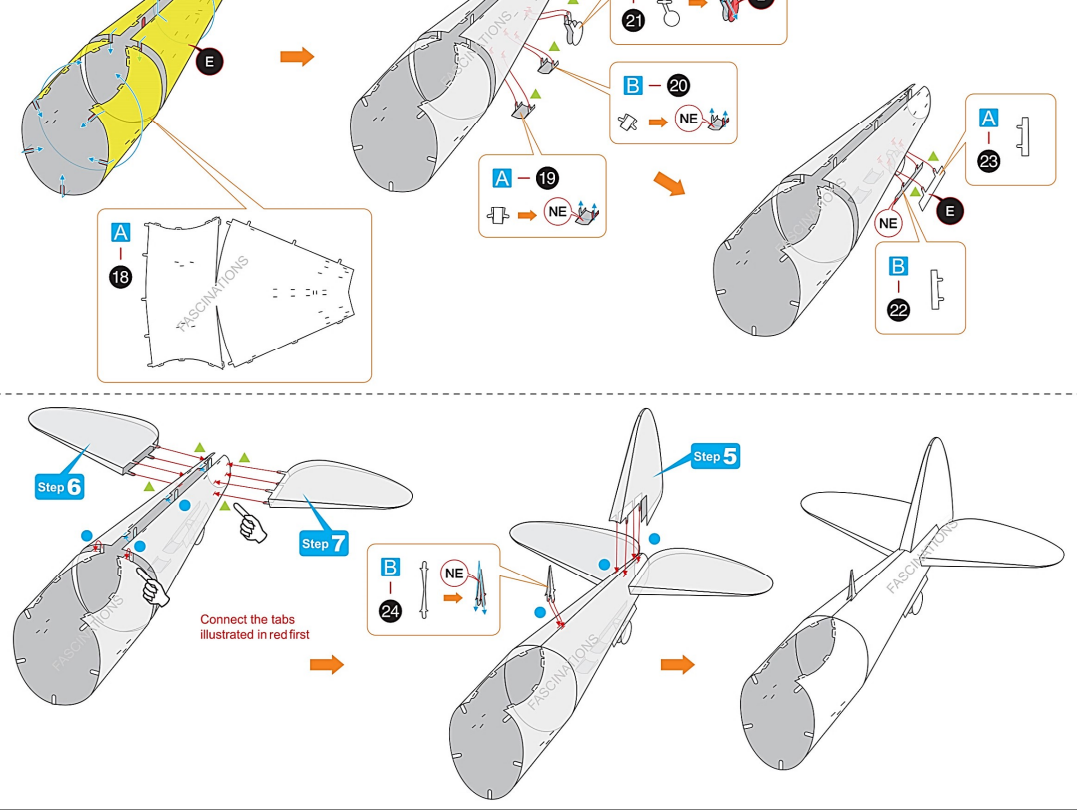
Step 6



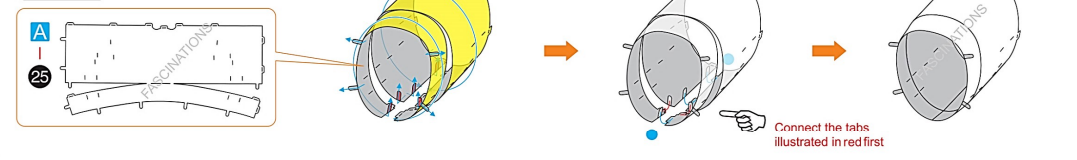
Step 7



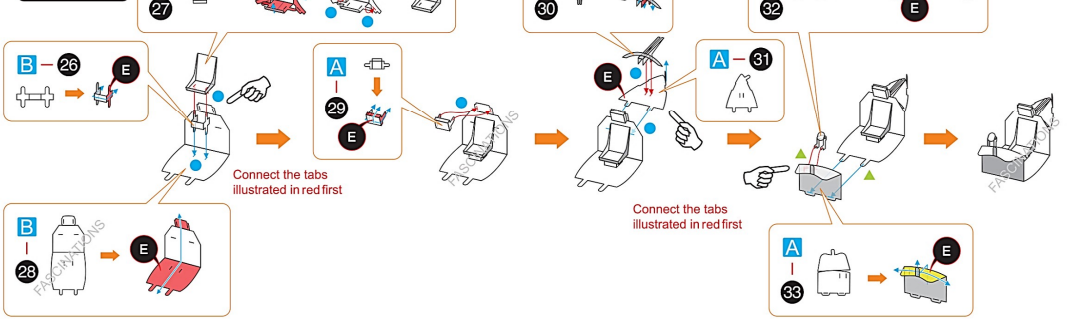
Step 8



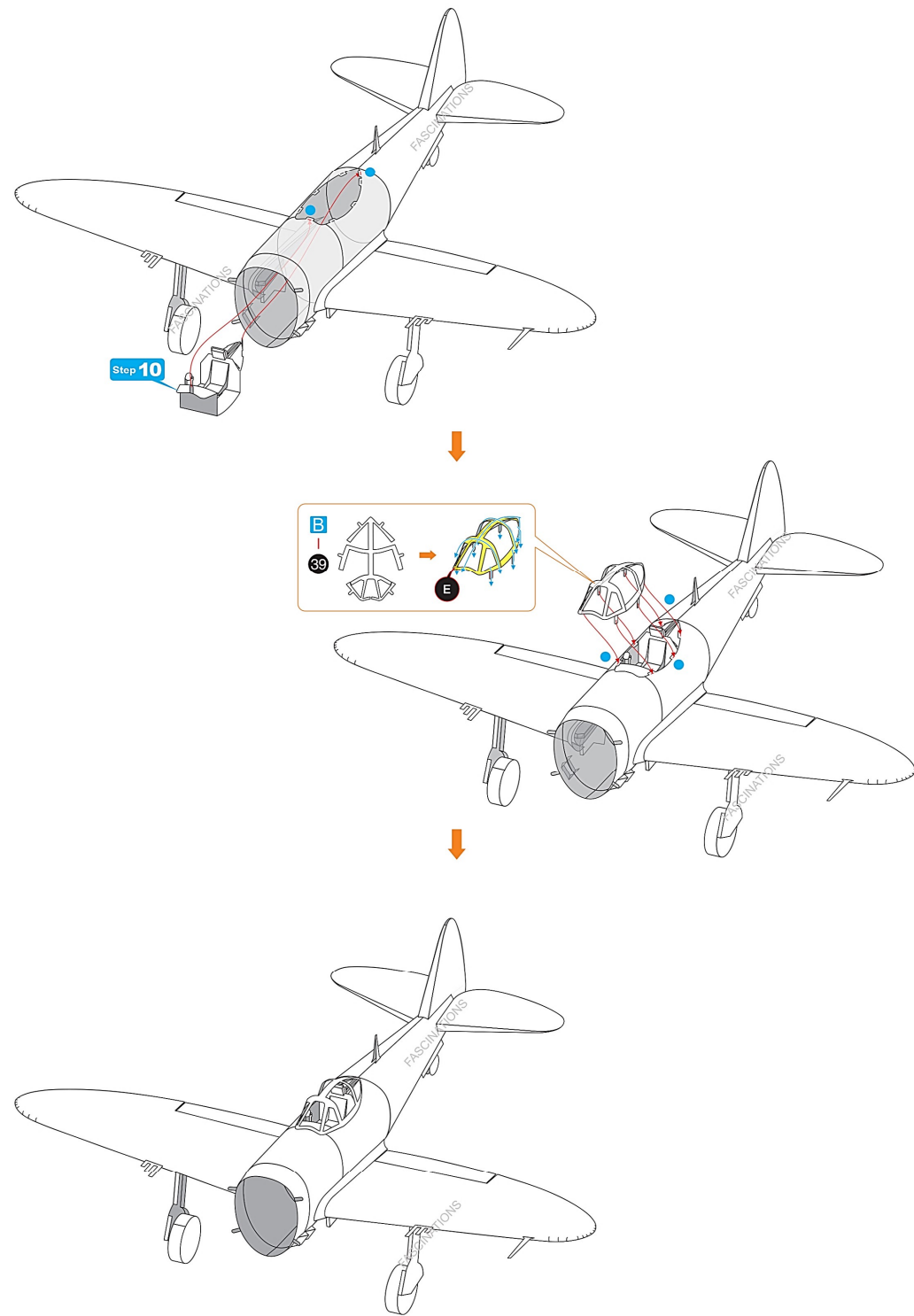
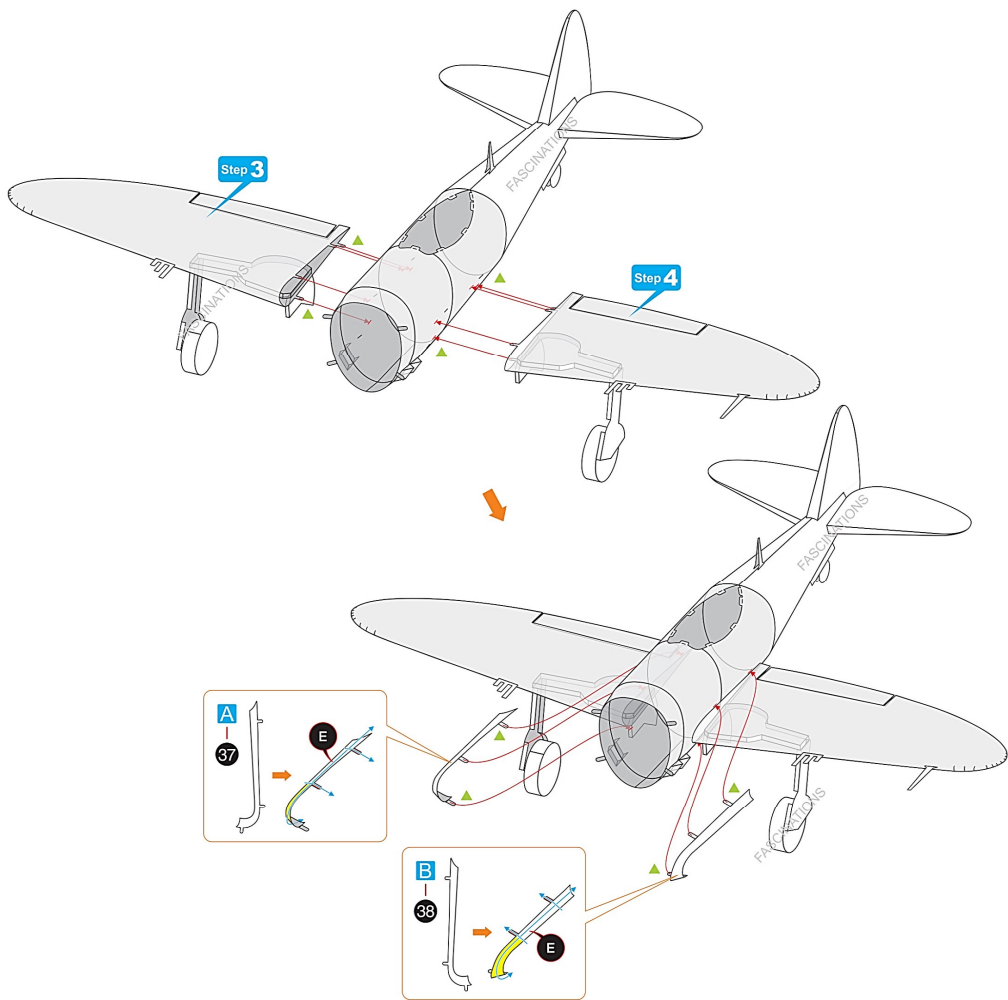
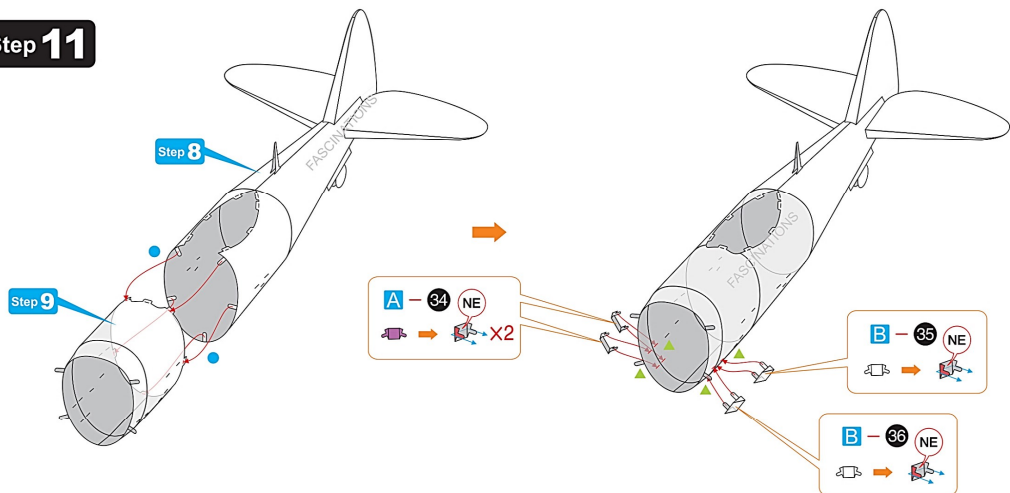
Step 9



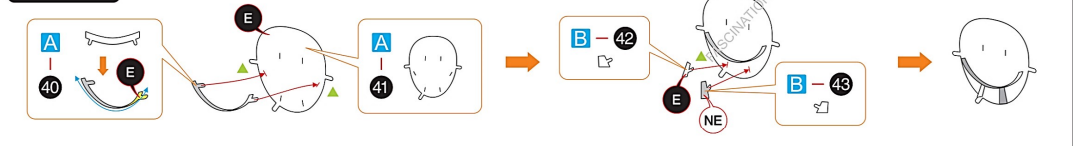
Step 10



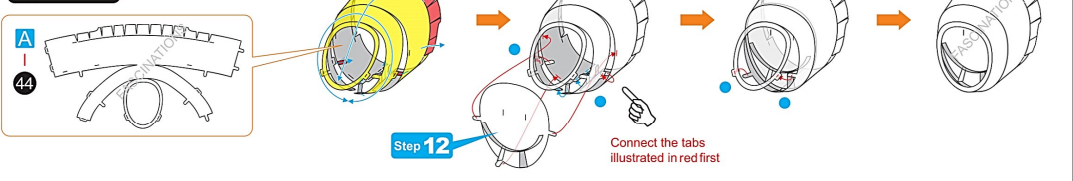
Step 11



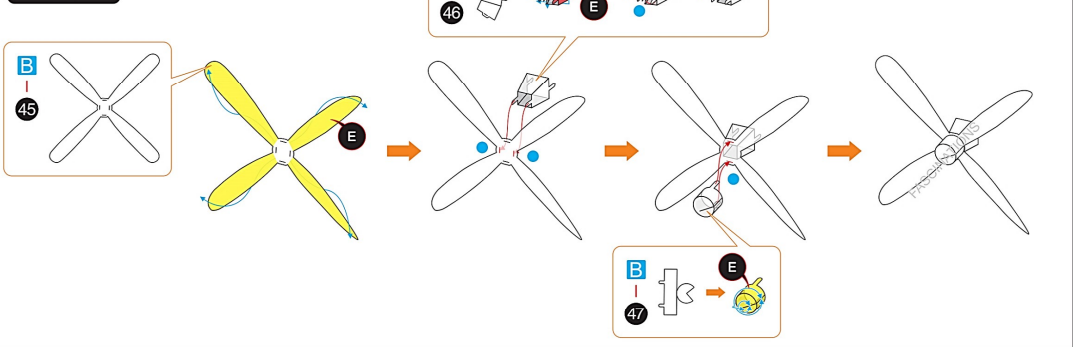
Step 12



Step 13



Step 14



Step 15

