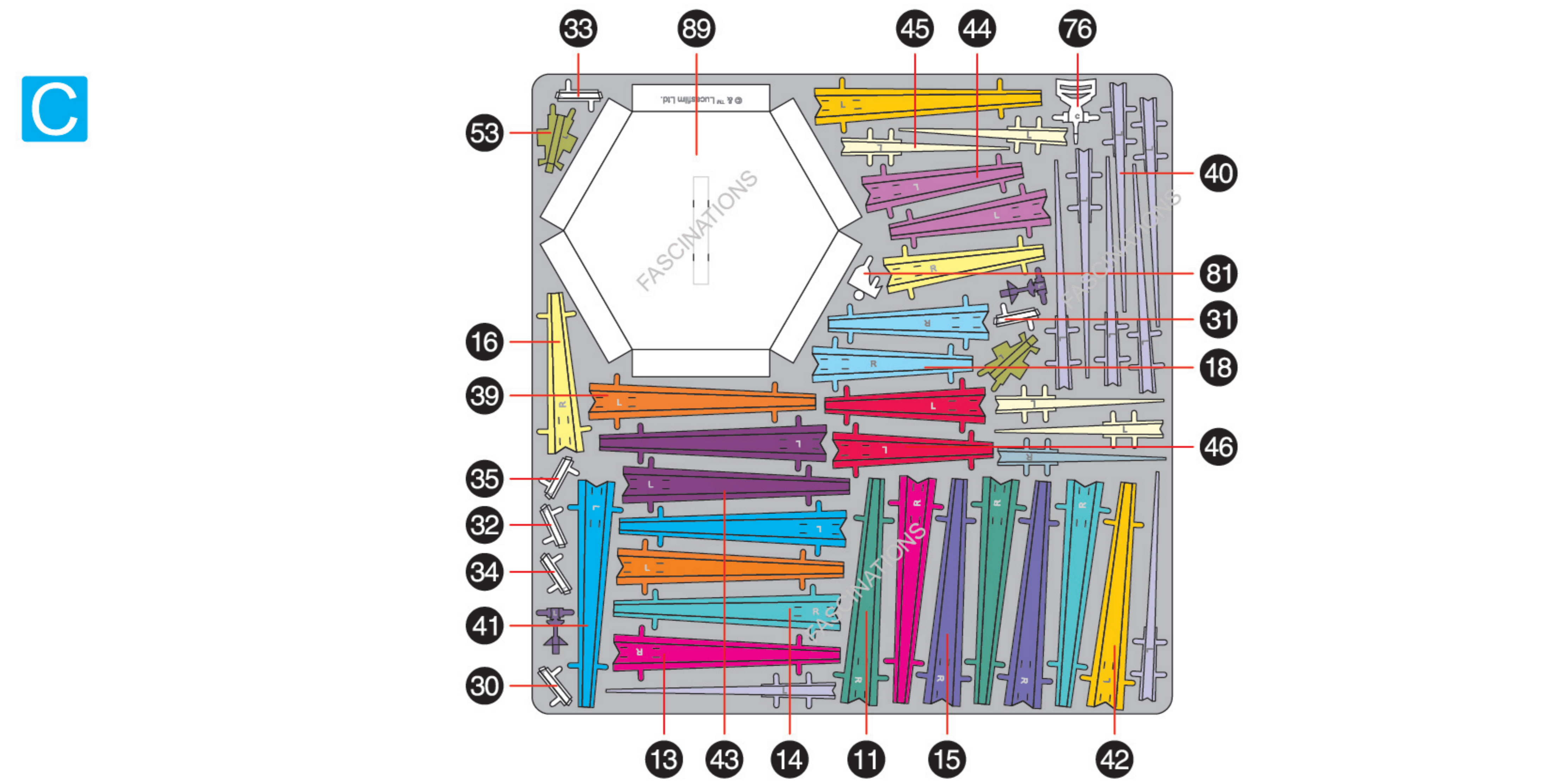
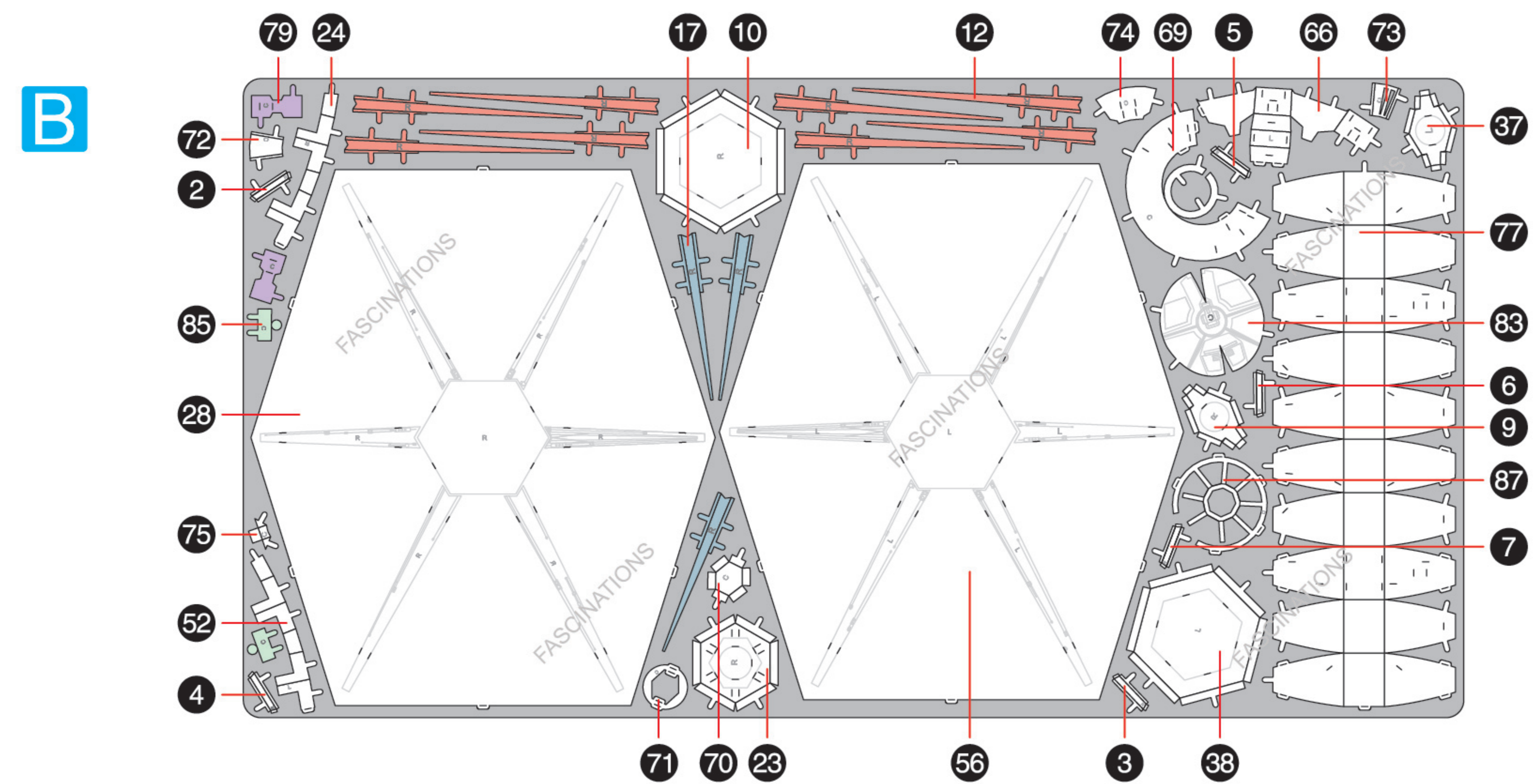
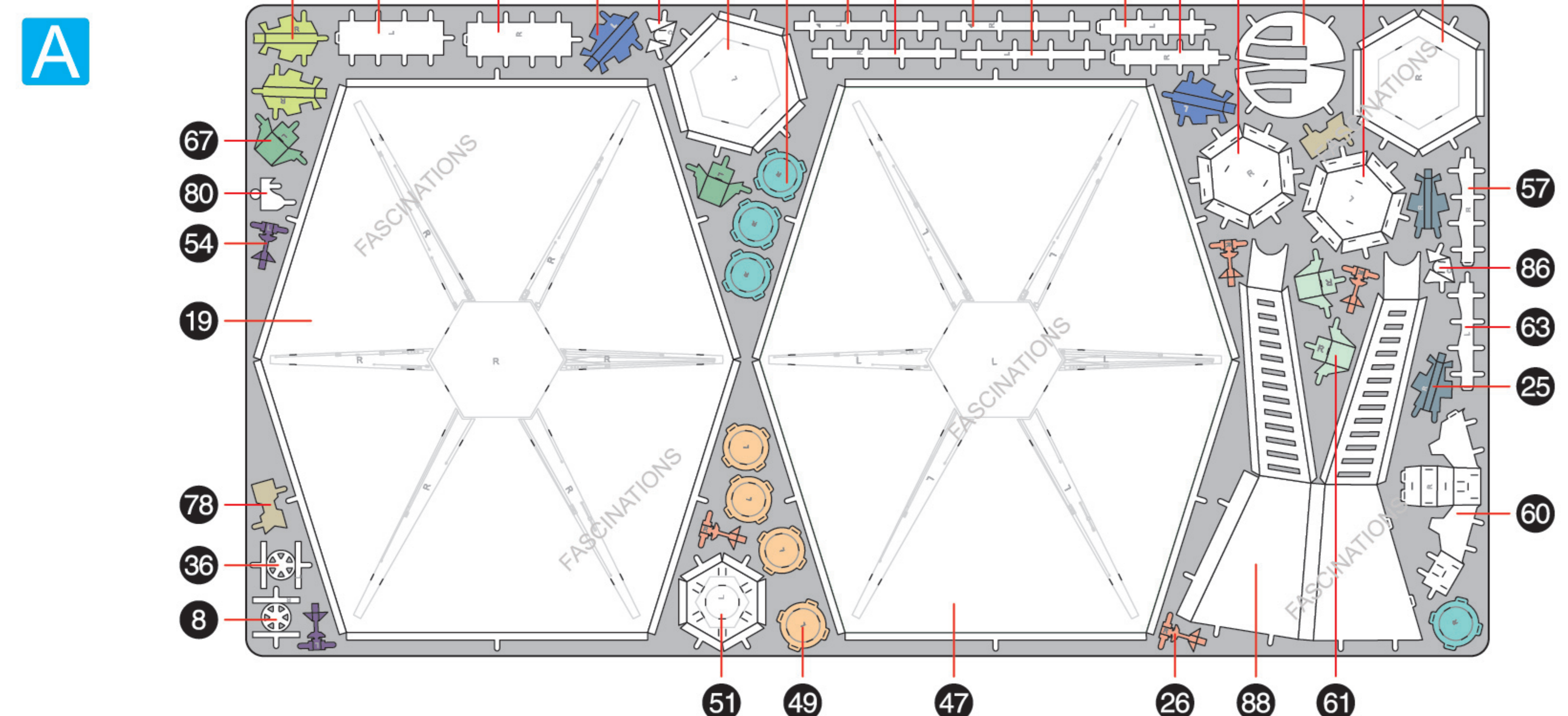


METAL SHEETS

Parts with same color are duplicates



Metal Earth

Premium Series

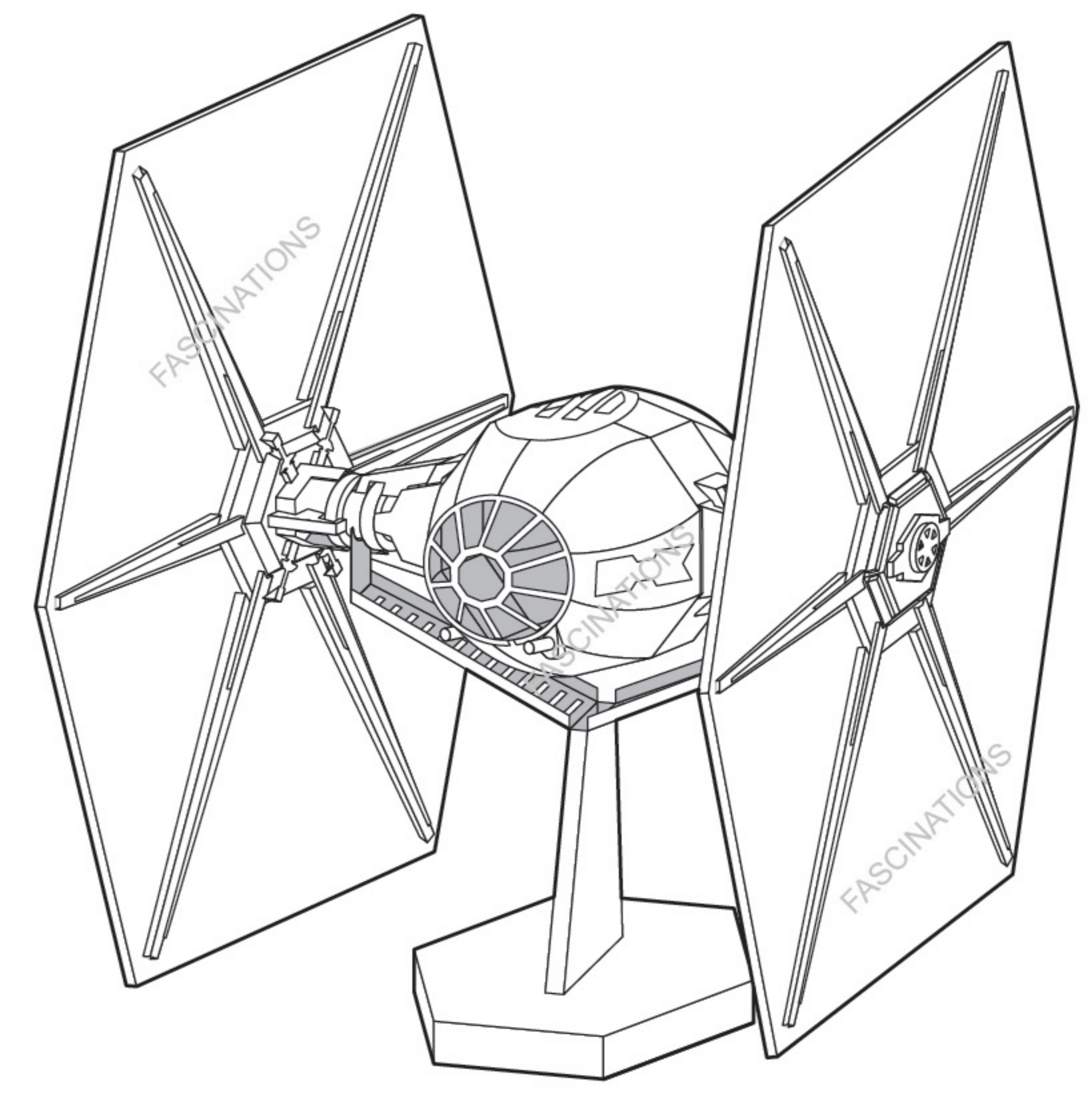


It is highly recommended that you visit www.metalearth.com/360/ICX220 to see the completed model before assembling your own

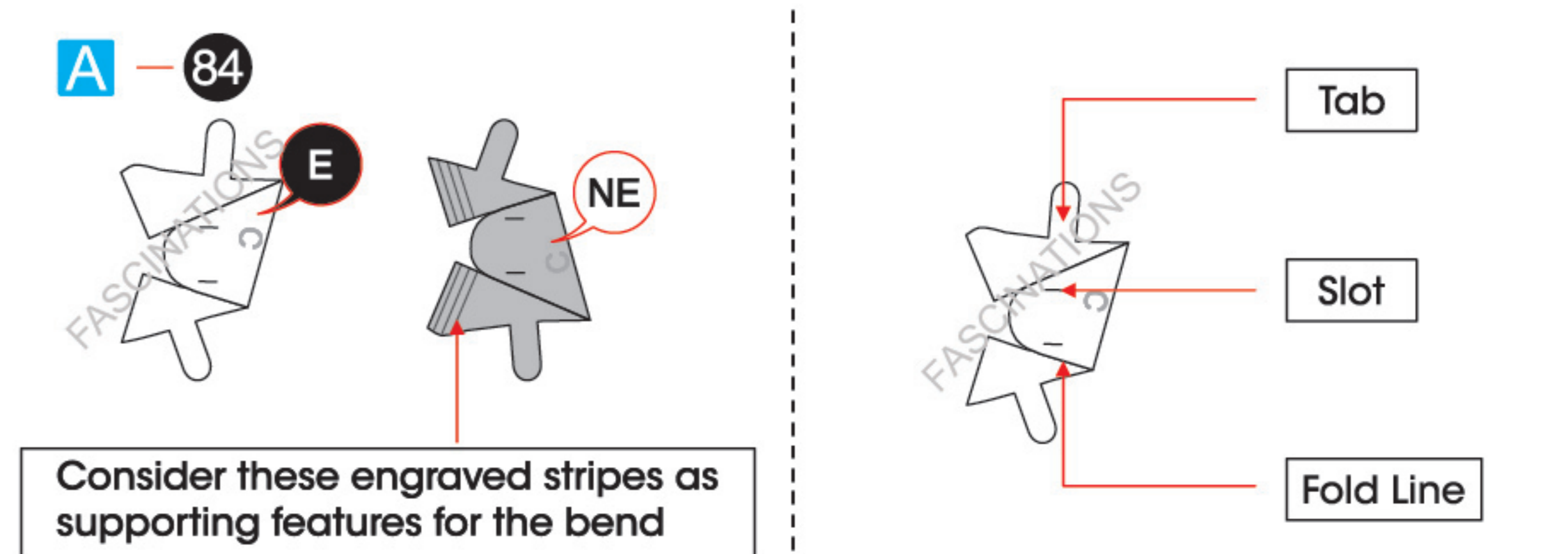
STAR WARS

www.starwars.com
© & ™ Lucasfilm Ltd.

ICX220 TIE FIGHTER™



TO CREATE THE BEST CONNECTIONS



Legends:

- E** Engraved/ Color side
- NE** Non - engraved/ Silver side
- Attention point
- Insert tab and bend 90 degrees
- Insert tab and twist 90 degrees

Recommended tools:

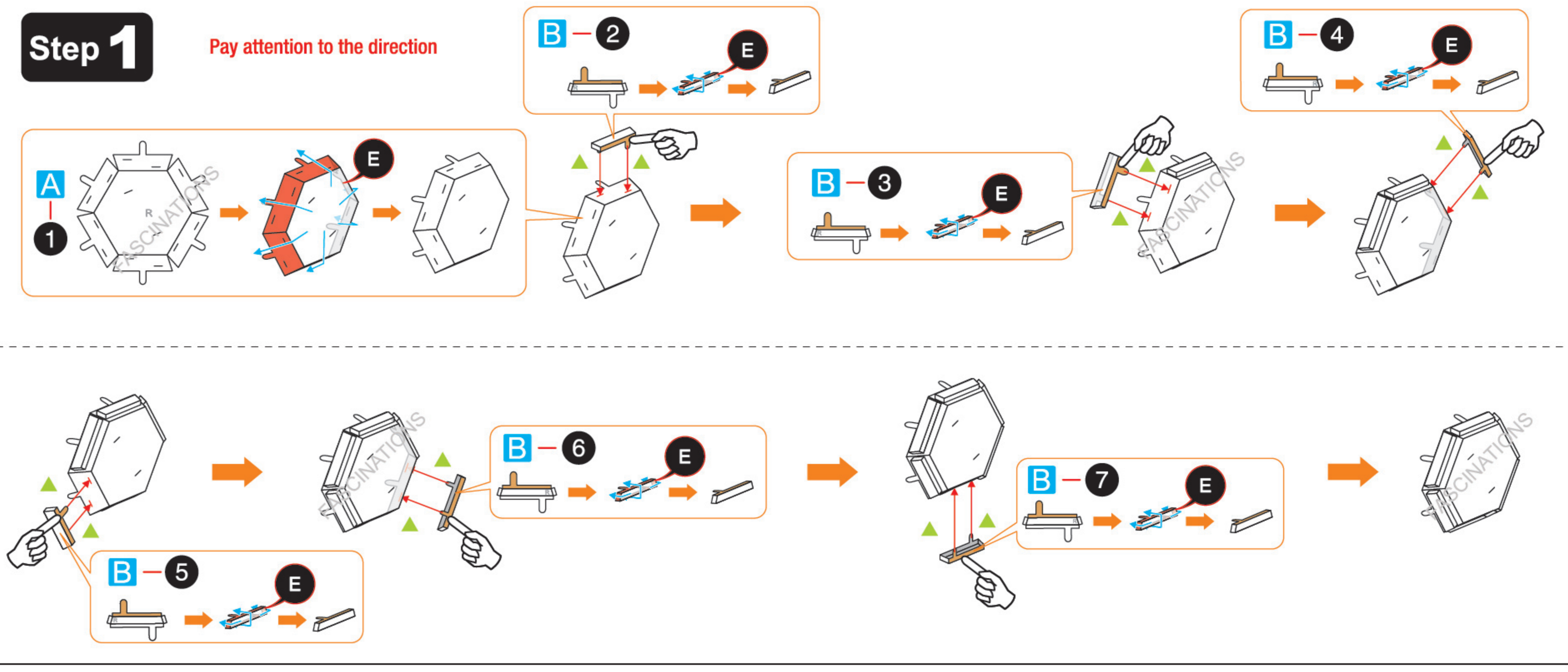
- Wire cutters: helpful for taking parts from the metal sheets.
- Tweezers or needle nose pliers: helpful for folding parts, bending and twisting tabs.

Assembly tip:

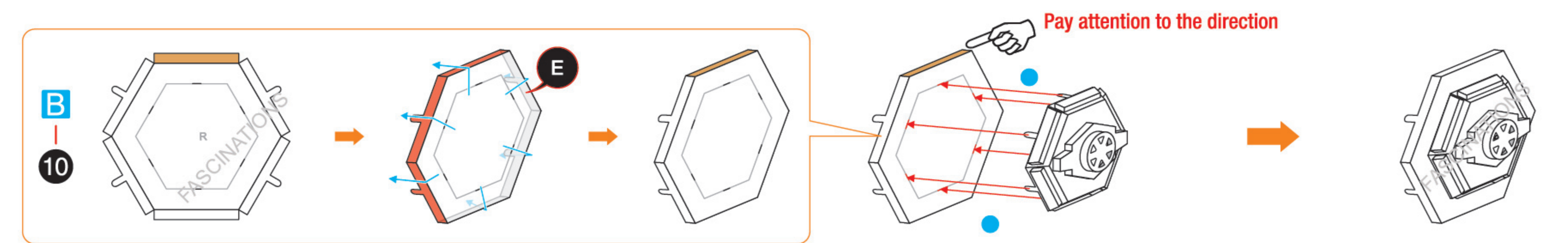
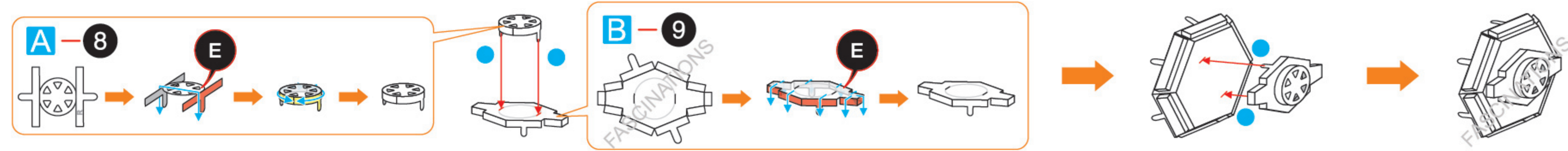
If needed, slightly twist tabs to hold parts together then untwist and bend them down for a nice finish.

- Yellow areas should be curled
- Red areas should be folded

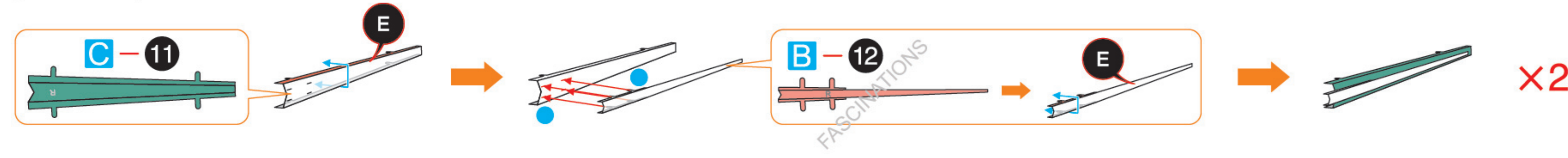
ASSEMBLY STEPS



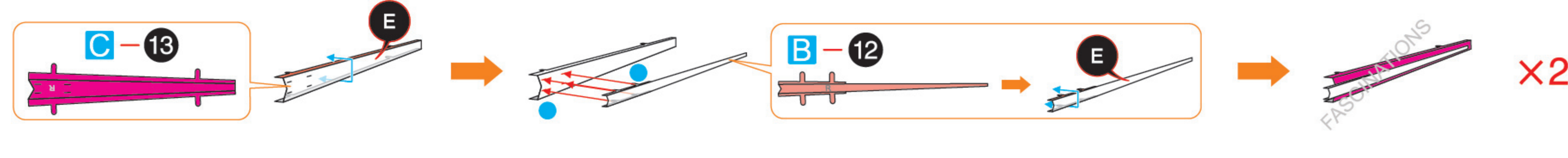
In order to avoid possible injury from sharp edges, please carefully discard the metal sheets after parts have been removed.



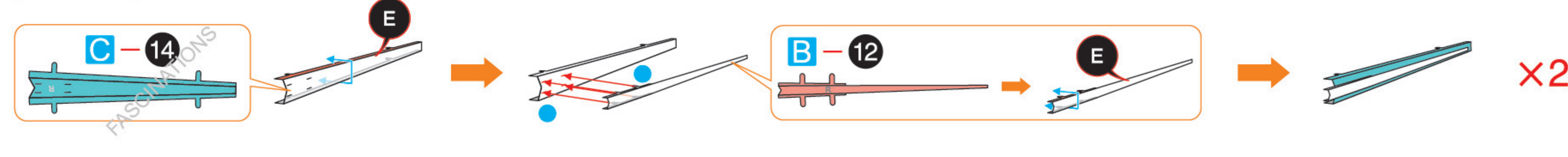
Step 2



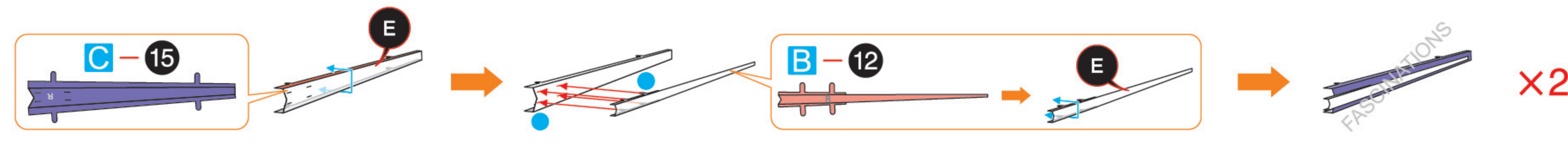
Step 3



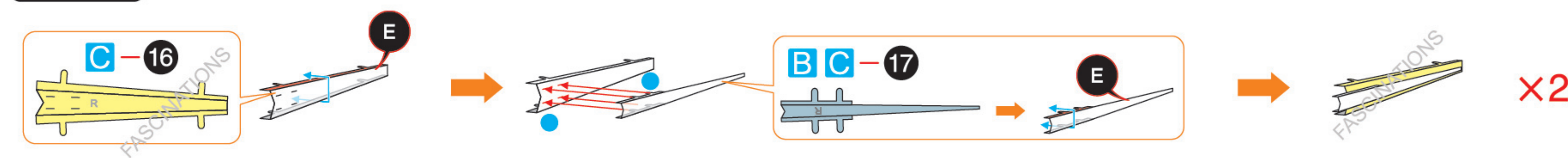
Step 4



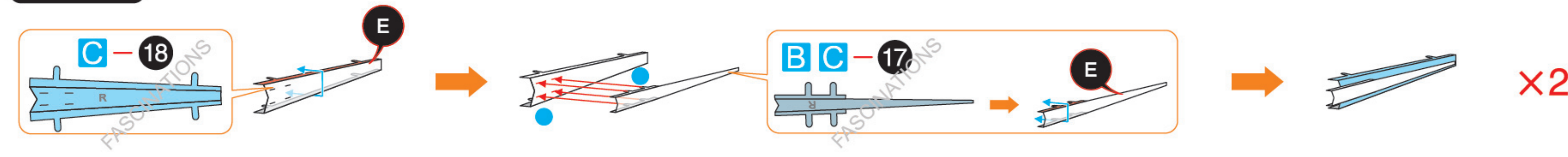
Step 5



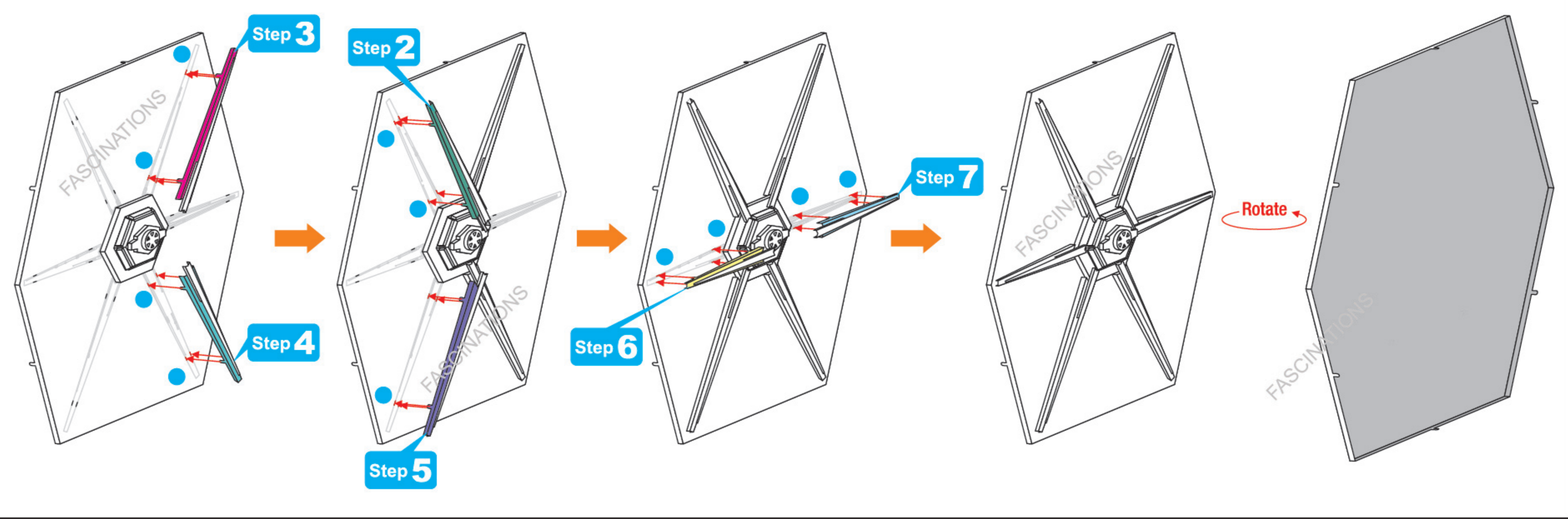
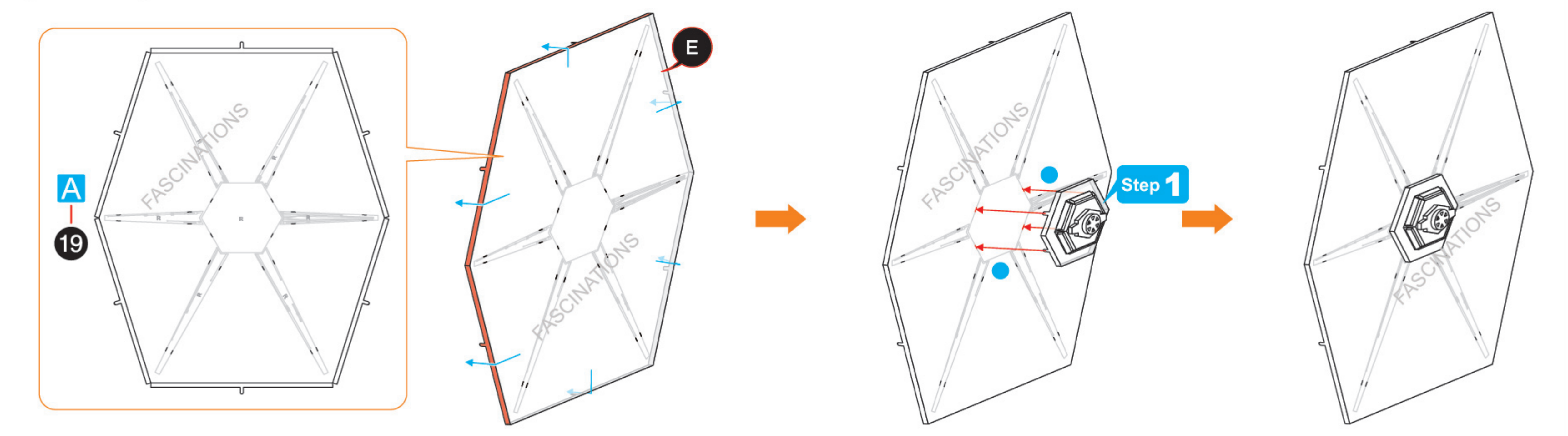
Step 6



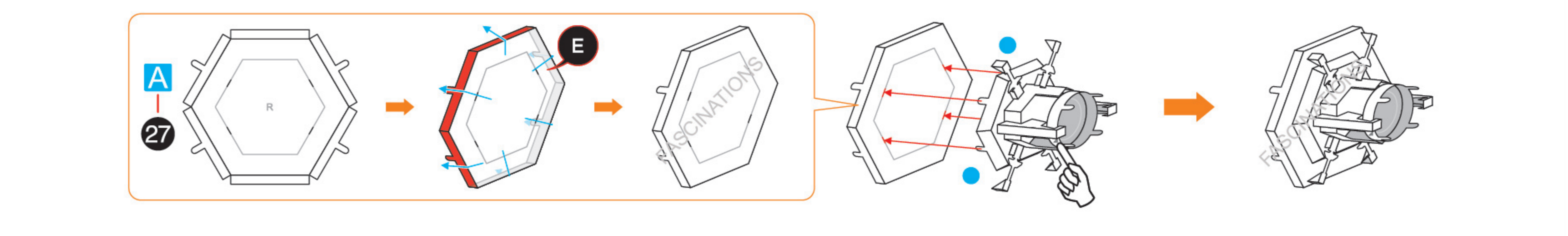
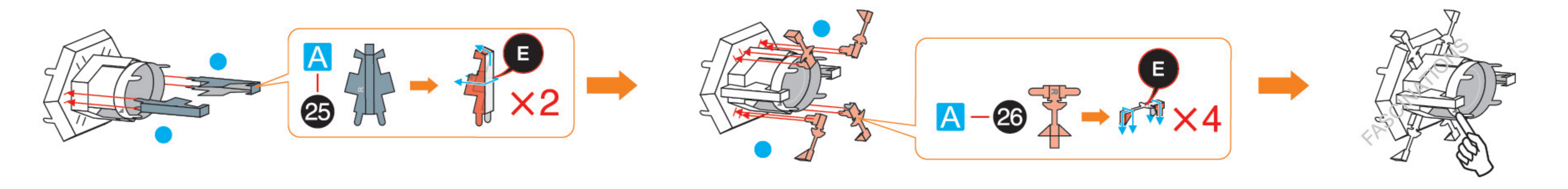
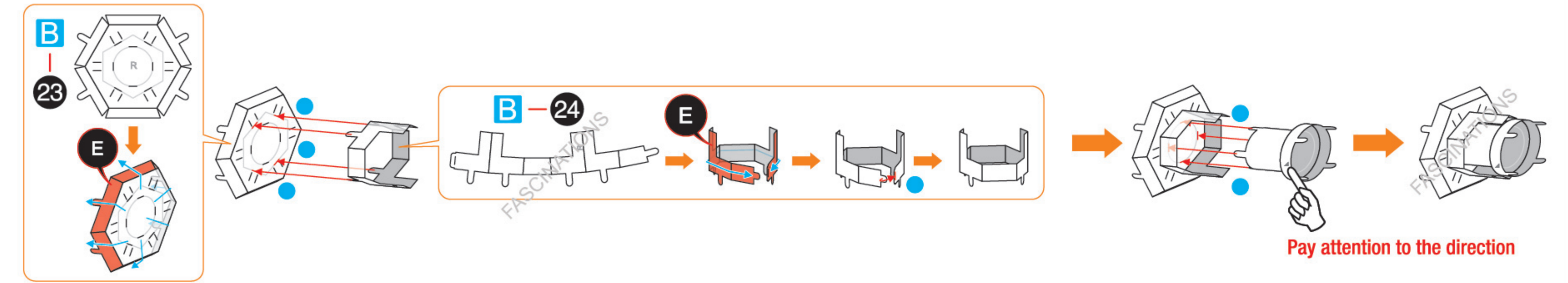
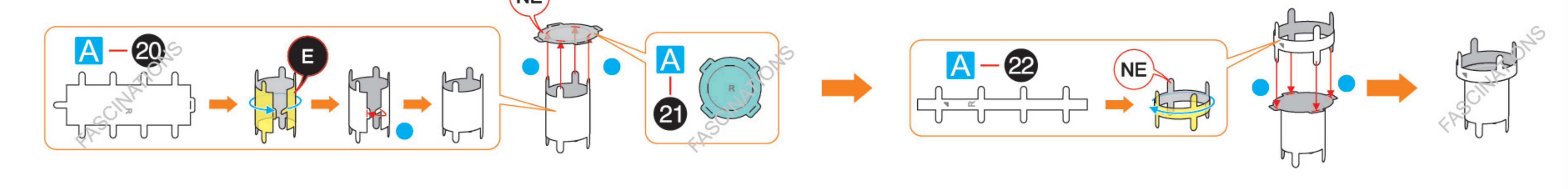
Step 7



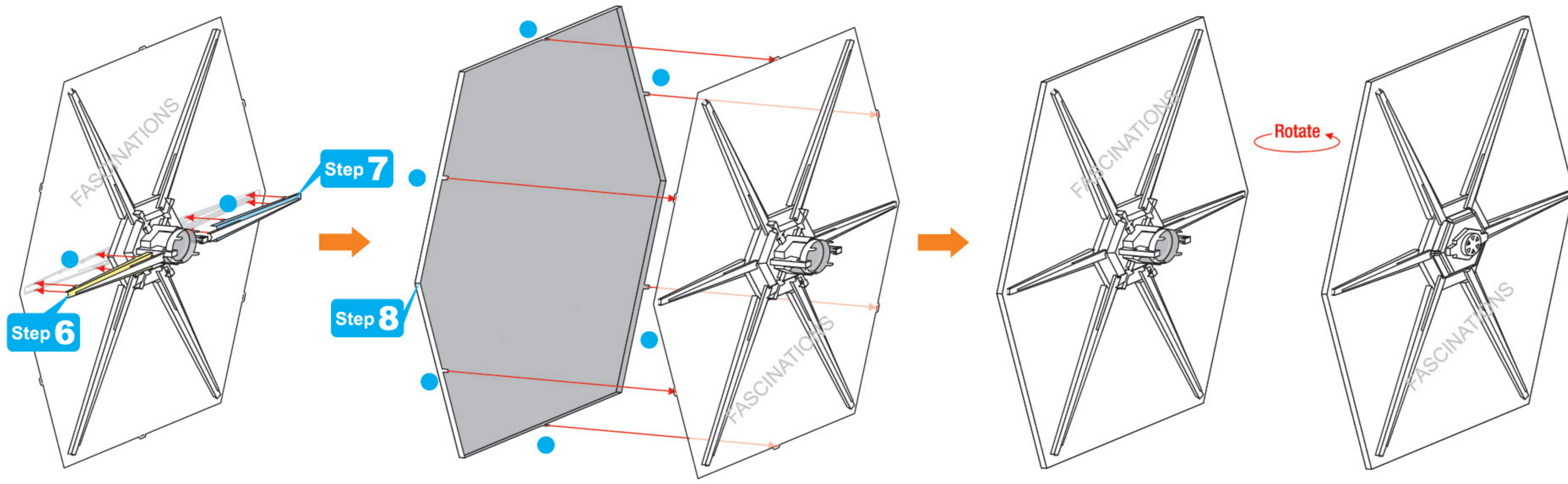
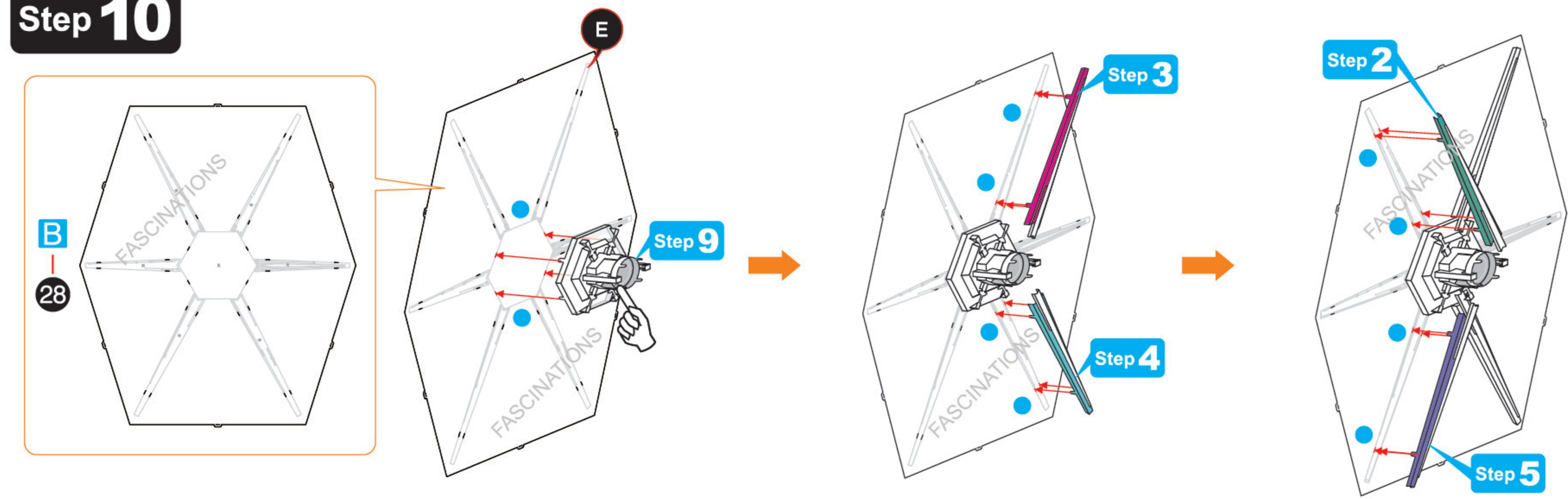
Step 8



Step 9

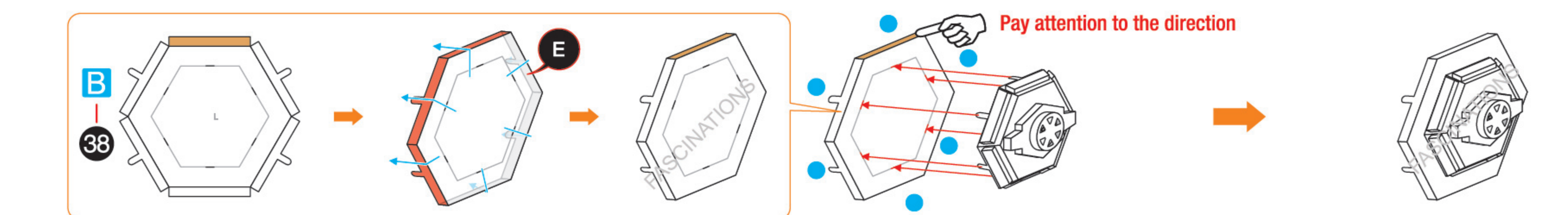
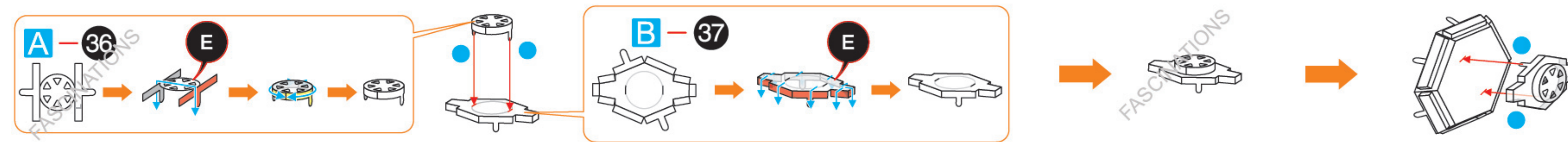
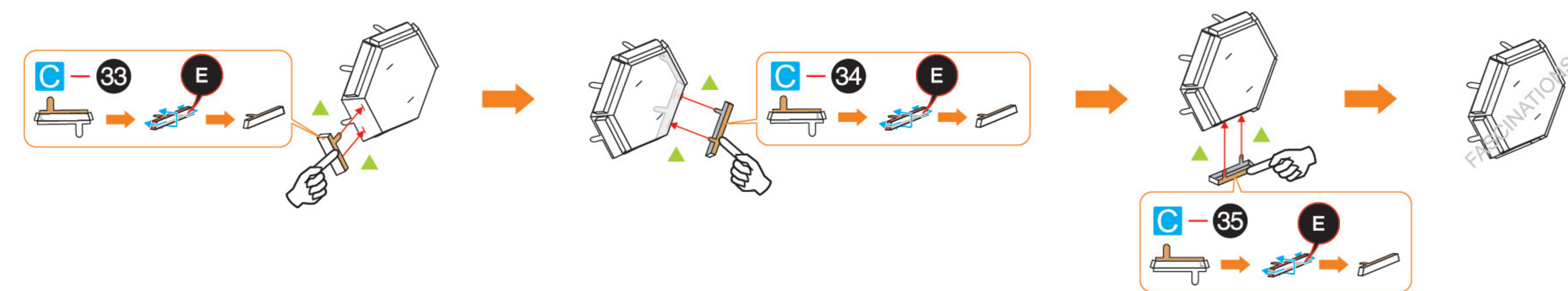
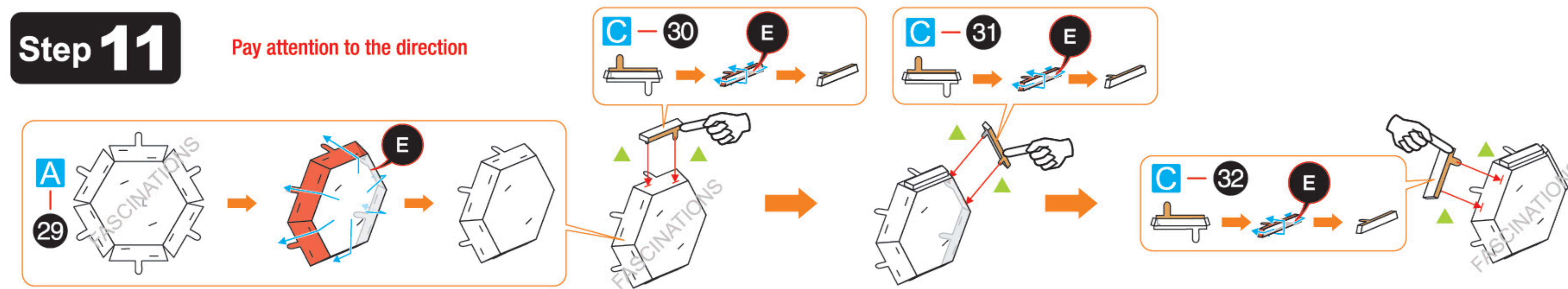


Step 10

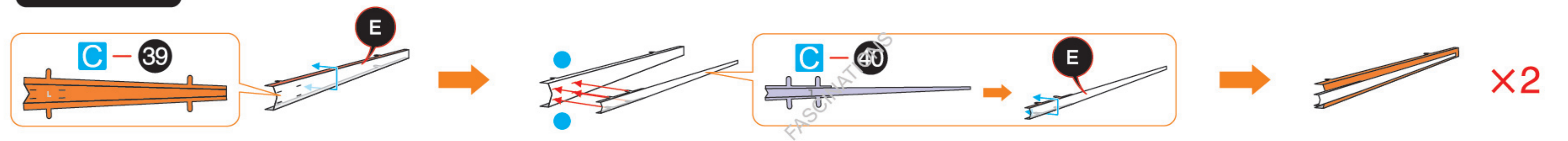


Step 11

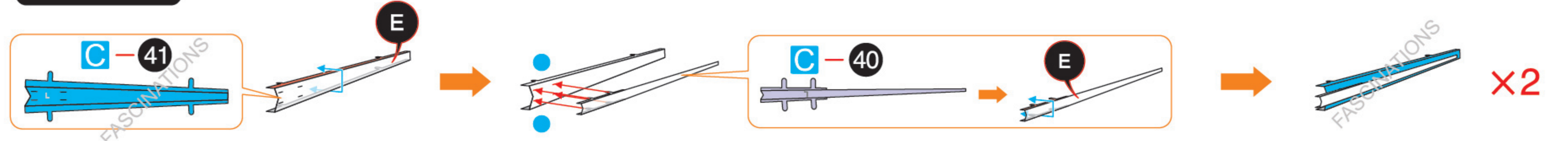
Pay attention to the direction



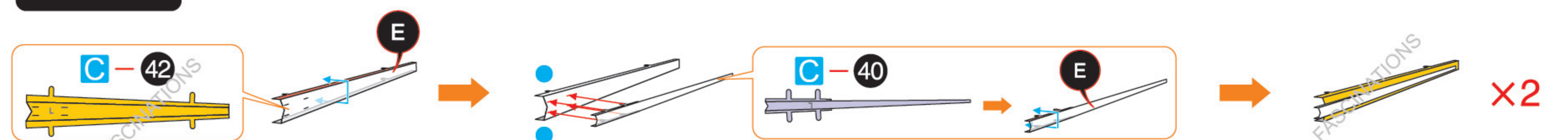
Step 12



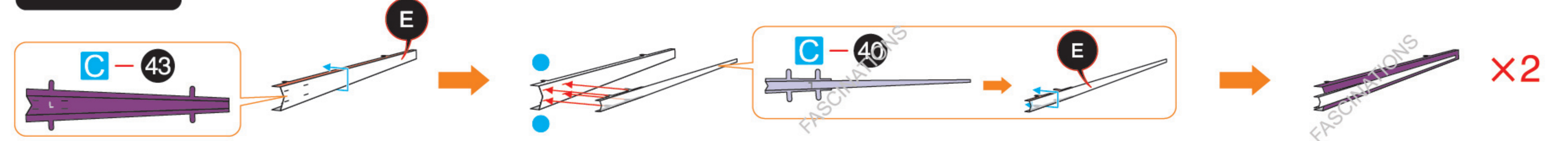
Step 13



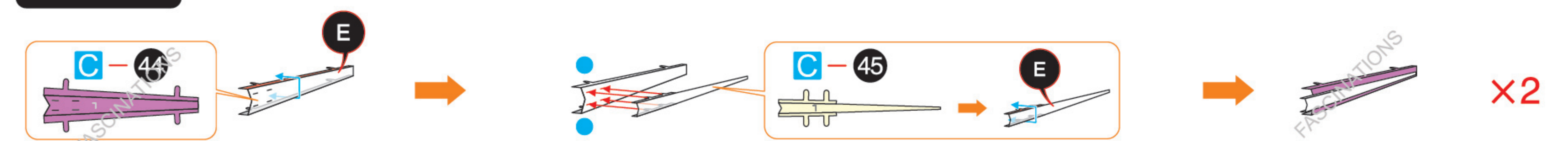
Step 14



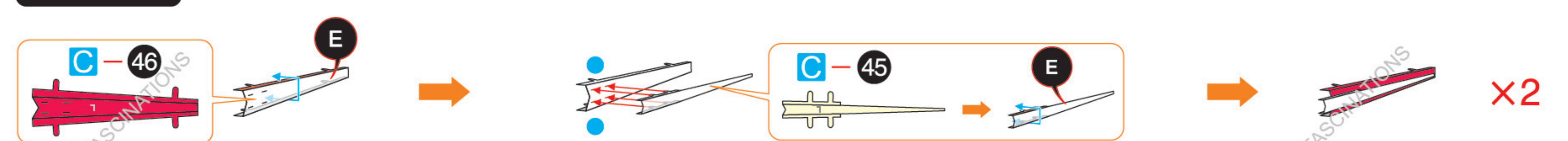
Step 15



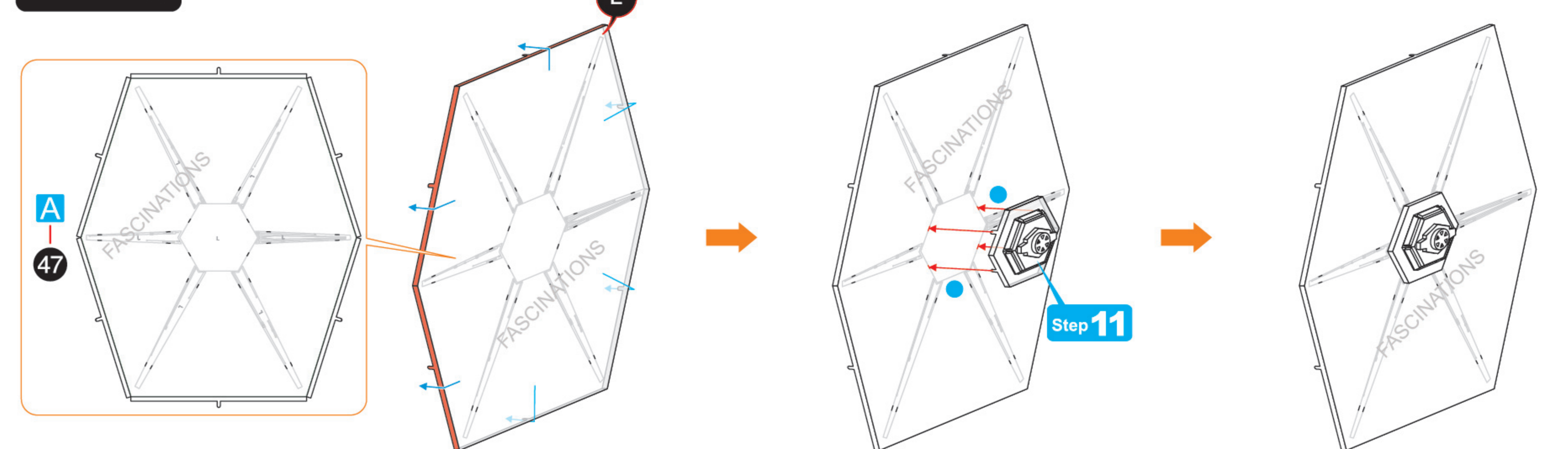
Step 16

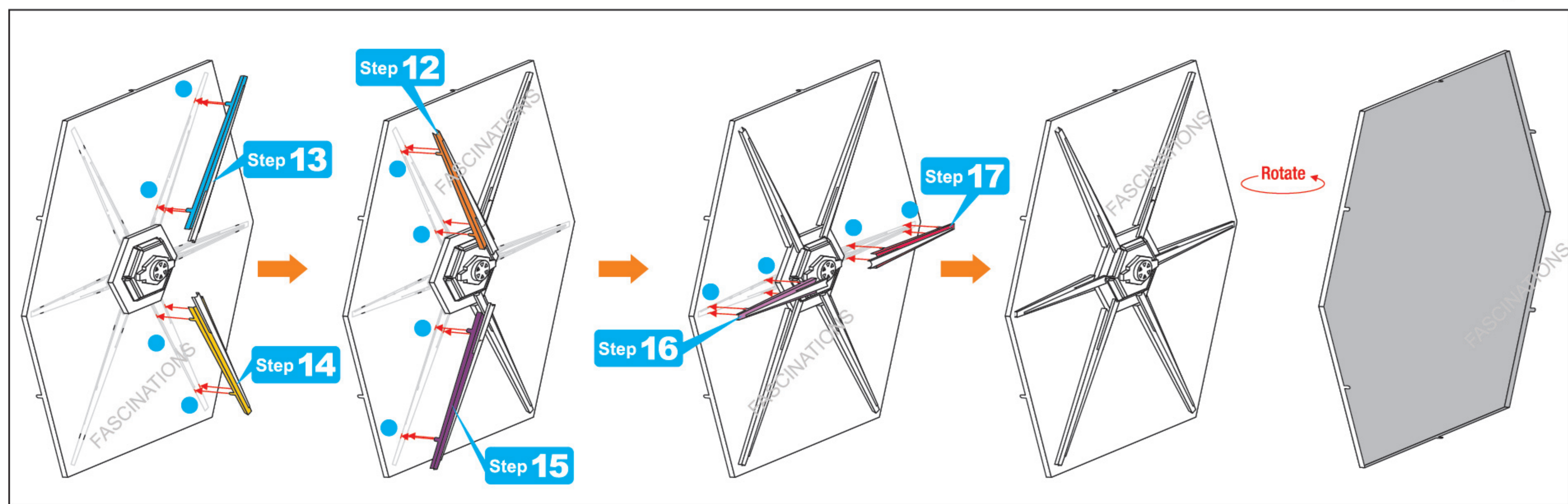


Step 17

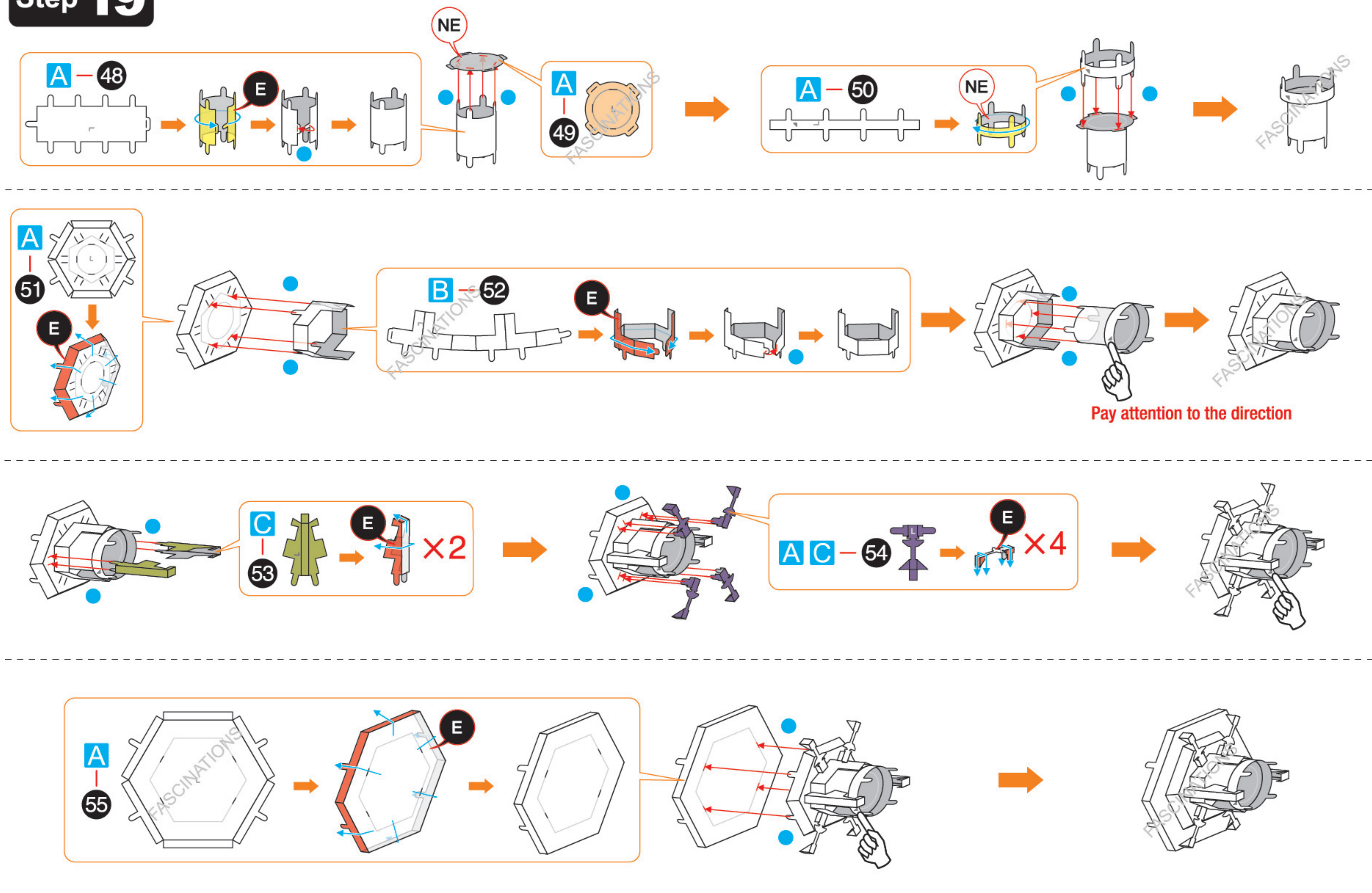


Step 18

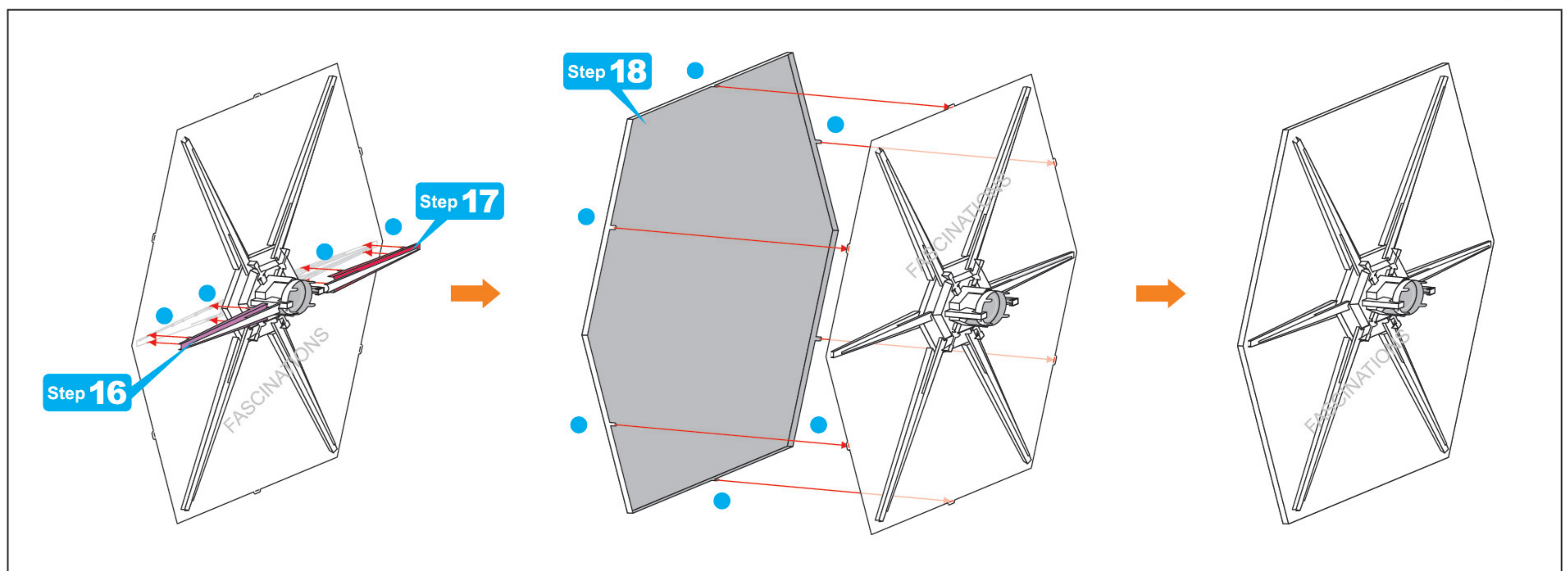
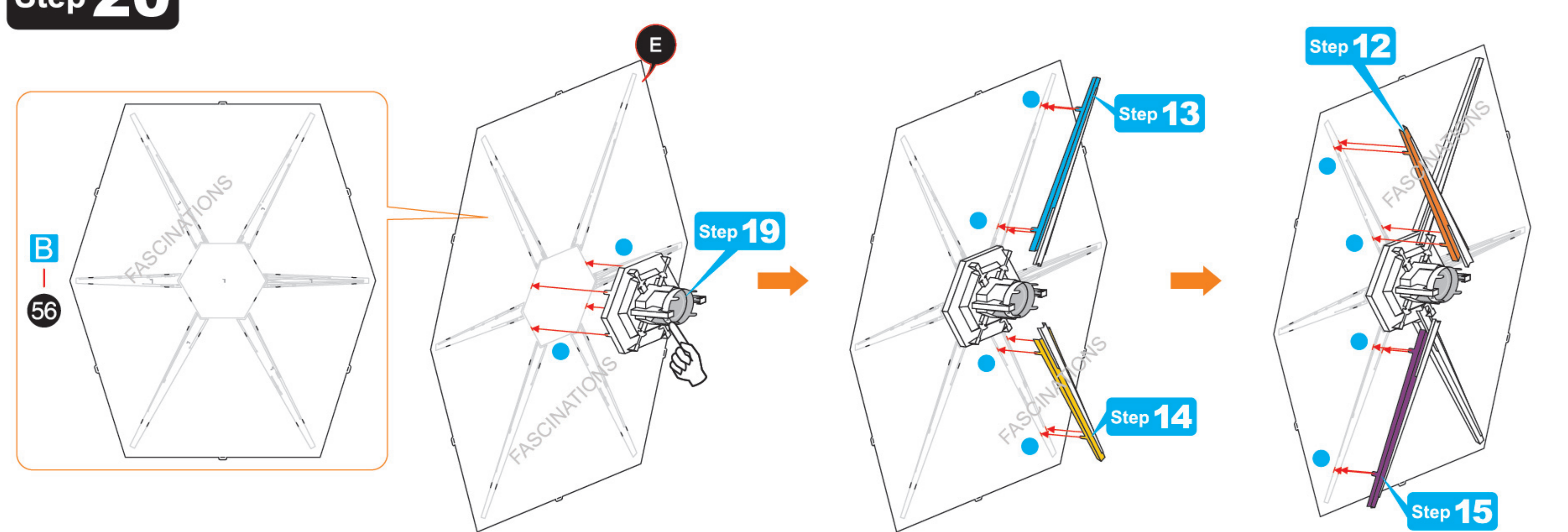




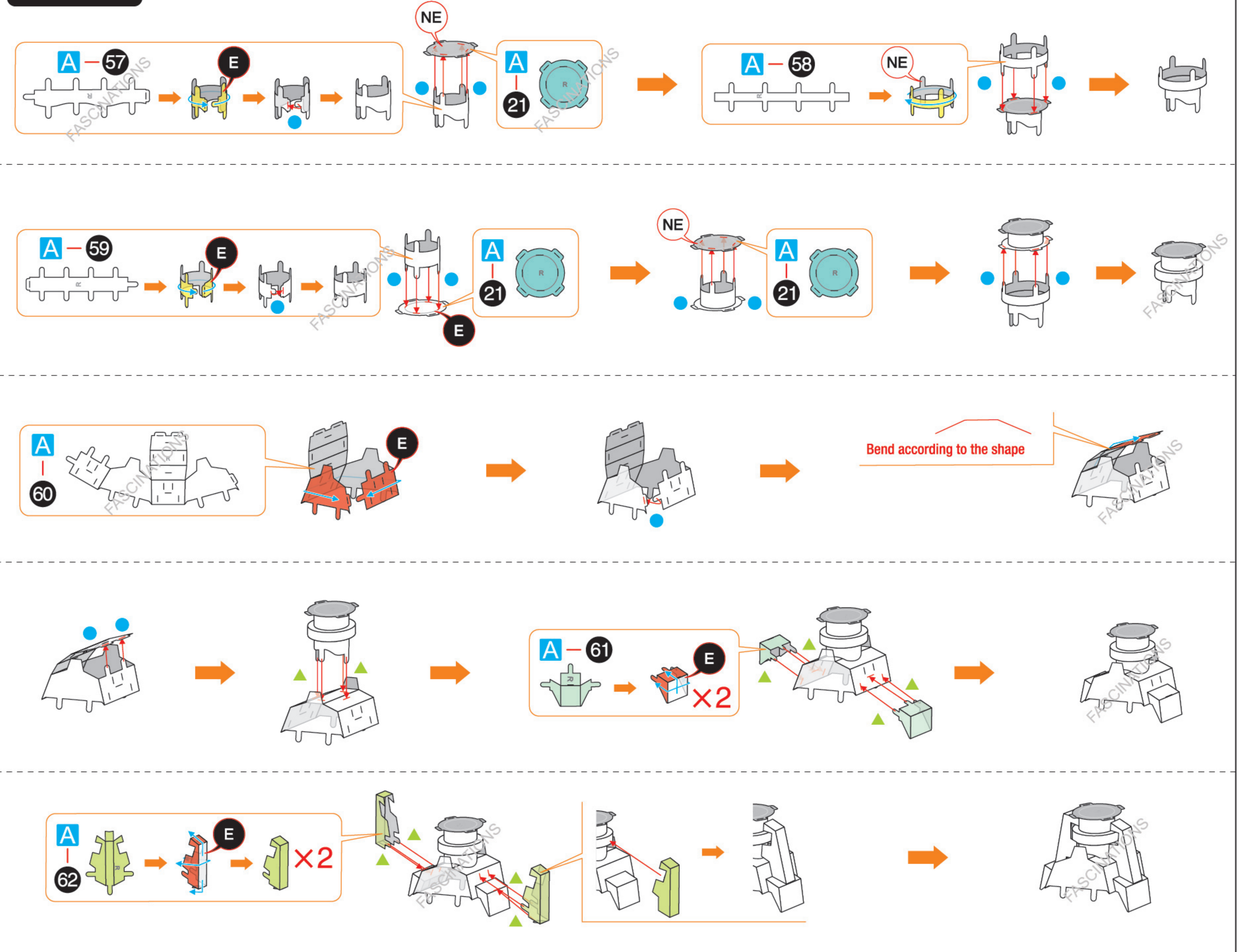
Step 19



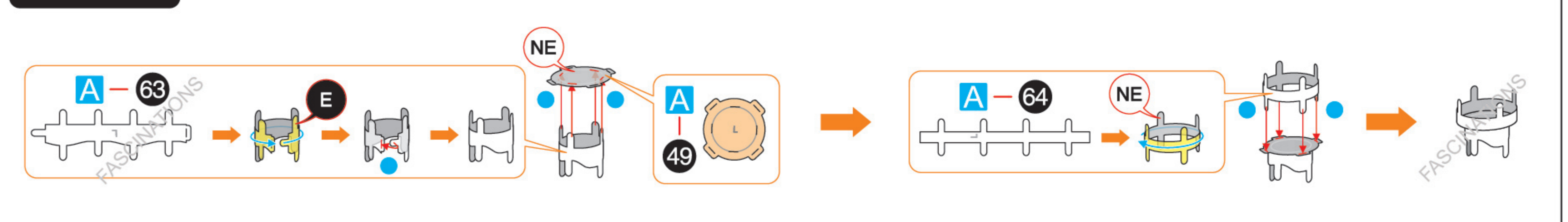
Step 20

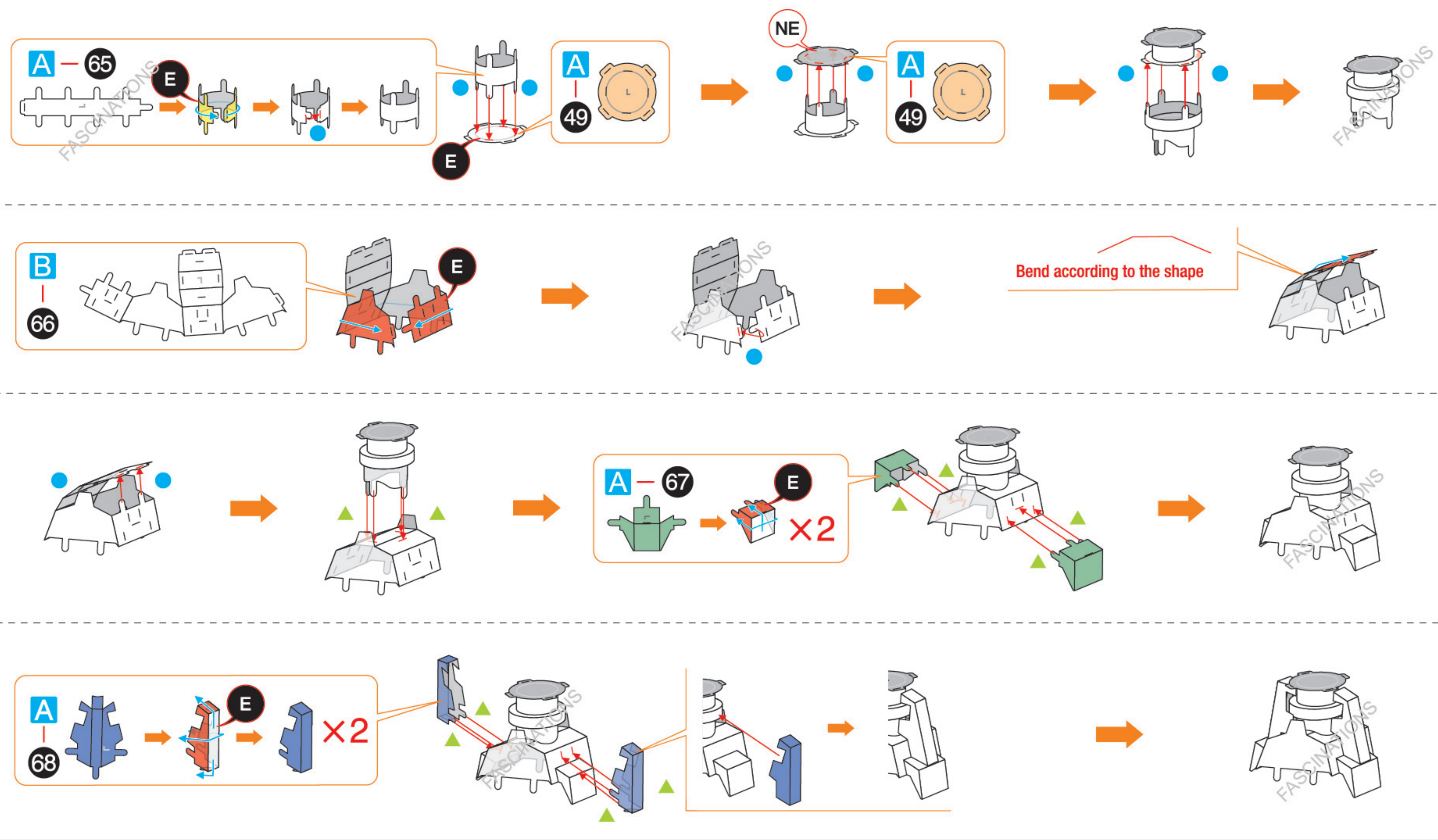


Step 21

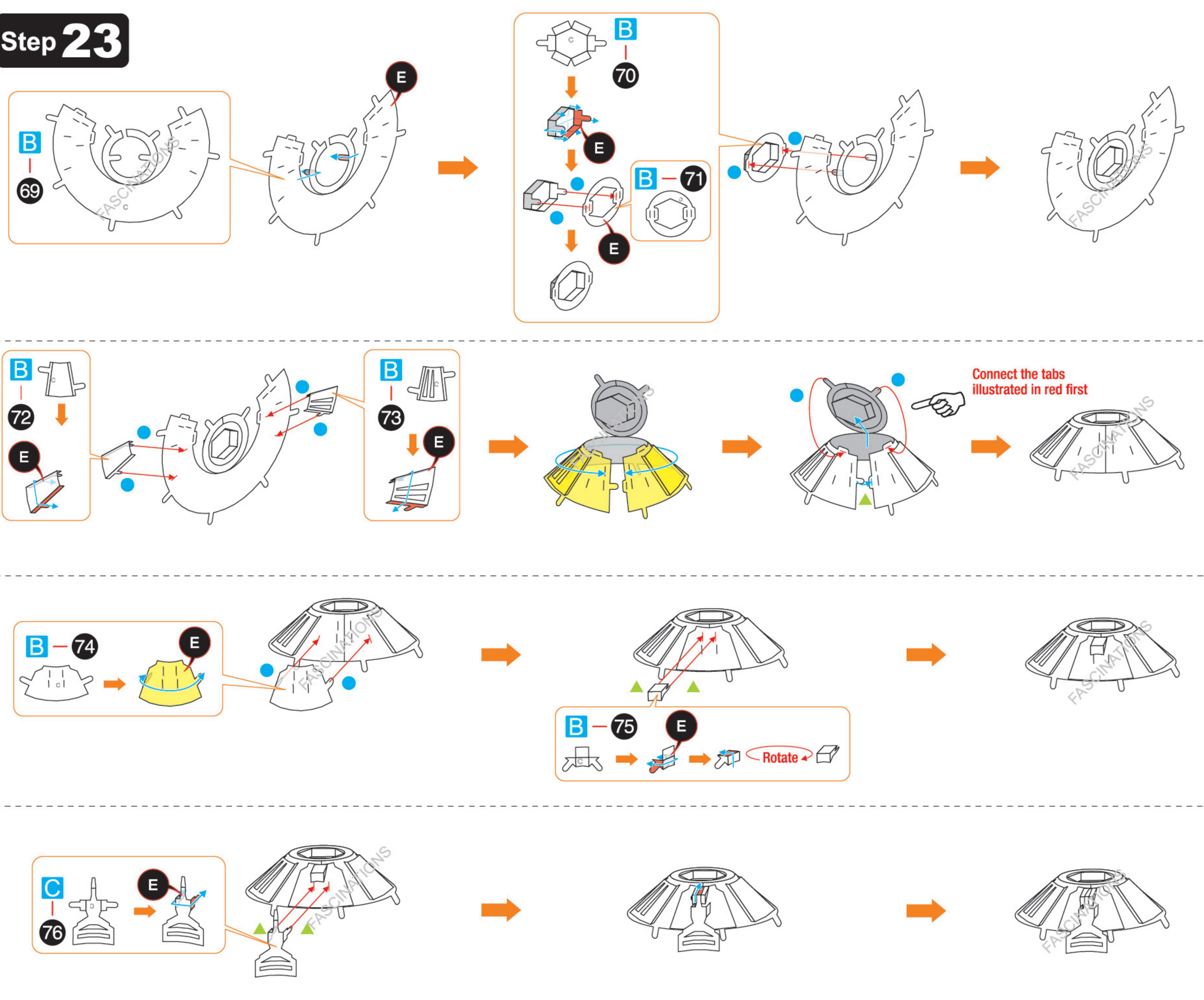


Step 22

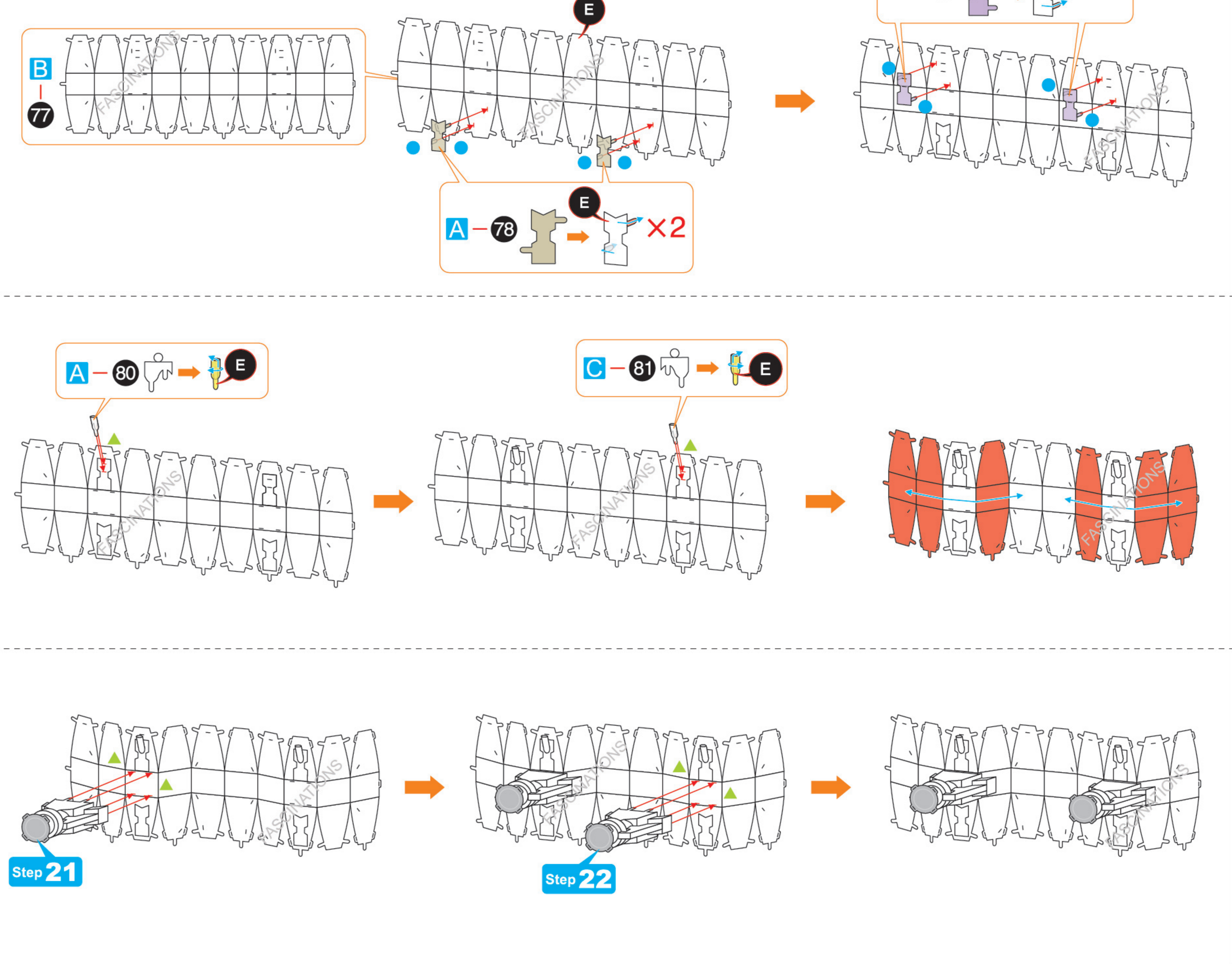




Step 23



Step 24



Step 25

