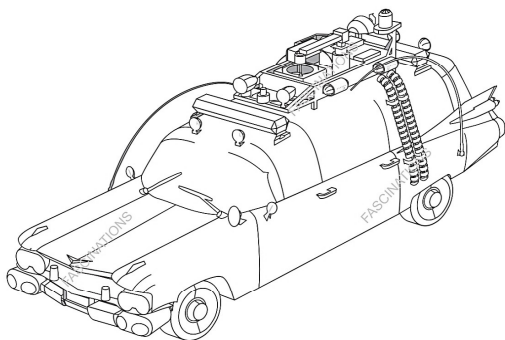


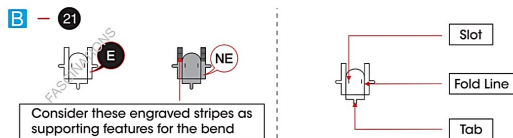


It is highly recommended that you visit www.metalearth.com/360/ICX230 to see the completed model before assembling your own

ICX230 ECTO-1



TO CREATE THE BEST CONNECTIONS



Legends:

- E** Engraved / Color side
- NE** Non - engraved / Silver side
- Attention point
- Insert tab and bend 90 degrees
- Insert tab and twist 90 degrees

Recommended tools:

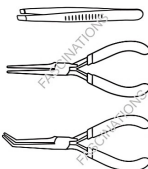
- Wire cutters: helpful for taking parts from the metal sheets.

- Tweezers or needle nose pliers: helpful for folding parts, bending and twisting tabs.

Assembly tip:

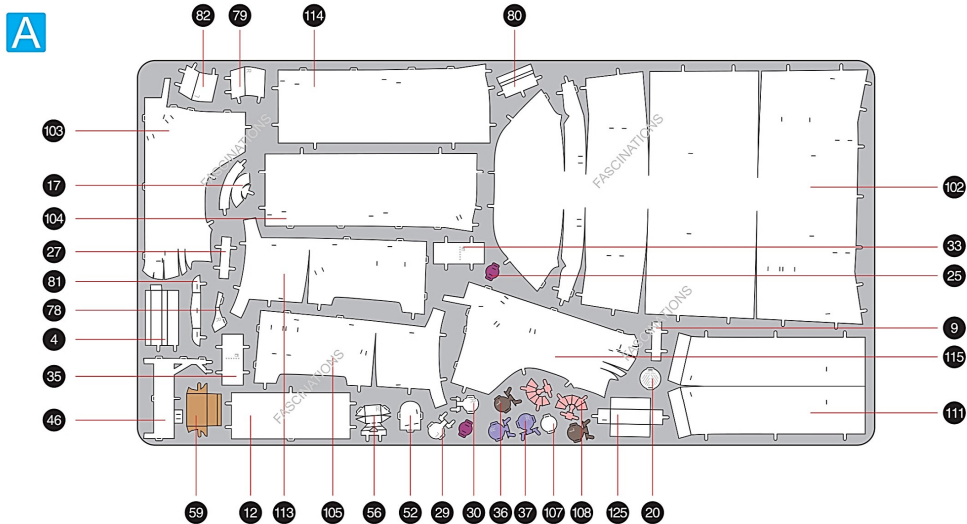
If needed, slightly twist tabs to hold parts together then untwist and bend them down for a nice finish.

- Yellow areas should be curled
- Red areas should be folded

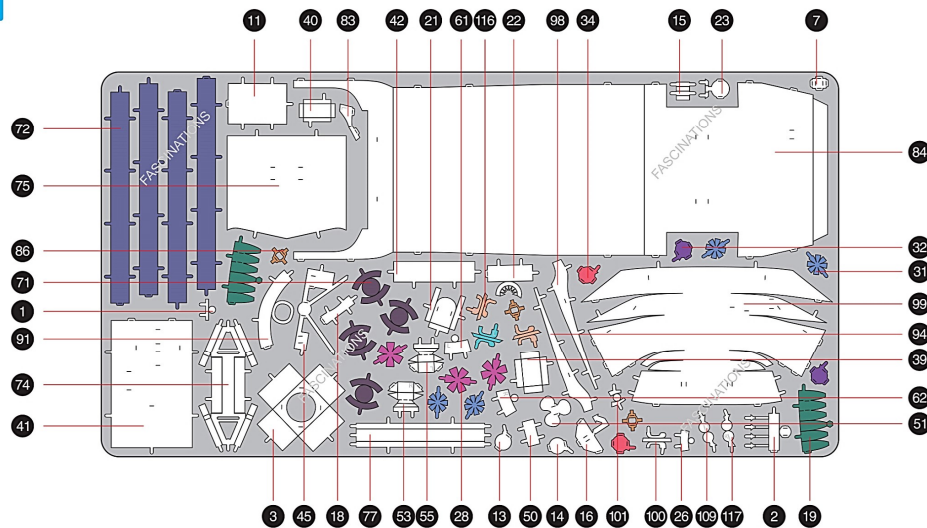


METAL SHEETS

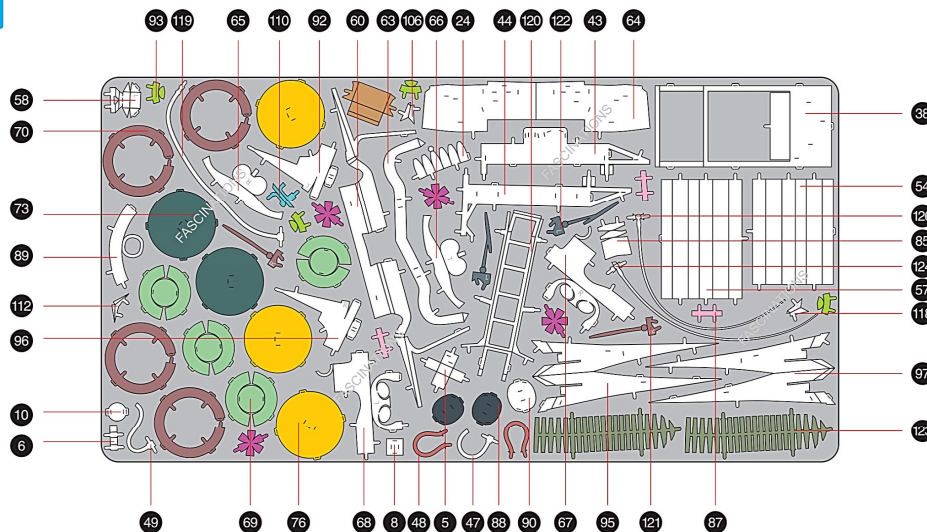
Parts with same color are duplicates



B

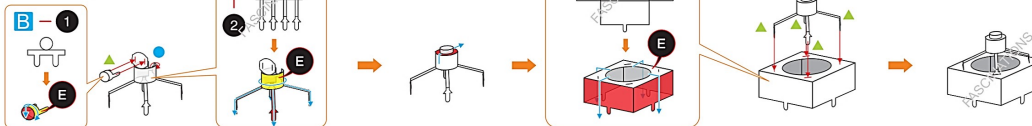


C

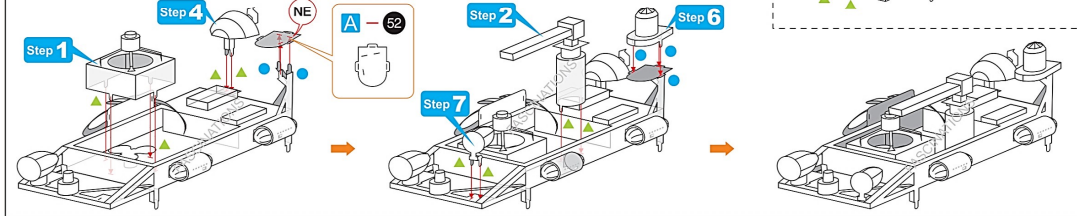
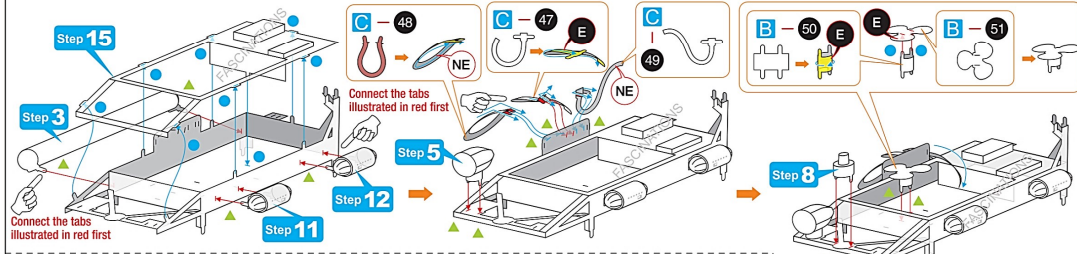
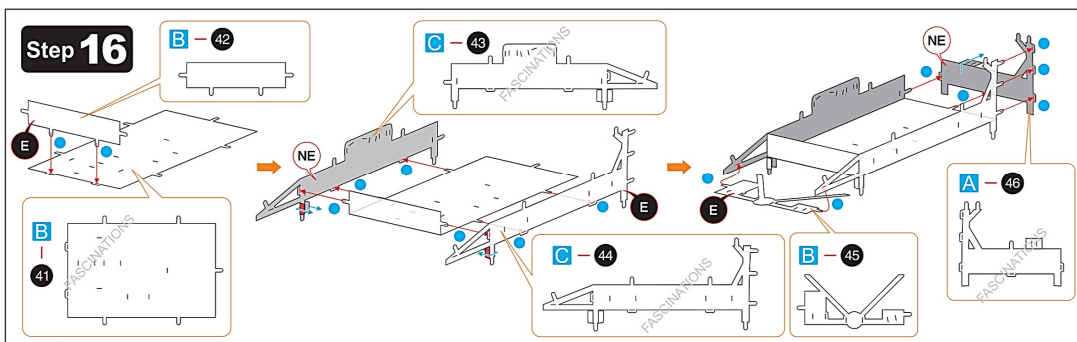
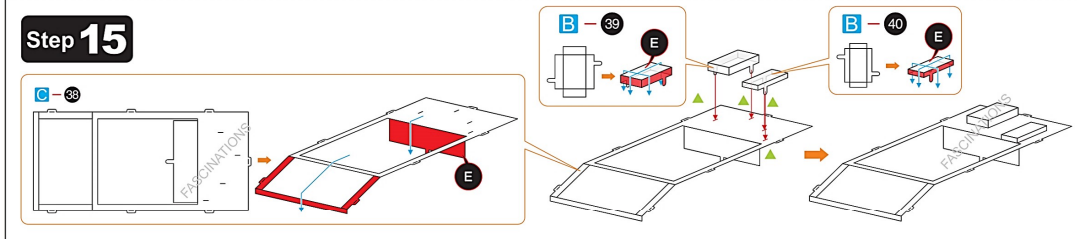
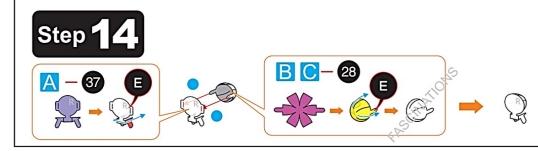
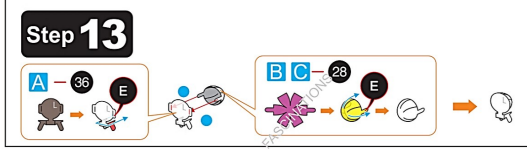
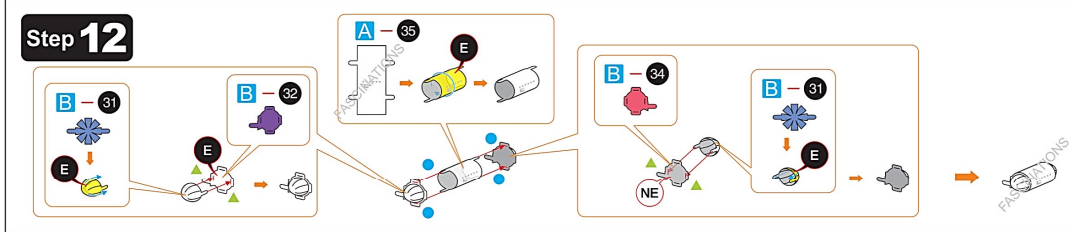
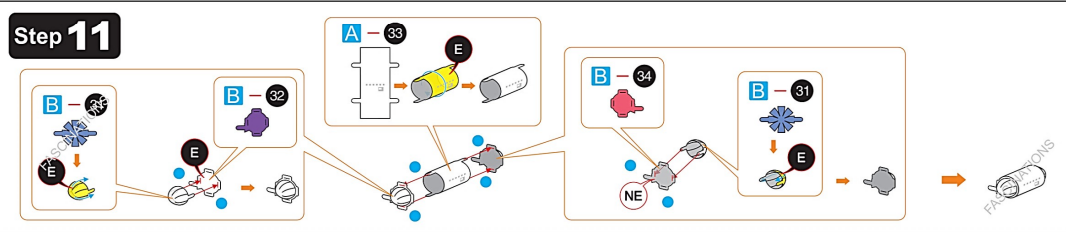
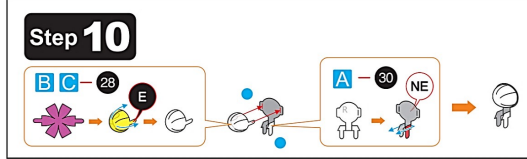
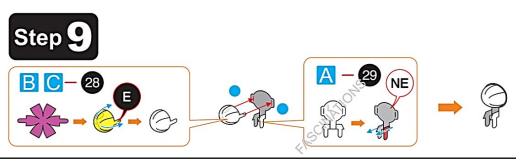
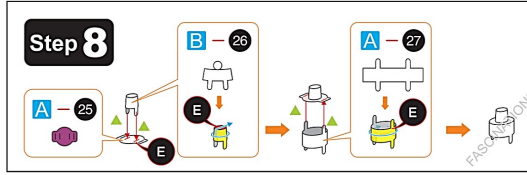
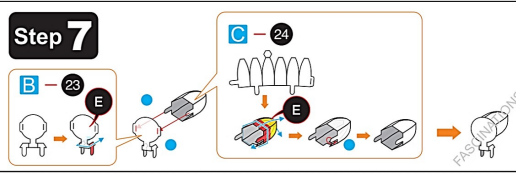
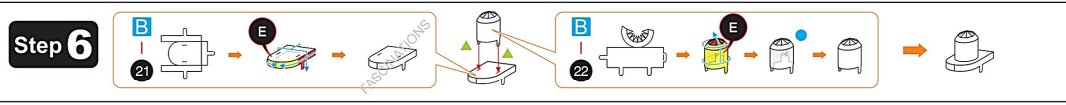
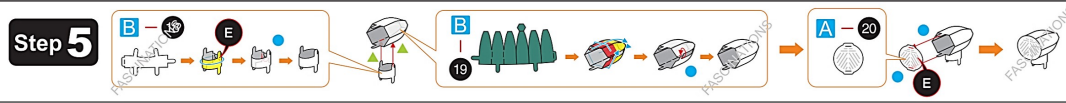
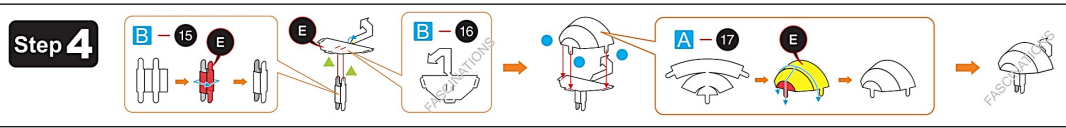
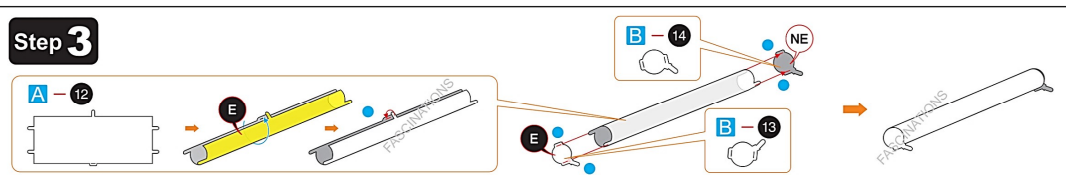
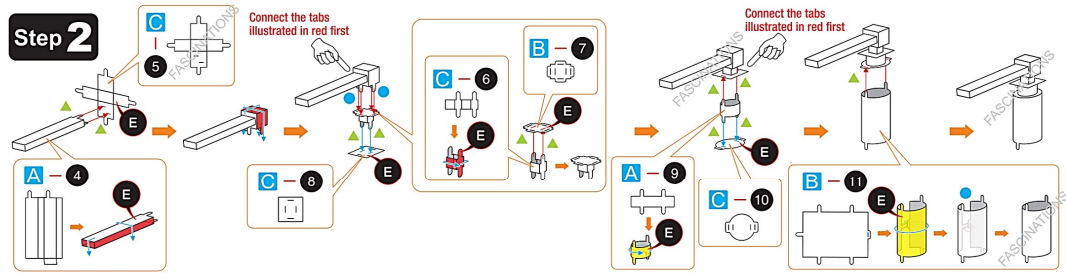


ASSEMBLY STEPS

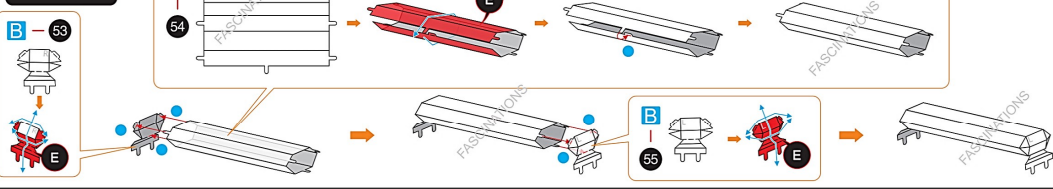
Step 1



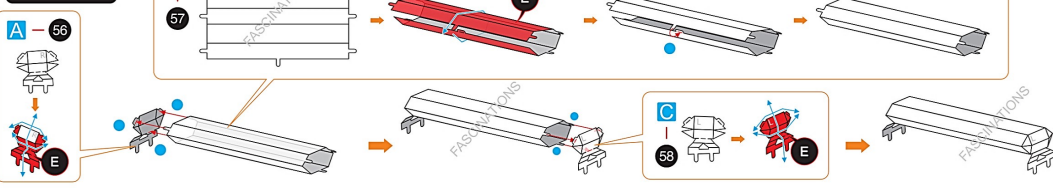
In order to avoid possible injury from sharp edges, please carefully discard the metal sheets after parts have been removed.



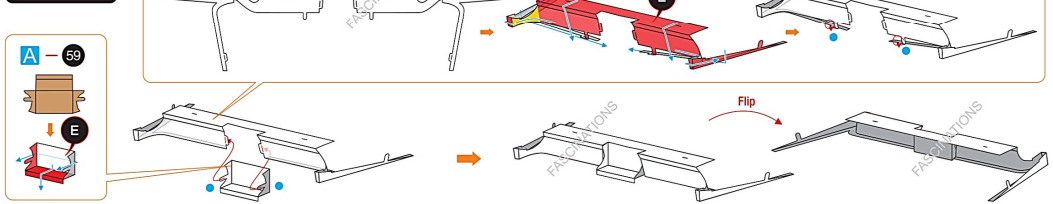
Step 17



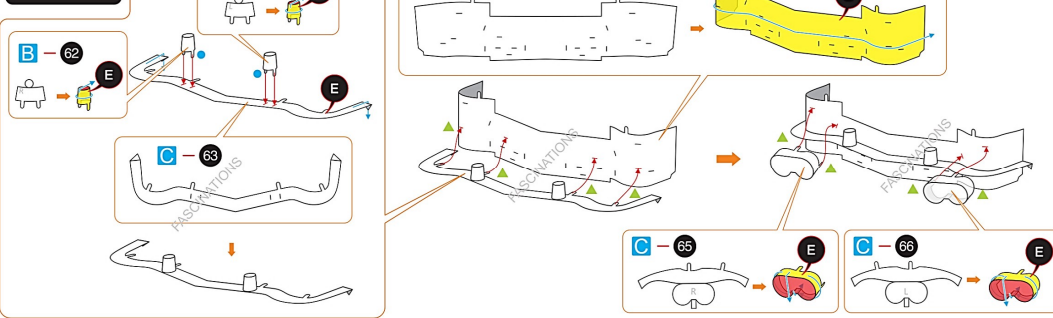
Step 18



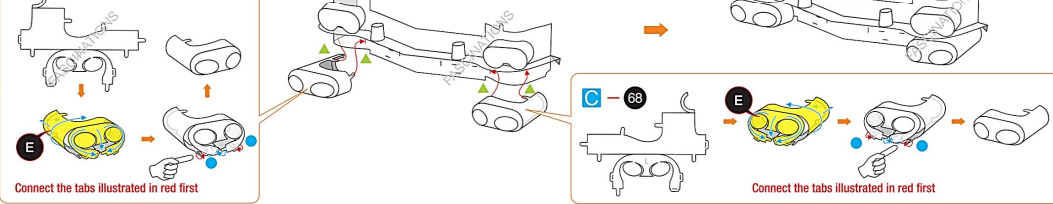
Step 19



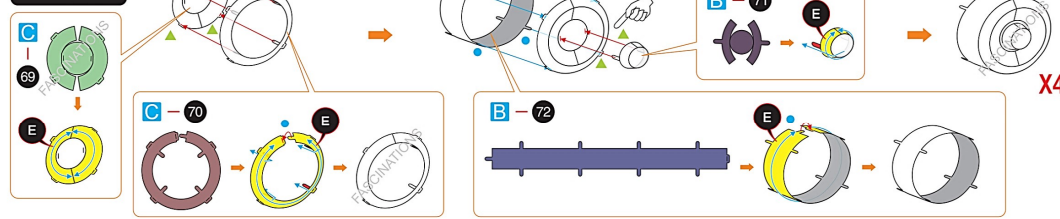
Step 20



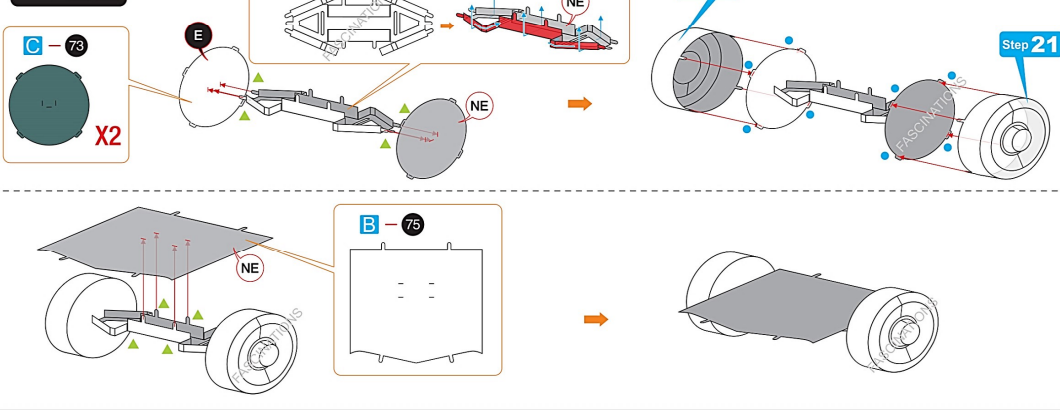
Step 20



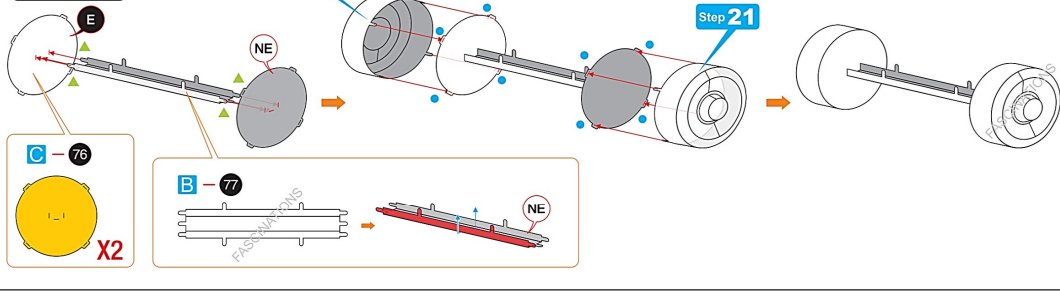
Step 21



Step 22



Step 23



Step 24

